



## Coed Celyn Drive, £250,000

- No Chain
- Master Bedroom with En-Suite
- Nearby Schools
- Great Transport Links
- Garage
- EPC Rating: C



 3
  1
  1





## About the property

For sale is this splendid end of terrace property, excellently maintained and presented in good condition. The property is situated in a highly sought-after location, with the benefit of nearby schools and excellent public transport links, making it an ideal consideration for families.

Boasting a total of three double bedrooms, this property is generous in terms of space. The master bedroom is a particular highlight, featuring an en-suite bathroom and a walk-in closet, providing a private and luxurious retreat for the homeowners. The two additional double bedrooms are also spacious, offering ample room for comfort and flexibility whether for family members or guests.

The property features a singular well-appointed kitchen, perfect for family meals and entertaining guests. Furthermore, the reception room is an inviting space, ideal for relaxing and entertaining, thereby ensuring a welcoming environment for anyone stepping into the house.

A noteworthy feature of this property is the single bathroom, a detail that adds convenience and functionality to the living space. Despite the absence of specified unique features, the property's timeless design and desirable location make it a standout offering in the current marketplace.



## Accommodation

### Entrance Hallway

### Kitchen

12' 8" x 6' 2" ( 3.86m x 1.88m )

### Living Room

16' 4" x 13' 5" ( 4.98m x 4.09m )

### Downstairs W/C

### Bedroom 2

11' 5" x 10' 2" ( 3.48m x 3.10m )

### Bedroom 3

11' 2" x 9' 5" ( 3.40m x 2.87m )

### Bathroom

### Bedroom 1

13' 5" Max x 13' 5" Max ( 4.09m Max x 4.09m Max )

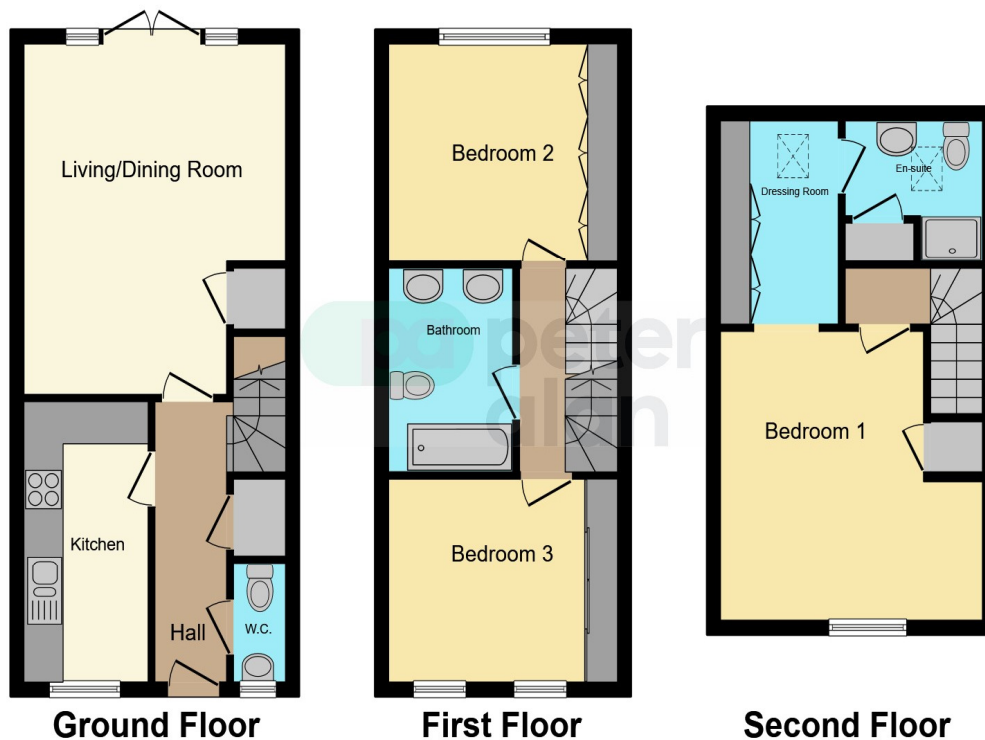
### En-Suite

### Garden

01495 231199

blackwood@peteralan.co.uk

## Floorplan



This floor plan is for illustrative purposes only. It is not drawn to scale. Any measurements, floor areas (including any total floor area), openings and orientation are approximate. No details are guaranteed, they cannot be relied upon for any purpose and they do not form part of any agreement. No liability is taken for any error, omission or misstatement. A party must rely upon its own inspection(s). Powered by [www.focalagent.com](http://www.focalagent.com)



## Important Information

Note while we endeavour to make our sales details accurate and reliable, if there is any point which is of particular interest to you, please contact the office and we will be pleased to confirm the position for you. We have not personally tested any apparatus, equipment, fixtures, fittings or services and cannot verify they are in working order or fit for their purposes. Nothing in these particulars is intended to indicate that carpets or curtains, furnishings or fittings, electrical goods (whether wired or not). Gas fires or light fittings or any other fixtures not expressly included form part of the property offered for sale. This computer generated Floorplan, if applicable, is intended as a general guide to the layout and design of the property. It is not to scale and should not be relied upon for dimensions. Tenure: We cannot confirm the tenure of the property as we have not had access to the legal documents. The buyer is advised to obtain verification from their solicitor or surveyor.

Peter Alan Limited is registered in England and Wales under company number 2073153, Registered Office is Cumbria House, 16-20 Hockliffe Street, Leighton Buzzard, Bedfordshire, LU7 1GN. VAT Registration Number is 500 2481 05. For activities relating to regulated mortgages and non-investment insurance contracts, Peter Alan Limited is an appointed representative of Connells Limited which is authorised and regulated by the Financial Conduct Authority. Connells Limited's Financial Services Register number is 302221. Most buy-to-let