



Meadow Close, £170,000

- No Chain
- Sought After Location
- Local Amenities
- Nearby Schools
- Transport Links
- Semi detached
- Garage in seperate block with parking.
- EPC Rating: D



 3  1  1



About the property

Presenting a splendid semi-detached house, available for immediate purchase. This property is in superb condition, having been meticulously maintained and well-presented. It is located in a desirable location, offering easy access to local amenities and schools, making it perfect for families.

The charming house is structured into a well-proportioned layout with ample space for comfortable living. It boasts a welcoming reception room that provides an inviting ambiance for entertaining guests or spending quality time with family. The reception room exhibits a harmonious blend of style and comfort, providing a pleasant living environment.

The property features a functional kitchen, which is the heart of the house. It comes equipped with essential amenities, providing a perfect environment for culinary exploration. This house comprises three generously-sized bedrooms, offering plenty of room for relaxation and personal space. They have been tastefully designed to promote a sense of tranquillity and comfort.

A well-maintained bathroom is part of the package, fitted with modern fixtures and a clean, fresh finish. The property's unique feature is its garden, which offers a lovely outdoor space for leisure activities or alfresco



Accommodation

Entrance Hallway

Lounge

16' 4" x 12' 6" (4.98m x 3.81m)

Kitchen

15' 7" x 9' 2" (4.75m x 2.79m)

Bathroom

Bedroom 1

13' 2" Max x 8' 7" Max (4.01m Max x 2.62m Max)

Bedroom 2

10' 1" x 9' 3" (3.07m x 2.82m)

Bedroom 3

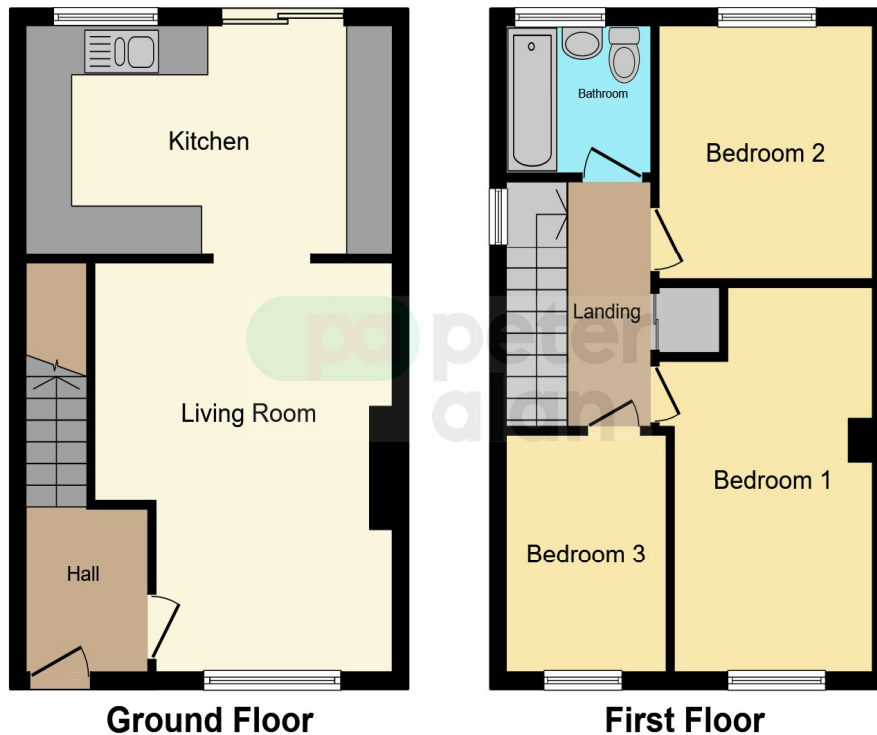
9' 10" x 6' 10" (3.00m x 2.08m)

Garden

01495 231199

blackwood@peteralan.co.uk

Floorplan



This floor plan is for illustrative purposes only. It is not drawn to scale. Any measurements, floor areas (including any total floor area), openings and orientation are approximate. No details are guaranteed, they cannot be relied upon for any purpose and they do not form part of any agreement. No liability is taken for any error, omission or misstatement. A party must rely upon its own inspection(s). Powered by www.focalagent.com



Important Information

Note while we endeavour to make our sales details accurate and reliable, if there is any point which is of particular interest to you, please contact the office and we will be pleased to confirm the position for you. We have not personally tested any apparatus, equipment, fixtures, fittings or services and cannot verify they are in working order or fit for their purposes. Nothing in these particulars is intended to indicate that carpets or curtains, furnishings or fittings, electrical goods (whether wired or not). Gas fires or light fittings or any other fixtures not expressly included form part of the property offered for sale. This computer generated Floorplan, if applicable, is intended as a general guide to the layout and design of the property. It is not to scale and should not be relied upon for dimensions. Tenure: We cannot confirm the tenure of the property as we have not had access to the legal documents. The buyer is advised to obtain verification from their solicitor or surveyor.

Peter Alan Limited is registered in England and Wales under company number 2073153, Registered Office is Cumbria House, 16-20 Hockliffe Street, Leighton Buzzard, Bedfordshire, LU7 1GN. VAT Registration Number is 500 2481 05. For activities relating to regulated mortgages and non-investment insurance contracts, Peter Alan Limited is an appointed representative of Connells Limited which is authorised and regulated by the Financial Conduct Authority. Connells Limited's Financial Services Register number is 302221. Most buy-to-let