



Cwm Braenar, offers over £325,000

- Council Tax E
- Fantastic Family home
- Sought after location
- Off Road Parking
- Integral Garage
- Close to well regarded schools
- EPC Rating: C



 4  2  1



About the property

Presenting an immaculate, detached property currently available for purchase. This beautifully presented home comprises four spacious bedrooms and two well-appointed bathrooms. An elegant reception room offers an ideal space for relaxation and entertainment, while the modern kitchen is equipped to cater to all your culinary needs.

This property is not just about the interior spaces, as it boasts unique features such as a garage and a parking space, adding convenience to your daily lifestyle. The condition of the property is impeccable and has been maintained to a high standard, ready for immediate occupation with no need for any refurbishment.

The location is indeed a highlight. Nested within a quiet and peaceful neighborhood, the property enjoys strong community ties. The proximity to public transport links ensures easy commuting to and from the city center, while the local amenities - shops, schools, and health services - are all within easy reach. Adding to the appeal of the location are the green spaces in the vicinity, perfect for weekend relaxation and outdoor activities, making this an ideal residence for those who appreciate tranquility and community spirit.



Accommodation

Lounge/Dining Room

25' 6" x 10' 9" (7.77m x 3.28m)

Kitchen

14' 5" x 11' 2" (4.39m x 3.40m)

Utility Room

Wc

Garage

Master Bedroom

12' 2" x 10' 9" (3.71m x 3.28m)

En-Suite Shower Room

Bedroom Two

12' 8" x 9' 4" (3.86m x 2.84m)

Bedroom Three

12' 10" x 9' (3.91m x 2.74m)

Bedroom Four

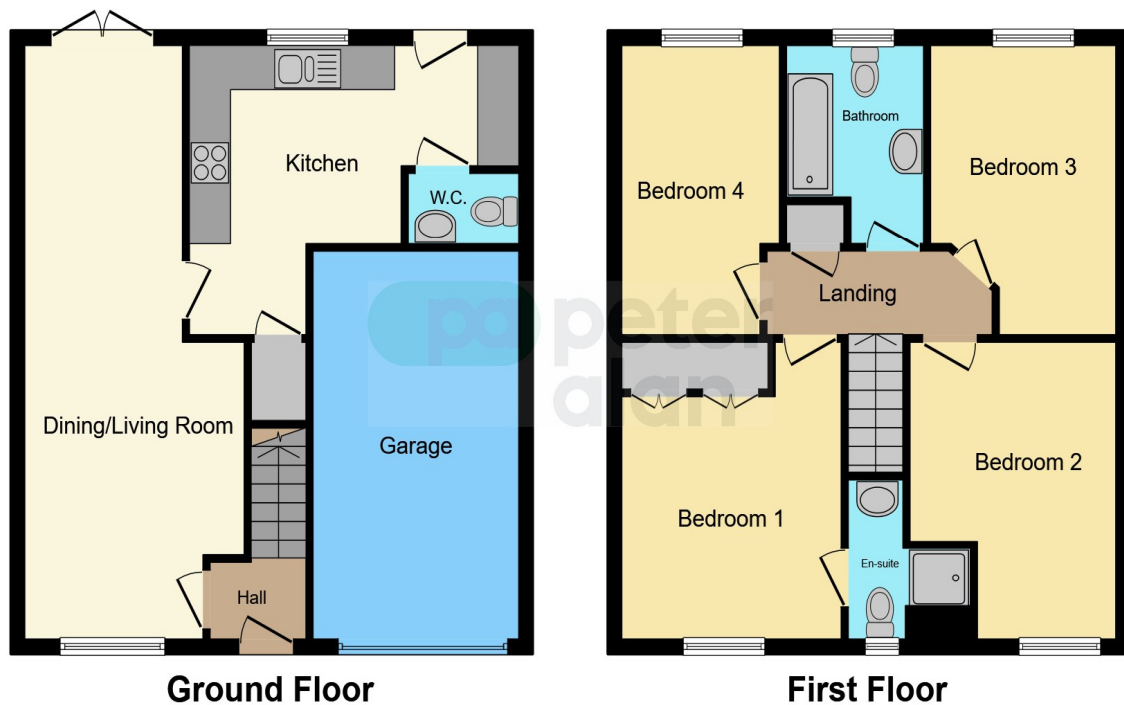
12' 4" x 7' 7" (3.76m x 2.31m)

Family Bathroom

01495 231199

blackwood@peteralan.co.uk

Floorplan



This floor plan is for illustrative purposes only. It is not drawn to scale. Any measurements, floor areas (including any total floor area), openings and orientation are approximate. No details are guaranteed, they cannot be relied upon for any purpose and they do not form part of any agreement. No liability is taken for any error, omission or misstatement. A party must rely upon its own inspection(s). Powered by www.focalagent.com

Important Information

Note while we endeavour to make our sales details accurate and reliable, if there is any point which is of particular interest to you, please contact the office and we will be pleased to confirm the position for you. We have not personally tested any apparatus, equipment, fixtures, fittings or services and cannot verify they are in working order or fit for their purposes. Nothing in these particulars is intended to indicate that carpets or curtains, furnishings or fittings, electrical goods (whether wired or not). Gas fires or light fittings or any other fixtures not expressly included form part of the property offered for sale. This computer generated Floorplan, if applicable, is intended as a general guide to the layout and design of the property. It is not to scale and should not be relied upon for dimensions. Tenure: We cannot confirm the tenure of the property as we have not had access to the legal documents. The buyer is advised to obtain verification from their solicitor or surveyor.

Peter Alan Limited is registered in England and Wales under company number 2073153, Registered Office is Cumbria House, 16-20 Hockliffe Street, Leighton Buzzard, Bedfordshire, LU7 1GN. VAT Registration Number is 500 2481 05. For activities relating to regulated mortgages and non-investment insurance contracts, Peter Alan Limited is an appointed representative of Connells Limited which is authorised and regulated by the Financial Conduct Authority. Connells Limited's Financial Services Register number is 302221. Most buy-to-let

pa peter
alan