



Upland Road offers in excess of £180,000

- COUNCIL TAX BAND B
- Three Bedrooms
- Semi Detached
- Close to amenities
- Great location
- EPC Rating: D



 3  1  1



About the property

Discover the charm of Upland Road in Springfield, where this semi-detached residence welcomes you with three bedrooms. Enjoy the convenience of a great location, placing you close to a variety of amenities for effortless daily living. Upland Road offers a simple yet inviting home, where the appeal of suburban living meets the ease of proximity to essential services. Welcome to a cozy haven in the heart of Springfield.

Viewings highly recommended



Accommodation

Front

Gate to steps down to path that leads to entrance door. Front and side gardens laid to lawn.

Entrance Hall

UPVC front door, Laminate flooring, Access to all rooms, Staircase leading to first floor

Living Room

13' 7" x 11' 11" (4.14m x 3.63m)
Laminate flooring, Plastered walls, Double glazed window to front aspect

Dining Room

11' 11" x 11' (3.63m x 3.35m)
Laminate flooring, Plastered walls, Double glazed window to front aspect

Kitchen

12' 1" x 6' 11" (3.68m x 2.11m)
Base and wall kitchen units, Double glazed window to rear aspect

Bathroom

White bathroom suite comprising of a panelled bath with electric shower over, low level WC, pedestal wash hand basing, tile effect flooring.

Bedroom One

12' 1" x 11' (3.68m x 3.35m)
Plastered walls, Double glazed windows to front aspect

Bedroom Two

13' 10" x 11' 1" (4.22m x 3.38m)
Plastered walls, Double glazed window to front aspect

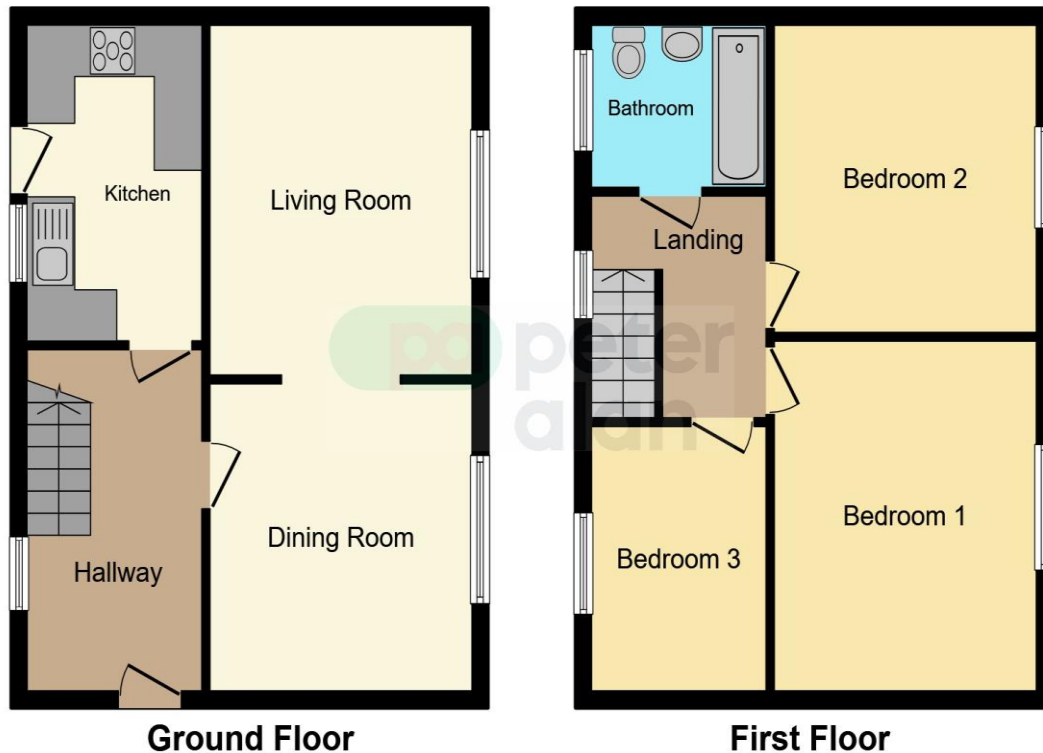
Bedroom Three

10' 7" x 7' (3.23m x 2.13m)
Plastered walls, Double glazed window to rear aspect

Rear

Double glazed front window, tiled roof, etc.

Floorplan



This floorplan is for illustrative purposes only and is not drawn to scale. Measurements, floor-areas, openings and orientations are approximate. They should not be relied upon for any purpose and do not form any part of an agreement. No liability is taken for any error or mis-statement. All parties must rely on their own inspections.

Important Information

Note while we endeavour to make our sales details accurate and reliable, if there is any point which is of particular interest to you, please contact the office and we will be pleased to confirm the position for you. We have not personally tested any apparatus, equipment, fixtures, fittings or services and cannot verify they are in working order or fit for their purposes. Nothing in these particulars is intended to indicate that carpets or curtains, furnishings or fittings, electrical goods (whether wired or not), Gas fires or light fittings or any other fixtures not expressly included form part of the property offered for sale. This computer generated Floorplan, if applicable, is intended as a general guide to the layout and design of the property. It is not to scale and should not be relied upon for dimensions. Tenure: We cannot confirm the tenure of the property as we have not had access to the legal documents. The buyer is advised to obtain verification from their solicitor or surveyor.

Peter Alan Limited is registered in England and Wales under company number 2073153, Registered Office is Cumbria House, 16-20 Hockliffe Street, Leighton Buzzard, Bedfordshire, LU7 1GN. VAT Registration Number is 500 2481 05. For activities relating to regulated mortgages and non-investment insurance contracts, Peter Alan Limited is an appointed representative of Connells Limited which is authorised and regulated by the Financial Conduct Authority. Connells Limited's Financial Services Register number is 302221. Most buy-to-let