



Coigne Terrace, £180,000

- 3 DOUBLE BEDROOMS
- RECENTLY RE-NEW KITCHEN & BATHROOM
- MODERN FITTINGS THROUGHOUT
- Council Tax Band - B
- CLOSE TO SHOPS, SCHOOLS & TRAIN STATION
- EPC Rating: D



 3  1  1



About the property

Close to local amenities; Barry Docks train station and bus routes, town centre shopping facilities, supermarkets, parks, beaches, popular school catchment, easy access to link roads leading to M4 corridor.

Accommodation

Porch

Hallway

Living/ Dining Room

26' 6" max x 11' 4" max (8.08m max x 3.45m max)

Open plan.

Kitchen

11' 9" max x 9' 6" (3.58m max x 2.90m)

Utility Area

Cloak Room

Bathroom



Landing

Bedroom One

12' 11" max x 10' 2" (3.94m max x 3.10m)

Bedroom Two

12' 5" max x 10' max (3.78m max x 3.05m max)

Bedroom Three

10' 4" max x 9' 2" max (3.15m max x 2.79m max)

Outside

To The Front

On street parking.

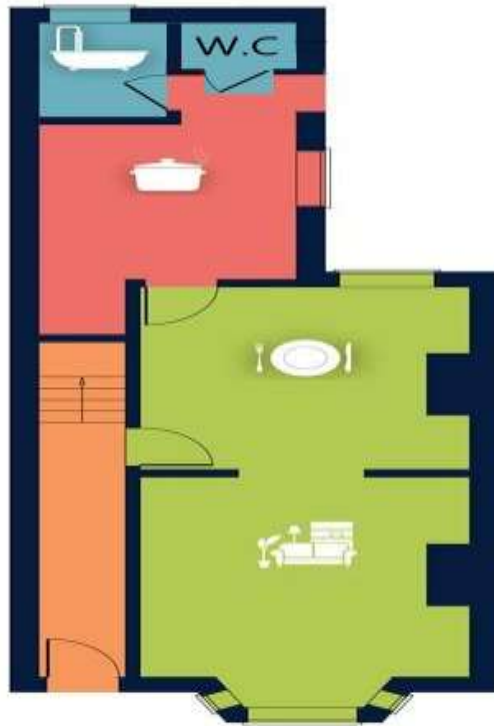
To The Rear

Enclosed rear garden.

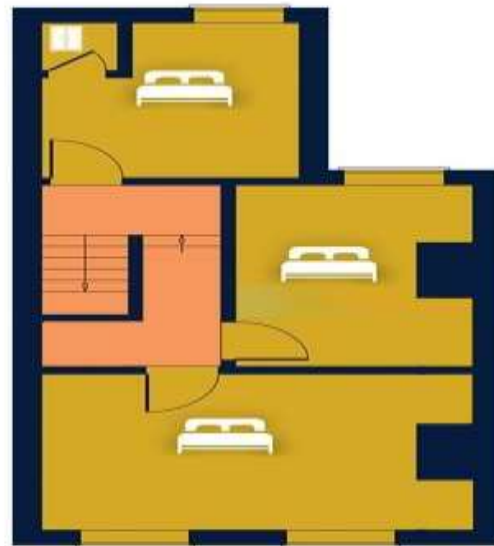
01446 733224

barry@peteralan.co.uk

Floorplan



GROUND FLOOR



FIRST FLOOR

Important Information

Note while we endeavour to make our sales details accurate and reliable, if there is any point which is of particular interest to you, please contact the office and we will be pleased to confirm the position for you. We have not personally tested any apparatus, equipment, fixtures, fittings or services and cannot verify they are in working order or fit for their purposes. Nothing in these particulars is intended to indicate that carpets or curtains, furnishings or fittings, electrical goods (whether wired or not). Gas fires or light fittings or any other fixtures not expressly included form part of the property offered for sale. This computer generated Floorplan, if applicable, is intended as a general guide to the layout and design of the property. It is not to scale and should not be relied upon for dimensions. Tenure: We cannot confirm the tenure of the property as we have not had access to the legal documents. The buyer is advised to obtain verification from their solicitor or surveyor.

Peter Alan Limited is registered in England and Wales under company number 2073153, Registered Office is Cumbria House, 16-20 Hockliffe Street, Leighton Buzzard, Bedfordshire, LU7 1GN. VAT Registration Number is 500 2481 05. For activities relating to regulated mortgages and non-investment insurance contracts, Peter Alan Limited is an appointed representative of Connells Limited which is authorised and regulated by the Financial Conduct Authority. Connells Limited's Financial Services Register number is 302221. Most buy-to-let