



 5  3  3

Clos Y Fulfran, Barry

offers in excess of £700,000

 black

01446 733224
barry@peteralan.co.uk



About the property

EXCLUSIVE AREA - RARE TO MARKET - CLOSE TO THE KNAP, BARRY ISLAND BEACHES, JACKSONS BAY.

DIRECT SEA VIEWS - Close to local amenities; The Goodsheds development, Barry Island, parks, shops, supermarkets, popular school catchment, train station, bus routes, easy access to link roads leading to M4 corridor.

Call 01446 733224

Accommodation

Cloakroom

W.C., wash hand basin, radiator, window to rear.

Lounge

13' 8" max x 9' 9" max (4.17m max x 2.97m max)
French doors to front terrace, carpet, power points, radiator, window to side.

Playroom

15' 1" x 15' 1" (4.60m x 4.60m)
wood floor, power points, radiator, windows to side, French doors to rear garden

Reception Room

17' 4" max x 16' 3" max (5.28m max x 4.95m max)
(Double garage conversion) under floor heating, tiled floor, power points, radiator, window to front and rear.

Kitchen

15' 2" x 10' 3" (4.62m x 3.12m)

Utility Room

7' 11" x 4' 1" (2.41m x 1.24m)
fitted cupboard, sink, drain, mixer tap, usb, power points, boiler, tiled floor.

Landing

carpet, power points, radiator, window to front, stairs to 2nd floor.

Bedroom 2

13' max x 11' 11" max (3.96m max x 3.63m max)





fitted wardrobe, carpet, power points, radiator, window to front and side.

En Suite

w.c , wash hand basin, double shower, tile inset lighting

Bedroom 3

15' 7" max x 12' 6" max (4.75m max x 3.81m max)
fitted wardrobes x 2 , carpet power points, radiator, 2 x window to rear

Bedroom 5

8' 8" x 7' 2" (2.64m x 2.18m)
carpet, power points, radiator, window to rear.

Bathroom

w.c , wash hand basin, bath with overhead shower, tiled areas, inset storage, radiator

Landing

storage, carpet, power points

Bedroom1

16' 4" max x 13' 1" max (4.98m max x 3.99m max)



Carpet, power points, radiator, window to front.

Dressing Room

10' 4" x 6' 1" (3.15m x 1.85m)
fitted wardrobes, carpet, power points, window to side.

En-Suite

roll top bath, double shower, w.c , wash hand basin,
tiled areas, radiator, inset lighting, window to rear

Bedroom 4

14' 6" max x 9' 3" (4.42m max x 2.82m)
carpet, power points, radiator, window to front and rear.

Front Garden

patio, outside tap

Rear Garden

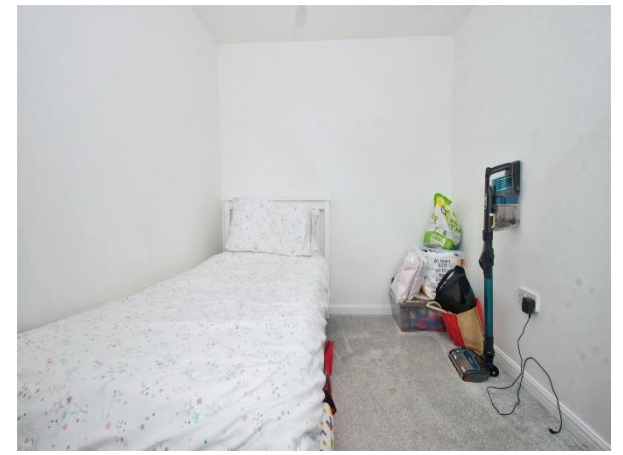
side access

Parking

double drive









01446 733224

barry@peteralan.co.uk



This floor plan is for illustrative purposes only. It is not drawn to scale. Any measurements, floor areas (including any total floor area), openings and orientation are approximate. No details are guaranteed, they cannot be relied upon for any purpose and they do not form part of any agreement. No liability is taken for any error, omission or misstatement. A party must rely upon its own inspection(s). Powered by www.focalagent.com

Important Information

Note while we endeavour to make our sales details accurate and reliable, if there is any point which is of particular interest to you, please contact the office and we will be pleased to confirm the position for you. We have not personally tested any apparatus, equipment, fixtures, fittings or services and cannot verify they are in working order or fit for their purposes. Nothing in these particulars is intended to indicate that carpets or curtains, furnishings or fittings, electrical goods (whether wired or not), Gas fires or light fittings or any other fixtures not expressly included form part of the property offered for sale. This computer generated Floorplan, if applicable, is intended as a general guide to the layout and design of the property. It is not to scale and should not be relied upon for dimensions. Tenure: We cannot confirm the tenure of the property as we have not had access to the legal documents. The buyer is advised to obtain verification from their solicitor or surveyor.

Peter Alan Limited is registered in England and Wales under company number 2073153, Registered Office is Cumbria House, 16-20 Hockliffe Street, Leighton Buzzard, Bedfordshire, LU7 1GN. VAT Registration Number is 500 2481 05. For activities relating to regulated mortgages and non-investment insurance contracts, Peter Alan Limited is an appointed representative of Connells Limited which is authorised and regulated by the Financial Conduct Authority. Connells Limited's Financial Services Register number is 302221. Most buy-to-let mortgages are not regulated.

