



Nant Talwg Way, £425,000

- NO ONGOING CHAIN
- POTENTIAL TO EXTEND *stpp* - DOUBLE LENGTH GARAGE
- CLOSE TO PORTHKERRY PARK, ROMILLY PARK & BEACHES
- Council Tax Band E
- Primary School Catchment - Romilly, Ysgol Sant Baruc, St Helens, All Saints / Secondary School Catchment -



 4  1  2



About the property

CUL-DE-SAC LOCATION WITH WALKS TO MILLWOOD & PORTHERRY PARK - This ideal family home with double garage, along with mature front and rear gardens is situated in a sought-after area and conveniently located close to shops, public transport links and within popular school catchment areas.

Accommodation

Entrance Hallway

Enter via UPVC glazed door, wooden laminate water resistant flooring, power points, radiator, understairs cupboard housing new boiler installed in 2023, stairs to first floor;-

Cloakroom

W.C., wash hand basin, splash back tiled areas, radiator, wooden laminate water resistant flooring, window to side.

Living/ Dining Room

29' 8" max x 11' 8" max (9.04m max x 3.56m max)

T.V. point, power points, radiator, fitted carpet, window to front, open plan to Dining Room, patio doors to rear garden.

Kitchen

11' 8" x 8' 6" (3.56m x 2.59m)

Modern Wren kitchen with complimentary Granite worktops, inset Belfast sink and mixer tap, inset gas hob, overhead cooker hood, integral single oven and a built-in microwave/combination oven, integral dishwasher, integral fridge/ freezer, space for utilities, power points, wooden laminate water resistant flooring, window to rear aspect, door leading to Rear Garden.



Landing

Fitted carpet, power points, radiator, loft hatch giving access to loft, window to side, fitted airing cupboard.

Bedroom One

12' 7" plus wardrobes x 12' 6" max (3.84m plus wardrobes x 3.81m max)

Fitted wardrobes, fitted carpet, power points, radiator, window to front aspect.

Bedroom Two

10' 8" plus wardrobes x 9' 4" (3.25m plus wardrobes x 2.84m)

Fitted wardrobes, fitted carpet, power points, radiator, window to rear.

Bedroom Three

9' 2" plus fitted cupboard x 8' 7" (2.79m plus fitted cupboard x 2.62m)

Fitted cupboard, fitted carpet, power points, radiator, window to front.

Bedroom Four

9' 4" plus fitted wardrobes x 8' 7" (2.84m plus fitted wardrobes x 2.62m)

Fitted wardrobes, fitted carpet, power points, radiator, window to rear.

Bathroom

W.C., wash hand basin, bath, separate shower cubicle, splash back tiled areas, radiator, window to side aspect.

To The Front

Driveway for multiple vehicles, partly laid to lawn, side access to rear, pull up-and-over door to double length Garage *POTENTIAL TO CONVERT GARAGE stpp*.

To The Rear

Larger than average plot. Patio area, laid to lawn, outside tap, side access to front. *POTENTIAL TO EXTEND stpp*.

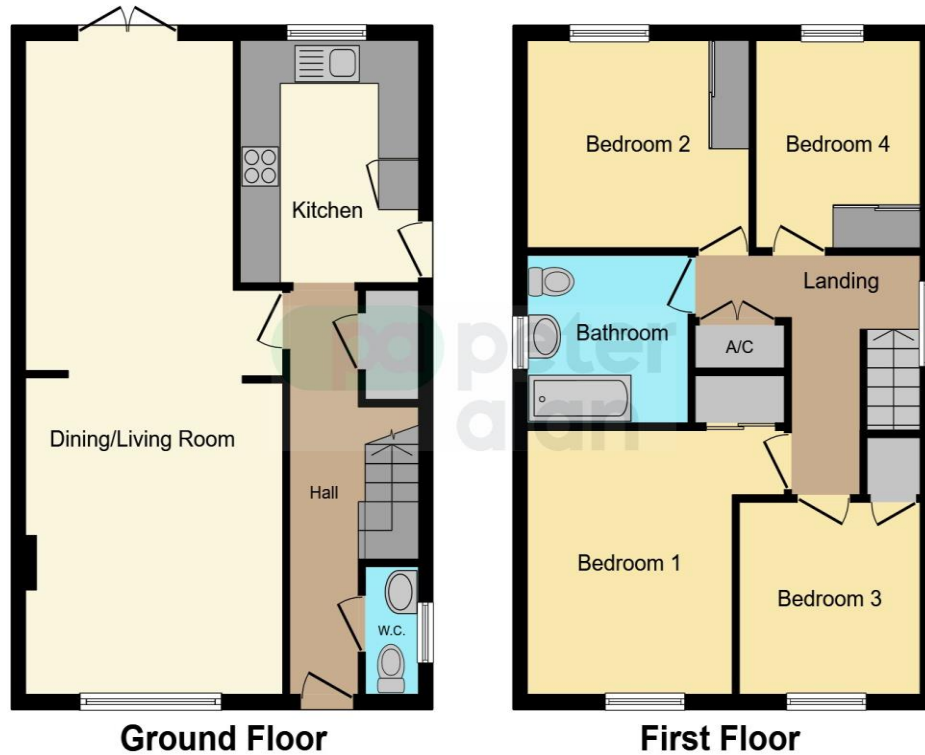
Disclaimer

Please note this property is being sold by a relative of a Peter Alan Staff Member.

01446 733224

barry@peteralan.co.uk

Floorplan



This floorplan is for illustrative purposes only and is not drawn to scale. Measurements, floor-areas, openings and orientations are approximate. They should not be relied upon for any purpose and do not form any part of an agreement. No liability is taken for any error or mis-statement. All parties must rely on their own inspections.

Important Information

Note while we endeavour to make our sales details accurate and reliable, if there is any point which is of particular interest to you, please contact the office and we will be pleased to confirm the position for you. We have not personally tested any apparatus, equipment, fixtures, fittings or services and cannot verify they are in working order or fit for their purposes. Nothing in these particulars is intended to indicate that carpets or curtains, furnishings or fittings, electrical goods (whether wired or not). Gas fires or light fittings or any other fixtures not expressly included form part of the property offered for sale. This computer generated Floorplan, if applicable, is intended as a general guide to the layout and design of the property. It is not to scale and should not be relied upon for dimensions. Tenure: We cannot confirm the tenure of the property as we have not had access to the legal documents. The buyer is advised to obtain verification from their solicitor or surveyor.

Peter Alan Limited is registered in England and Wales under company number 2073153, Registered Office is Cumbria House, 16-20 Hockliffe Street, Leighton Buzzard, Bedfordshire, LU7 1GN. VAT Registration Number is 500 2481 05. For activities relating to regulated mortgages and non-investment insurance contracts, Peter Alan Limited is an appointed representative of Connells Limited which is authorised and regulated by the Financial Conduct Authority. Connells Limited's Financial Services Register number is 302221. Most buy-to-let