



Woodham Park, £280,000

- Council Tax Band C
- RENOVATED TO A HIGH STANDARD
- INTEGRAL COFFEE MACHINE, FRIDGE FREEZER, DISHWASHER & WASHER/ DRYER
- CLOSE TO LOCAL AMENITIES; PARKS, POPULAR SCHOOL CATCHMENT
- SPACIOUS DRIVEWAY & REAR GARDEN
- EPC Rating: Awaiting



 3  1  1



About the property

RENOVATED TO A HIGH STANDARD - MUST VIEW TO APPRECIATE FITTINGS - Close to local amenities; popular school catchment, parks, shops, supermarkets, public transport routes, easy access to link roads leading to M4 corridor. *Call 01446 733224*

Accommodation

Entrance Hall

Composite door, tiled floor, radiator, power points, stairs to 1st floor, double doors into Living/ Dining/ Kitchen;-

Living/ Dining/ Kitchen

22' 11" max x 16' 4" max (6.99m max x 4.98m max)

Matching wall and base units with complimentary work tops, inset induction hob with induction cooker hood into island, integrated fridge freezer, integrated coffee machine, integrated dishwasher, integrated washing machine, power points, inset sink, drain and mixer tap, french doors to rear garden, window to front and rear, power points, upright radiators, continuation of tiled flooring.

Landing

Loft hatch with attached pull down ladder, fitted carpet, power points, fitted storage cupboard, doors into Bedrooms and Bathroom;-



Bedroom 1

11' 5" x 10' 8" (3.48m x 3.25m)

Laminate flooring, power points, radiator, window to front.

Bedroom 2

11' 2" x 10' 8" (3.40m x 3.25m)

Laminate flooring, power points, radiator, window to rear.

Bedroom 3

8' 9" x 7' 4" max (2.67m x 2.24m max)

Laminate flooring, power points, radiator, window to front.

Bathroom

6' 11" x 5' 6" (2.11m x 1.68m)

W.C., wash hand basin with storage, bath with over head shower, tiled walls and flooring, radiator, electronic extractor fan, window to rear.

To The Front

Paved driveway for multiple vehicles.

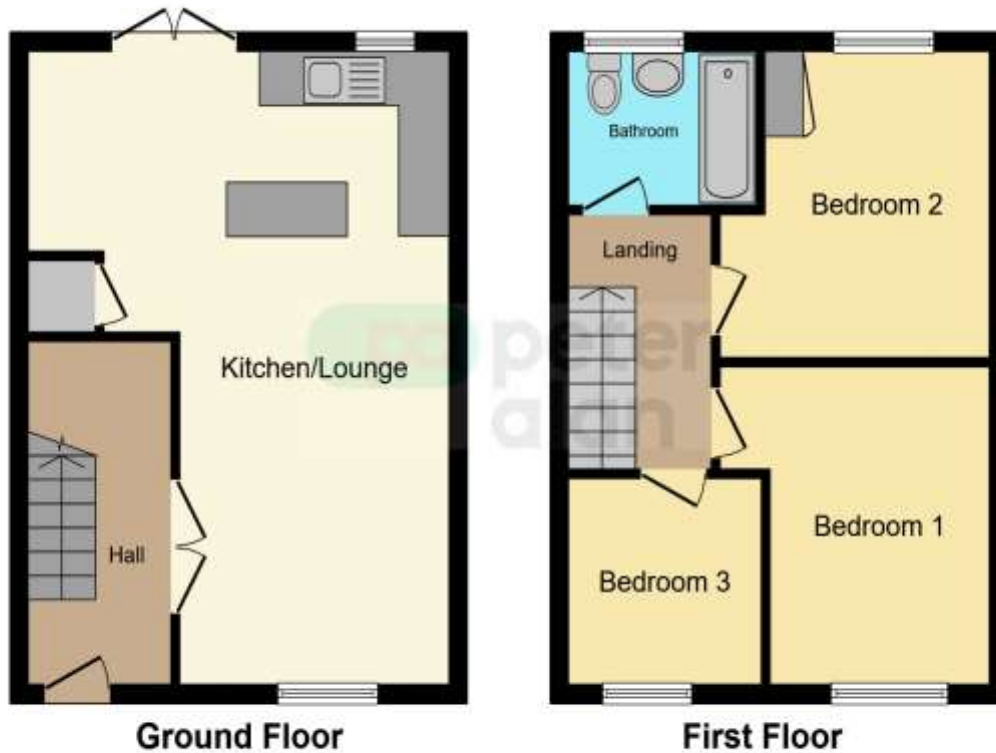
Rear Garden

Patio area, laid to lawn, enclosed with fencing, outside tap.

01446 733224

barry@peteralan.co.uk

Floorplan



This floorplan is for illustrative purposes only and is not drawn to scale. Measurements, floor-areas, openings and orientations are approximate. They should not be relied upon for any purpose and do not form any part of an agreement. No liability is taken for any error or mis-statement. All parties must rely on their own inspections.

Important Information

Note while we endeavour to make our sales details accurate and reliable, if there is any point which is of particular interest to you, please contact the office and we will be pleased to confirm the position for you. We have not personally tested any apparatus, equipment, fixtures, fittings or services and cannot verify they are in working order or fit for their purposes. Nothing in these particulars is intended to indicate that carpets or curtains, furnishings or fittings, electrical goods (whether wired or not). Gas fires or light fittings or any other fixtures not expressly included form part of the property offered for sale. This computer generated Floorplan, if applicable, is intended as a general guide to the layout and design of the property. It is not to scale and should not be relied upon for dimensions. Tenure: We cannot confirm the tenure of the property as we have not had access to the legal documents. The buyer is advised to obtain verification from their solicitor or surveyor.

Peter Alan Limited is registered in England and Wales under company number 2073153, Registered Office is Cumbria House, 16-20 Hockliffe Street, Leighton Buzzard, Bedfordshire, LU7 1GN. VAT Registration Number is 500 2481 05. For activities relating to regulated mortgages and non-investment insurance contracts, Peter Alan Limited is an appointed representative of Connells Limited which is authorised and regulated by the Financial Conduct Authority. Connells Limited's Financial Services Register number is 302221. Most buy-to-let