



Bull Cliff Walk, £415,000

- GARDEN SUBURBS
- POTENTIAL TO EXTEND / CONVERT GARAGE *stpp*
- NO ONGOING CHAIN
- CLOSE TO ROMILLY PARK, PORTHKERRY PARK, BEACHES
- Primary School Catchment - Romilly, Ysgol Sant Baruc, St Helens, All Saints
- Secondary School Catchment -



 4  1  2



About the property

FREEHOLD UPON COMPLETION - Primary School Catchment - Romilly, Ysgol Sant Baruc, St Helens, All Saints / Secondary School Catchment - Whitmore, Bro Morgannwg, St Richard Gwyn. Romilly Park on your door step - Close proximity to The Knap, Porthkerry Park & Beaches.

Accommodation

Entrance Hall

UPVC front entrance door, carpeted flooring, power points, store cupboard.

Downstairs Cloakroom

W.C., wash hand basin, tiled areas, radiator, window to side.

Living Room

14' 1" x 12' 7" (4.29m x 3.84m)

T.V. point, power points, radiator, fitted carpet, window to front aspect, doors leading into Dining Room.

Dining Room

12' 2" x 10' 9" (3.71m x 3.28m)

Power points, radiator, fitted carpet, door to Rear Garden, door to Kitchen.



Kitchen 12' 5" x 9' 5" (3.78m x 2.87m)

Matching wall and base units with complimentary works, fitted breakfast bars, inset sink, drain and mixer tap, gas hob, oven and over head cooker hood, space for utilities, power points, window to rear aspect, door to Hallway, door to Side Entrance.

Landing Fitted carpet, power points, radiator, loft hatch.

Bedroom One 10' 6" plus wardrobes x 10' (3.20m plus wardrobes x 3.05m)

Fitted wardrobes, fitted carpeted, power points, radiator, window to rear.

Bedroom Two 12' 8" max x 10' 5" max (3.86m max x 3.17m max)

Fitted wardrobes, fitted carpeted, power points, radiator, window to rear.

Bedroom Three 9' 4" x 6' 11" (2.84m x 2.11m)

Fitted carpet, power points, radiator, window to front.

Bedroom Four 9' 10" x 6' 10" (3.00m x 2.08m)

Fitted carpet, power points, radiator, window to rear.

Shower Room W.C., wash hand basin, shower cubicle, tiled areas, radiator, window to side.

Outside

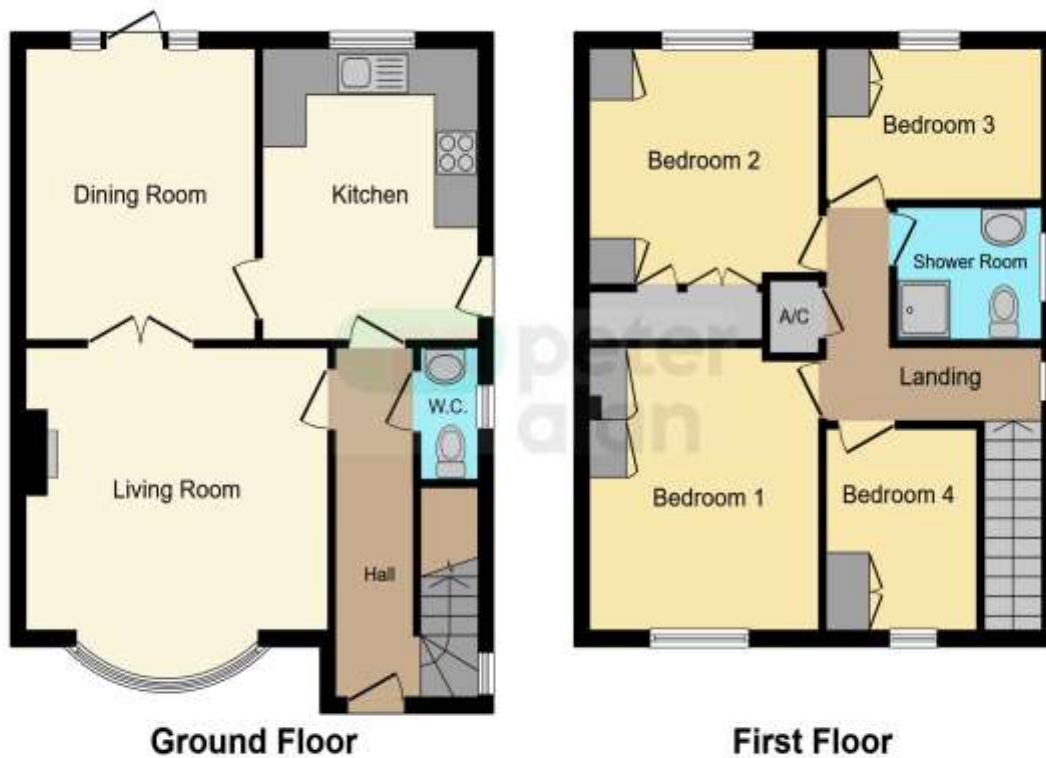
To The Front

Driveway, garage to side, side access to rear.

To The Rear

Patio area, generous plot to side, outside water tap, door giving access to Garage, wrought iron gate to front.

Floorplan



This floorplan is for illustrative purposes only and is not drawn to scale. Measurements, floor-areas, openings and orientations are approximate. They should not be relied upon for any purpose and do not form any part of an agreement. No liability is taken for any error or mis-statement. All parties must rely on their own inspections.

Important Information

Note while we endeavour to make our sales details accurate and reliable, if there is any point which is of particular interest to you, please contact the office and we will be pleased to confirm the position for you. We have not personally tested any apparatus, equipment, fixtures, fittings or services and cannot verify they are in working order or fit for their purposes. Nothing in these particulars is intended to indicate that carpets or curtains, furnishings or fittings, electrical goods (whether wired or not). Gas fires or light fittings or any other fixtures not expressly included form part of the property offered for sale. This computer generated Floorplan, if applicable, is intended as a general guide to the layout and design of the property. It is not to scale and should not be relied upon for dimensions. Tenure: We cannot confirm the tenure of the property as we have not had access to the legal documents. The buyer is advised to obtain verification from their solicitor or surveyor.

Peter Alan Limited is registered in England and Wales under company number 2073153, Registered Office is Cumbria House, 16-20 Hockliffe Street, Leighton Buzzard, Bedfordshire, LU7 1GN. VAT Registration Number is 500 2481 05. For activities relating to regulated mortgages and non-investment insurance contracts, Peter Alan Limited is an appointed representative of Connells Limited which is authorised and regulated by the Financial Conduct Authority. Connells Limited's Financial Services Register number is 302221. Most buy-to-let