



Cornwall Rise, £240,000

- OPEN PLAN LIVING/ DINING/ KITCHEN - COUNCIL TAX BAND - D
- MODERN FITTINGS
- 3 BEDROOMS, CLOAKROOM & BATHROOM
- GARAGE & DRIVEWAY
- ELEVATED VIEWS TO REAR
- EPC Rating: D



 3  1  1



About the property

MODERN FITTINGS - CLOAKROOM & BATHROOM - DRIVEWAY & GARAGE. Comprising of hallway, cloakroom, living room, dining room, kitchen, landing, 3 bedrooms, bathroom, garage and parking to rear, driveway to front, elevated views to rear, enclosed rear garden.

Accommodation

Hallway UPVC glazed door, tiled flooring, power points, radiator, stairs to 1st floor.

W.C

W.C, wash hand basin, splash back tiles, radiator.

Lounge

14' 3" x 13' 3" (4.34m x 4.04m)

T.V point, power points, radiator, wood floor, glazed window to front.

Kitchen / Diner

20' 2" x 9' 3" (6.15m x 2.82m)

Matching wall and base units with complimentary work tops, inset sink, drainer and mixer tap, inset gas hob, oven and cooker hood, space for utilities, inset microwave, power points, radiator, tiled flooring, glazed window to side and rear, patio doors to rear garden.



Landing

Carpet, loft hatch, glazed window to side.

Bedroom One

13' 2" x 10' 11" (4.01m x 3.33m)

Fitted wardrobes, wood floor, power points, radiator, glazed window to front.

Bedroom Two

14' 4" x 10' 11" (4.37m x 3.33m)

Wood floor, power points, radiator, glazed window to front.

Bedroom Three

8' 9" x 8' 8" (2.67m x 2.64m)

Fitted cupboard, power points, radiator, wood floor, glazed window to front.

Bathroom

W.C, wash hand basin, bath with over head shower, splash back tiles, radiator, glazed window to rear.

Loft

20' max x 10' max (6.10m max x 3.05m max)

Carpet, three sky lights, power points.

Front

Driveway.

Rear

Elevated decking, patio areas.

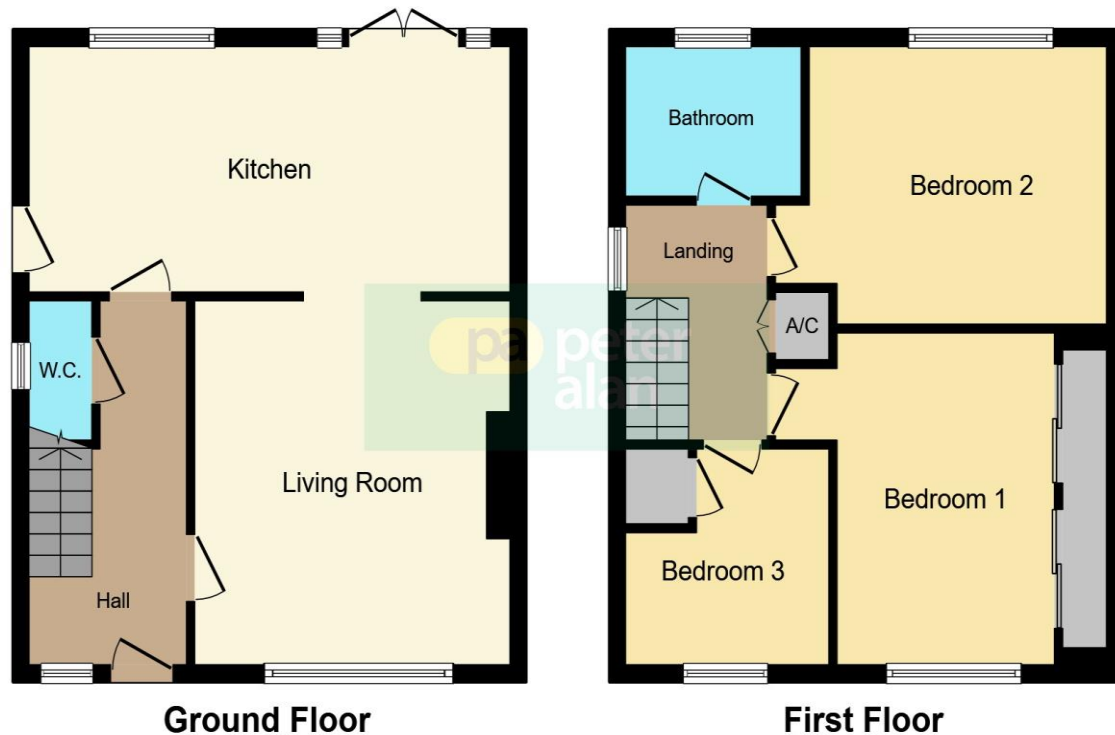
Garage

Power points.

01446 733224

barry@peteralan.co.uk

Floorplan



This floorplan is for illustrative purposes only and is not drawn to scale. Measurements, floor-areas, openings and orientations are approximate. They should not be relied upon for any purpose and do not form any part of an agreement. No liability is taken for any error or mis-statement. All parties must rely on their own inspections.

Important Information

Note while we endeavour to make our sales details accurate and reliable, if there is any point which is of particular interest to you, please contact the office and we will be pleased to confirm the position for you. We have not personally tested any apparatus, equipment, fixtures, fittings or services and cannot verify they are in working order or fit for their purposes. Nothing in these particulars is intended to indicate that carpets or curtains, furnishings or fittings, electrical goods (whether wired or not). Gas fires or light fittings or any other fixtures not expressly included form part of the property offered for sale. This computer generated Floorplan, if applicable, is intended as a general guide to the layout and design of the property. It is not to scale and should not be relied upon for dimensions. Tenure: We cannot confirm the tenure of the property as we have not had access to the legal documents. The buyer is advised to obtain verification from their solicitor or surveyor.

Peter Alan Limited is registered in England and Wales under company number 2073153, Registered Office is Cumbria House, 16-20 Hockliffe Street, Leighton Buzzard, Bedfordshire, LU7 1GN. VAT Registration Number is 500 2481 05. For activities relating to regulated mortgages and non-investment insurance contracts, Peter Alan Limited is an appointed representative of Connells Limited which is authorised and regulated by the Financial Conduct Authority. Connells Limited's Financial Services Register number is 302221. Most buy-to-let