



Lime Grove, ##Invalid offers in excess of £180,000

- 2 DOUBLE BEDROOMS
- LARGER THAN AVERAGE REAR GARDEN
- BEAUTIFULLY PRESENTED THROUGHOUT
- MODERN FITTINGS THROUGHOUT
- CLOSE TO LINK ROADS LEADING TO M4 CORRIDOR
- EPC Rating: C



 2  1  1



About the property

2 DOUBLE BEDROOMS - MODERN FITTINGS THROUGHOUT - Briefly comprising of hallway, living/ dining room, kitchen, landing, 2 double bedrooms, bathroom, larger than average rear garden, landscaped front, on street parking.

Accommodation

Entrance Hallway

Enter via composite door, wood effect laminate flooring, power points, radiator, plenty of space for storage, stairs ascending to 1st floor, doors leading into Living/ Dining Room and Kitchen:-

Living/ Dining Room

17' 5" x 13' 5" max (5.31m x 4.09m max)

T.V. point, power points, radiator, wood effect laminate flooring, feature fire place, glazed window to front, French doors to Rear Garden.

Kitchen

12' 9" x 7' 11" (3.89m x 2.41m)

Matching wall and base units with complimentary work tops, inset sink, drainer and mixer tap, inset gas hob, oven and over head cooker hood, space for fridge freezer, fitted breakfast bar, splash back tiled areas, power points, radiator, glazed window to rear aspect, UPVC glazed door to Rear Garden.



Landing

Fitted carpet, fitted airing cupboard, glazed window to rear aspect. Doors into Bedrooms and Bathroom;-

Bedroom One

17' 7" x 8' 6" plus wardrobes (5.36m x 2.59m plus wardrobes)

Fitted carpet, power points, radiator, fitted wardrobes, glazed window to front and rear aspect.

Bedroom Two

11' 9" x 7' 8" plus alcove (3.58m x 2.34m plus alcove)

Fitted carpet, power points, radiator, glazed window to front aspect.

Bathroom

W.C., wash hand basin, bath with over head shower, splash back tiled areas, vinyl flooring, glazed window to rear aspect.

Outside

To The Front

Recently landscaped. Artificial grass, laid pathway.

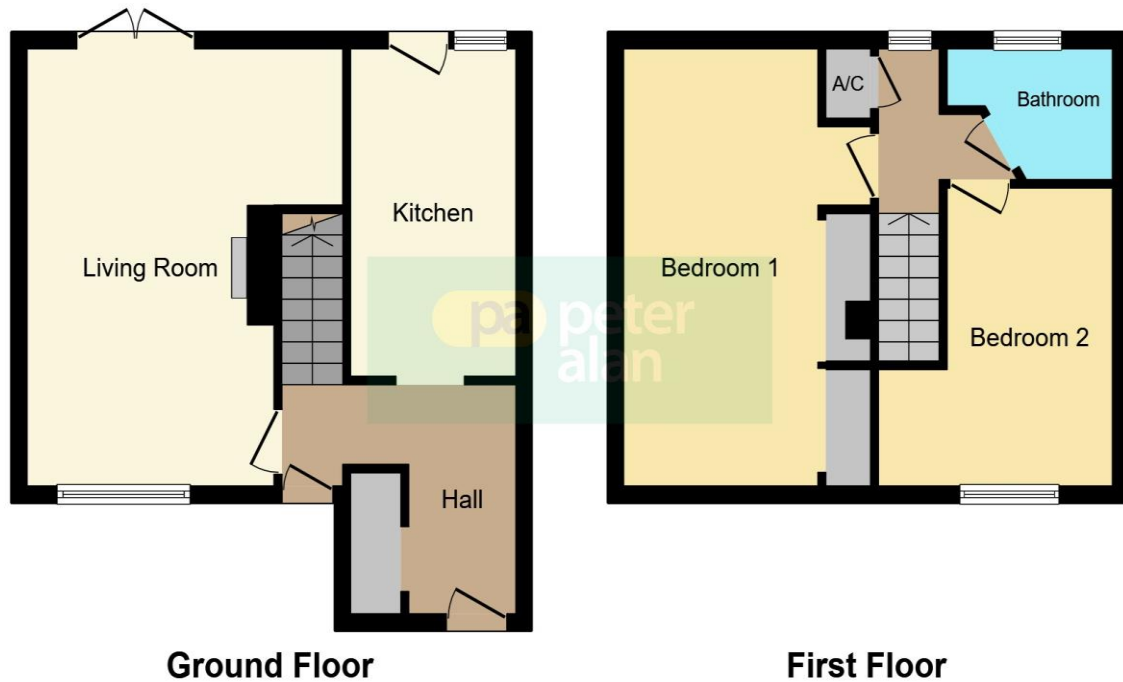
To The Rear

Generous sized rear garden. Decorative pebbled areas, laid to lawn, elevated decked areas, outside tap, enclosed with fencing.

01446 733224

barry@peteralan.co.uk

Floorplan



This floorplan is for illustrative purposes only and is not drawn to scale. Measurements, floor-areas, openings and orientations are approximate. They should not be relied upon for any purpose and do not form any part of an agreement. No liability is taken for any error or mis-statement. All parties must rely on their own inspections.

Important Information

Note while we endeavour to make our sales details accurate and reliable, if there is any point which is of particular interest to you, please contact the office and we will be pleased to confirm the position for you. We have not personally tested any apparatus, equipment, fixtures, fittings or services and cannot verify they are in working order or fit for their purposes. Nothing in these particulars is intended to indicate that carpets or curtains, furnishings or fittings, electrical goods (whether wired or not). Gas fires or light fittings or any other fixtures not expressly included form part of the property offered for sale. This computer generated Floorplan, if applicable, is intended as a general guide to the layout and design of the property. It is not to scale and should not be relied upon for dimensions. Tenure: We cannot confirm the tenure of the property as we have not had access to the legal documents. The buyer is advised to obtain verification from their solicitor or surveyor.

Peter Alan Limited is registered in England and Wales under company number 2073153, Registered Office is Cumbria House, 16-20 Hockliffe Street, Leighton Buzzard, Bedfordshire, LU7 1GN. VAT Registration Number is 500 2481 05. For activities relating to regulated mortgages and non-investment insurance contracts, Peter Alan Limited is an appointed representative of Connells Limited which is authorised and regulated by the Financial Conduct Authority. Connells Limited's Financial Services Register number is 302221. Most buy-to-let