



4 2 3

Caer Wenallt, Pantmawr, Rhiwbina Cardiff

£550,000

pa black

02920 612328
whitchurch@peteralan.co.uk



About the property

A beautifully improved and totally re-furnished four bedroom semi-detached family house, built circa 1960, and fronting Caer Wenallt, a quiet private residential road, away from passing traffic yet well placed for access to Rhiwbina Garden Village, Whitchurch Village and an exit onto Manor Way, allowing fast travel to Cardiff City Centre, the A 470 and the M4. This deceptively spacious home provides generous well designed and versatile living space with a capacious open plan fully fitted new kitchen, dining room and family room (30'10 x 18'0), inset with new PVC picture windows and sliding double glazed PVC full height patio doors which open on to a sun terrace with outlooks that extend across the large and lovely private rear gardens. The windows in the open plan kitchen area are maximum height aluminum frames. The new kitchen was completed in 2018 and includes Quartz Granite worktops and integrated appliances, whilst the dining room and family room includes stunning wood block floors and a contemporary wall mounted Log Burner effect gas living flame clear view glass fronted fire, also fitted in 2018. The property is approached by a useful porch which leads into a large and impressive entrance reception hall (12'6 x 8'8) finished with stylish Porcelanosa tiled floors, and providing access to a stunning new shower room (2020) fitted with Ted Baker designed wall tiles.

Accommodation











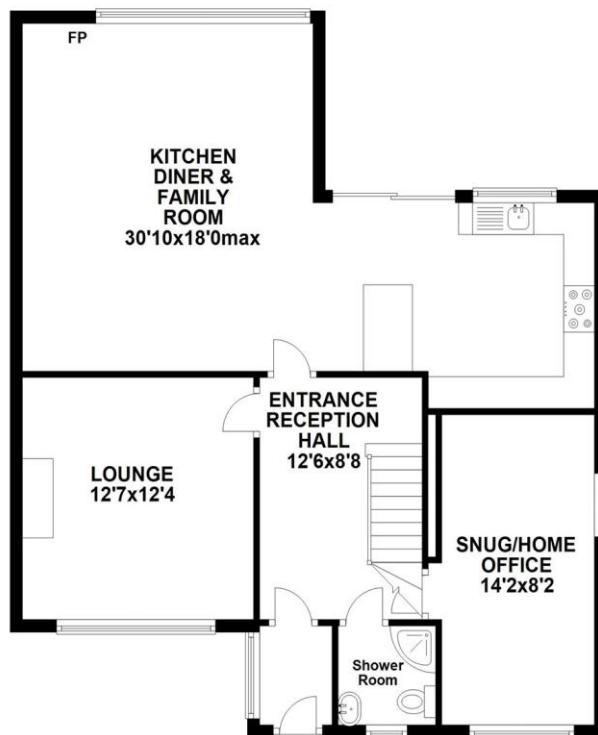
02920 612328

whitchurch@peteralan.co.uk



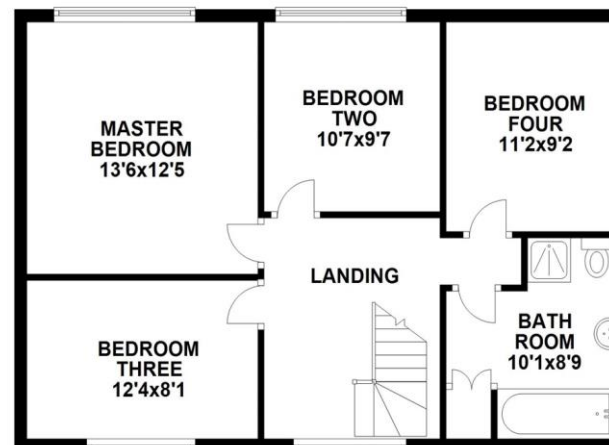
GROUND FLOOR 904 SQUARE FEET

Approx. 83.9 sq. metres (903.6 sq. feet)



FIRST FLOOR 690 SQUARE FEET

Approx. 64.0 sq. metres (689.3 sq. feet)



Total area: approx. 148.0 sq. metres (1592.9 sq. feet)

Important Information

Note while we endeavour to make our sales details accurate and reliable, if there is any point which is of particular interest to you, please contact the office and we will be pleased to confirm the position for you. We have not personally tested any apparatus, equipment, fixtures, fittings or services and cannot verify they are in working order or fit for their purposes. Nothing in these particulars is intended to indicate that carpets or curtains, furnishings or fittings, electrical goods (whether wired or not), Gas fires or light fittings or any other fixtures not expressly included form part of the property offered for sale. This computer generated Floorplan, if applicable, is intended as a general guide to the layout and design of the property. It is not to scale and should not be relied upon for dimensions. Tenure: We cannot confirm the tenure of the property as we have not had access to the legal documents. The buyer is advised to obtain verification from their solicitor or surveyor.

Peter Alan Limited is registered in England and Wales under company number 2073153, Registered Office is Cumbria House, 16-20 Hockliffe Street, Leighton Buzzard, Bedfordshire, LU7 1GN. VAT Registration Number is 500 2481 05. For activities relating to regulated mortgages and non-investment insurance contracts, Peter Alan Limited is an appointed representative of Connells Limited which is authorised and regulated by the Financial Conduct Authority. Connells Limited's Financial Services Register number is 302221. Most buy-to-let mortgages are not regulated.

