



 4  3  2

Clos Rhys Meurug, Capel Llanilltern Cardiff

£460,000

 peter  
alan

02920 612328  
whitchurch@peteralan.co.uk







## About the property

A well designed and stylish four bedroom detached double fronted house with bright and versatile living space, providing 1200 square feet, and occupying a prime location fronting a wide section of grassland, on the outskirts of this impressive development built in 2021, by Messrs Charles Church, a reputable firm of National House Builders completed with a 10 year NHBC guarantee. The location is perfect for a small family, away from immediate passing traffic, with a stunning landscaped rear garden to include artificial grass and glass balustrade, a private double length drive, and a large garage. With its versatile living space this family home provides comfortable living space with four good sized bedrooms and two bathrooms, fronting a select close with comprising chiefly detached dwelling homes, convenient for access to St Fagans, Radyr and Llandaff. The property includes a downstairs cloak room, a lounge (16'6 x 12'0), a super sized open plan kitchen, dining room (25'4 x 11'3), and a very versatile home-office/study (10'1 x 8'5). The bright and well maintained first floor accommodation comprises four good sized bedrooms, one being ensuite to the generous master bedroom. The property also benefits gas heating with panel radiators, PVC double glazed windows with luxury LVT flooring throughout the downstairs.

## Accommodation

### Entrance Hall

### Study

10' 1" x 8' 5" ( 3.07m x 2.57m )

### Lounge

16' 6" x 12' ( 5.03m x 3.66m )

### Downstairs Cloak Room

### Kitchen And Dining Room

25' 4" x 11' 3" ( 7.72m x 3.43m )

### First Floor Landing

### Master Bedroom One

12' 5" x 12' 3" ( 3.78m x 3.73m )

### Ensuite Shower Room

### Bedroom Two

14' 3" x 9' ( 4.34m x 2.74m )

### Bedroom Three

10' 9" x 9' ( 3.28m x 2.74m )

### Bedroom Four

10' 5" x 7' 10" ( 3.17m x 2.39m )

### Family Bathroom

### Outside

### Front Gardens

### Entrance Drive

### Garage

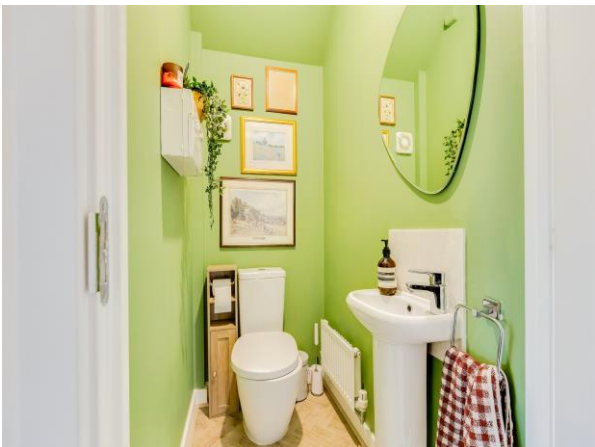
### Rear Gardens





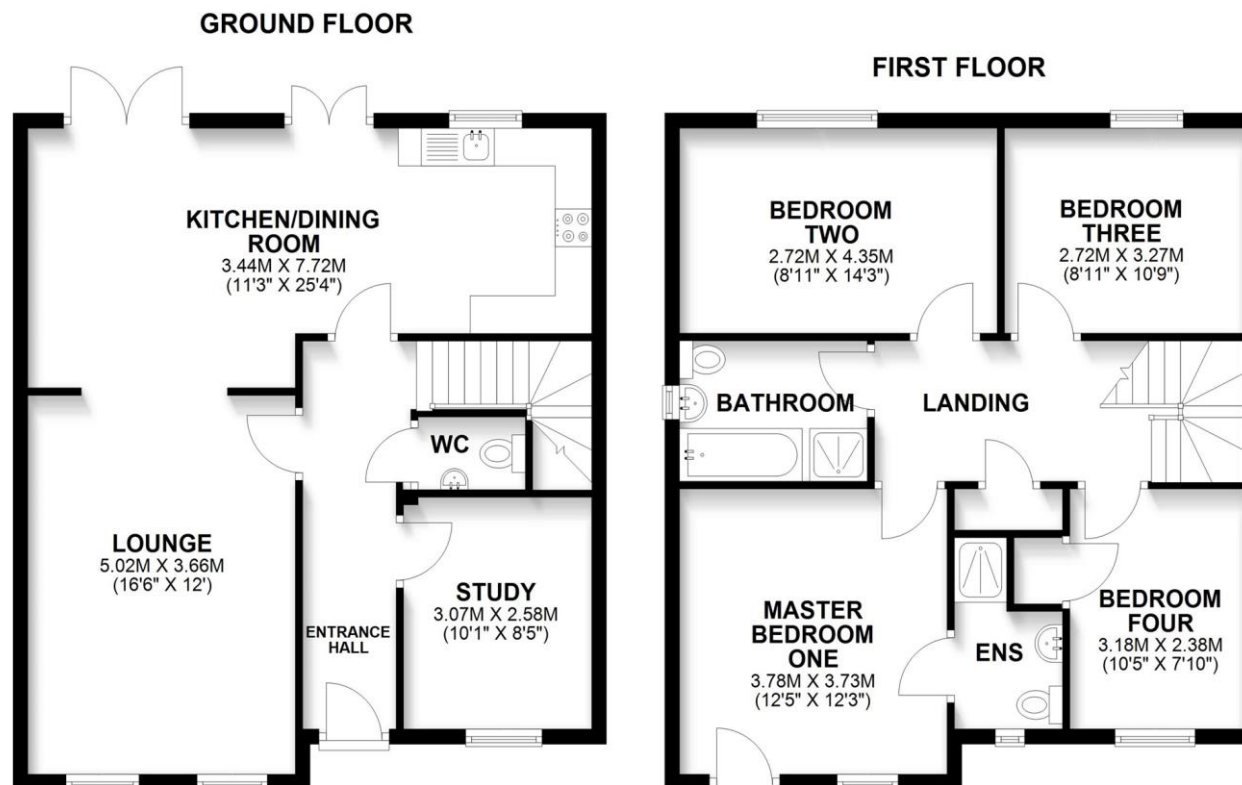






02920 612328

whitchurch@peteralan.co.uk



Under the terms of the Estate Agency Act 1979 (Section 21), please note that the vendor is an Employee of the Connells Group of companies.

## Important Information

Note while we endeavour to make our sales details accurate and reliable, if there is any point which is of particular interest to you, please contact the office and we will be pleased to confirm the position for you. We have not personally tested any apparatus, equipment, fixtures, fittings or services and cannot verify they are in working order or fit for their purposes. Nothing in these particulars is intended to indicate that carpets or curtains, furnishings or fittings, electrical goods (whether wired or not), Gas fires or light fittings or any other fixtures not expressly included form part of the property offered for sale. This computer generated Floorplan, if applicable, is intended as a general guide to the layout and design of the property. It is not to scale and should not be relied upon for dimensions. Tenure: We cannot confirm the tenure of the property as we have not had access to the legal documents. The buyer is advised to obtain verification from their solicitor or surveyor.

Peter Alan Limited is registered in England and Wales under company number 2073153, Registered Office is Cumbria House, 16-20 Hockliffe Street, Leighton Buzzard, Bedfordshire, LU7 1GN. VAT Registration Number is 500 2481 05. For activities relating to regulated mortgages and non-investment insurance contracts, Peter Alan Limited is an appointed representative of Connells Limited which is authorised and regulated by the Financial Conduct Authority. Connells Limited's Financial Services Register number is 302221. Most buy-to-let mortgages are not regulated.

