



Graigwen, Morganstown offers in the region of £170,000

- Council Tax Band - C
- GROUND FLOOR
- REAR GARDEN
- VIEWS OF CASTELL COCH
- NO CHAIN
- TWO BEDROOMS
- BATHROOM
- PLENTY OF STORAGE
- EPC Rating: C



 2  1  1



About the property

Well presented ground floor two bedroom apartment in Morganstown. Accommodation comprises entrance hallway, hallway, lounge, kitchen with pantry cupboard, two double bedrooms with storage cupboards and bathroom. The garden has a patio area with direct views of the Castle and also has outside storage sheds suitable for storing bikes, garden tools etc.

The village of Morganstown is approximately 8 miles from Cardiff City Centre and can be found nestled between the quaint village of Gwaelod-Y-Garth and Radyr. Amenities include a public house and restaurant, hairdressers, garden centre with farm shop, coffee shop, veterinary surgery and other retail outlets. The M4 and the A470 is a few minutes drive. The property is also in the catchment area for Radyr Comprehensive School.



Accommodation

Entrance Hallway

Lounge

13' 11" max x 12' 8" max (4.24m max x 3.86m max)

Kitchen

9' 1" max x 8' 6" max (2.77m max x 2.59m max)

Bathroom

Bedroom One

12' 1" max x 8' 6" max (3.68m max x 2.59m max)

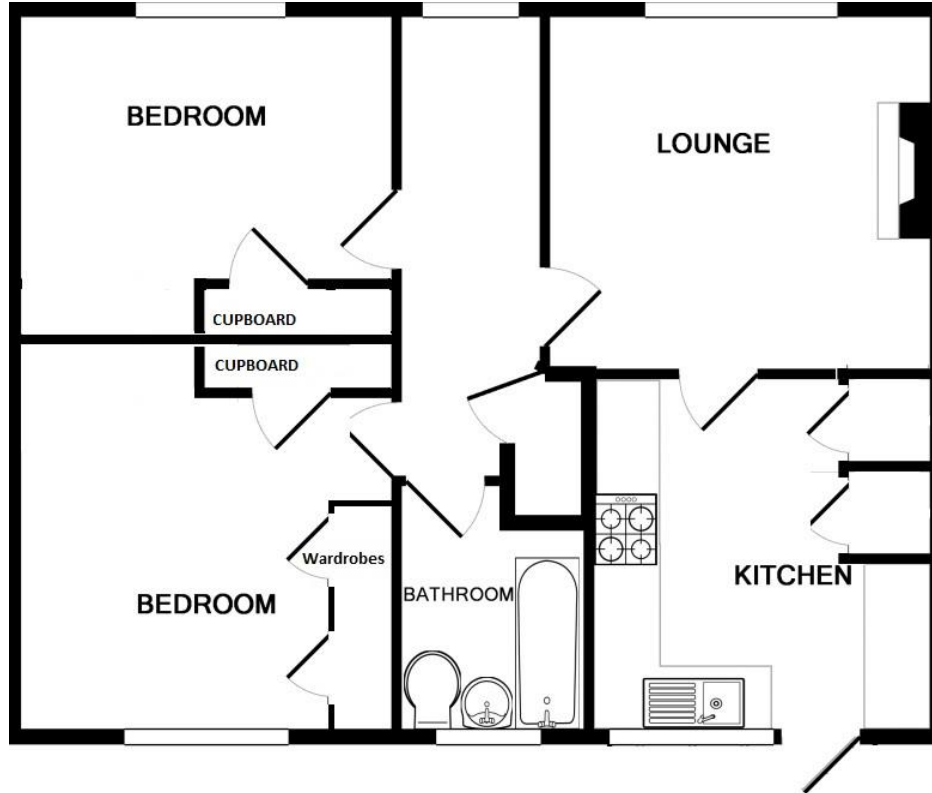
Bedroom Two

10' 6" x 9' 9" to wardrobes (3.20m x 2.97m to wardrobes)

02920 612328

whitchurch@peteralan.co.uk

Floorplan



Important Information

Note while we endeavour to make our sales details accurate and reliable, if there is any point which is of particular interest to you, please contact the office and we will be pleased to confirm the position for you. We have not personally tested any apparatus, equipment, fixtures, fittings or services and cannot verify they are in working order or fit for their purposes. Nothing in these particulars is intended to indicate that carpets or curtains, furnishings or fittings, electrical goods (whether wired or not). Gas fires or light fittings or any other fixtures not expressly included form part of the property offered for sale. This computer generated Floorplan, if applicable, is intended as a general guide to the layout and design of the property. It is not to scale and should not be relied upon for dimensions. Tenure: We cannot confirm the tenure of the property as we have not had access to the legal documents. The buyer is advised to obtain verification from their solicitor or surveyor.

Peter Alan Limited is registered in England and Wales under company number 2073153, Registered Office is Cumbria House, 16-20 Hockliffe Street, Leighton Buzzard, Bedfordshire, LU7 1GN. VAT Registration Number is 500 2481 05. For activities relating to regulated mortgages and non-investment insurance contracts, Peter Alan Limited is an appointed representative of Connells Limited which is authorised and regulated by the Financial Conduct Authority. Connells Limited's Financial Services Register number is 302221. Most buy-to-let