



 4  4  4

31 Angelica Way, Thornhill, Cardiff, CF14 9FJ.

£695,000

 **peter
alan**

02920 618552
llanishen@peteralan.co.uk



A capacious detached four bedroom double fronted family home, built in 1999 by Messrs Persimmon Homes, a reputable firm of national house builders and completed with a 10-year NHBC guarantee. This most impressive modern house has been greatly extended in 2010, and now provides a very generous 1831 square feet, whilst occupying a landscaped corner plot with a deep tree lined lawned front garden and a super-sized 4-5 car private entrance drive.

The well designed and versatile living space includes a large central entrance reception hall, a new stylish ground floor shower room (2024), a comfortable lounge, a useful snug/home office, a large well fitted open plan kitchen and dining room (23'4 x 9'5), and a further PVC double glazed conservatory which opens onto the delightful rear gardens. The family sized first floor comprises a central landing with a small but effective home office and a stunning roof garden terrace which overlooks the magnificent tree lined front gardens. The master bedroom includes its own stylish ensuite shower room (2019), a walk-in wardrobe and a Mezzanine attic space approached by a custom-made staircase. There are three further double sized bedrooms, the guest bedroom with its own ensuite shower room (2010), and a further modern white family bathroom (2010).

The property also benefits white PVC double glazed windows, a modern electrical consumer unit installed in 2018, and gas heating with panel radiators and a modern conventional boiler installed in 2018 and serviced every year under a British Gas contract. This substantial family home occupies a truly delightful position fronting a quiet and select private residential cul de sac road, away from busy passing traffic, yet convenient for access to all local amenities.

Amenities

Within walking distance situated along Heol Hir, Thornhill is Thornhill Primary School, whilst also close by is a Sainsbury Super Store, a Pharmacy, a Doctors Surgery, a church and Llanishen Golf Course. There are many local pubs and restaurants within Thornhill including within walking distance the Cottage Inn close to Cefn Onn Country Park, The Miller & Carter Steak House, The Pendragon Public House and Restaurant, the New House Hotel and the Manor Park Hotel and restaurant. The iconic Lisvane and Llanishen Reservoir leisure attraction and visitor centre is a 20-minute walk away. Cefn Onn country Park provides charming walks and rides, whilst nearby is Lisvane Railway station which provides fast and economic travel to Queen Street and Cardiff Central.

Ground Floor Entrance Hall

Approached via a composite stylish double-glazed part panelled front entrance door leading to a central hall with tiled flooring and a full range of built out storage units along one side, contemporary radiator, elegant cornice ceiling.

Shower Room

Stylish and contemporary new shower room suite comprising a fully tiled double size shower with chrome fittings including waterfall fitment and hand fitment, clear glass shower door and screen, glass shaped wash hand basin with pop-up waste and mixer taps mounted on a built out high gloss vanity unit, W.C. with concealed cistern, contemporary vertical radiator, tiled flooring, air ventilator, PVC patterned glass double glazed window to front.

Inner Hallway With a wide carpeted returning staircase with moulded skirting boards and plinth lights leading to a gallery landing. Useful under stair storage cupboard. Further very useful walk-in cloaks hanging cupboard with tiled floor, coved ceiling and electric light.





Lounge 14' 2" x 13' 5" maximum (4.32m x 4.09m maximum)

Inset with a wide bay equipped with Georgian style PVC double glazed French doors with side screen windows that open on to the private front drive and overlook the tree lined frontage gardens. Stylish flooring, reproduction character fireplace with living flame coal effect gas fire with glass front and marble surround and hearth, wide alcove, coved ceiling, double radiator.

Snug 10' 10" x 8' 6" (3.30m x 2.59m) Approached independently from the inner hall, stylish flooring. panel ceiling with coving, Georgian style double glazed PVC French doors that open on to a sun terrace with outlooks across the landscaped rear gardens, radiator. Internal courtesy door leading to the garage.

Open Plan Kitchen/Dining Room 23' 4" x 9' 5" (7.11m x 2.87m) Independently approached from the inner hallway, fitted along three sides with a full range of panel fronted floor and eye level units with characteristic handles and round nosed laminate patterned worktops, incorporating a sink unit with chrome mixer taps, vegetable cleaner and drainer. Rangemaster range cooker with gas four ring hob together with a separate wok burner, integrated fan assisted electric ovens and grill, together with a Rangemaster canopy style extractor hood. Tiled walls, pretty glass fronted display cabinets with internal lights and glass shelves, integrated Beko dishwasher, integrated fridge freezer, breakfast bar with space for breakfast stools, ceramic tiled flooring



throughout, coved ceiling, PVC double glazed window with a rear garden outlook. Dining area with ample space for a large dining table and chairs, double and single radiators, sliding double glazed patio doors that open into the conservatory.

Utility Room 5' 6" x 5' 4" (1.68m x 1.63m) With matching floor and eye level units and laminate worktops incorporating a single bowl sink unit with mixer taps, space with plumbing for a washing machine, continuous tiled floor, radiator, part tiled walls, coved ceiling, eye level unit neatly housing a Vaillant gas boiler, double glazed part panelled outer door to side gardens.

Conservatory 12' 2" x 9' 1" (3.71m x 2.77m) Approached independently from the kitchen and dining room, constructed with a cavity brick plinth outer wall surmounted with white PVC double glazed windows and inset with PVC double glazed French doors that open on to a sun terrace, all beneath a polycarbonate pitched roof. Electric light and power.

First Floor Gallery Landing With a spindle balustrade, radiator, ornate cornice ceiling and a PVC double glazed window to front.

Mini Home Office 8' 10" x 3' 5" (2.69m x 1.04m) This small but very neatly located mini home office is approached from the landing via an archway opening and is perfect for working from home with electric light and power.



Balcony The property benefits from a first-floor front balcony which is approached from the landing via a PVC Georgian style double glazed French door. It has a decorative railing front and enjoys outlooks across the tree lined front gardens.

Master Bedroom One 21' 2" x 8' 7" (6.45m x 2.62m) Independently approached from the landing, inset with a PVC Georgian style double glazed front window together with a matching set of French doors that open directly on to the front balcony. Ceiling with spotlights, full range of fitted floor to ceiling height wardrobes, double radiator.

Walk-In Wardrobe Independently approached from the master bedroom is a very useful walk-in wardrobe measuring 5 ft depth x 3' 6" width fitted with shoe shelves and dual hanging space complete with an electric ceiling light and door.

Ensuite Shower Room Modern white contemporary and stylish suite comprising corner shaped tiled shower with Mira shower unit and clear glass shower door and screen, sliminess W.C., wall mounted shaped wash hand basin with chrome mixer taps and a built-out vanity drawer in white high gloss. Ceiling with spotlights, air ventilator, PVC double glazed patterned glass window to front, stylish vertical radiator.

Mezzanine 8' 9" x 10' minimum (2.67m x 3.05m minimum) A very useful space approached independently from the master bedroom via an open tread spindle balustrade single flight staircase and equipped with a velux double glazed rear window with flooring, a perfect storage area but versatile.



Bedroom Two 12' 1" x 11' 6" (3.68m x 3.51m) Independently approached from the landing and equipped with two further built-in wardrobes one being 5 ft wide x 2 ft deep and enclosed via white panel doors. Radiator, PVC double glazed front window with outlooks across the tree lined front gardens.

Ensuite Shower Room Modern white suite with fully tiled walls and floor comprising shower with rail and curtain over and chrome shower fittings, large, shaped pedestal wash hand basin with chrome mixer taps and pop-up waste, slim line W.C., shaver point, air ventilator, radiator, PVC patterned glass double glazed window to side.

Bedroom Three 9' 9" x 9' 3" (2.97m x 2.82m) Independently approached from the landing, a good size third bedroom with a white PVC double glazed window with a rear garden outlook, built-in airing cupboard housing a factory insulated copper hot water cylinder, radiator.

Bedroom Four 9' 5" x 7' 5" (2.87m x 2.26m) Approached independently from the landing via a white traditional style panel door with an additional entrance recess measuring 1' 4" depth x 2' 8" width. Radiator, PVC double glazed window with a rear garden outlook.



Family Bathroom White suite with part tiled walls and tiled floor comprising stylish Jacuzzi bath with mixer shower fitment, pop-up waste and chrome power jets. W.C., large, shaped pedestal wash hand basin with chrome mixer taps radiator, PVC patterned glass double glazed window to rear.

Outside Front Garden The lawned front garden is divided into two areas - one owned by No 31 and the second section owned by the neighbour. Within this garden are oak trees which have TPO's.

Entrance Drive A double width private Tarmac off street vehicular entrance drive approached via a double width dropped kerb and providing ample parking for four cars, possibly five. Brick edging with integrated lights.

Rear Garden Landscaped and enclosed comprising of an Astro turf lawn beyond a full width paved sun terrace, edged with borders of slate and enclosed for privacy and security by means of timber panel fencing. Within the rear garden there is a very large and useful timber garden shed/summer house with a pitched roof.

Garage 14' 9" x 8' 3" (4.50m x 2.51m) Integral garage approached via a fob operated electronically controlled roller door recently installed. The garage is equipped with electric power and light and partial shelving with an internal courtesy door that leads into the snug.

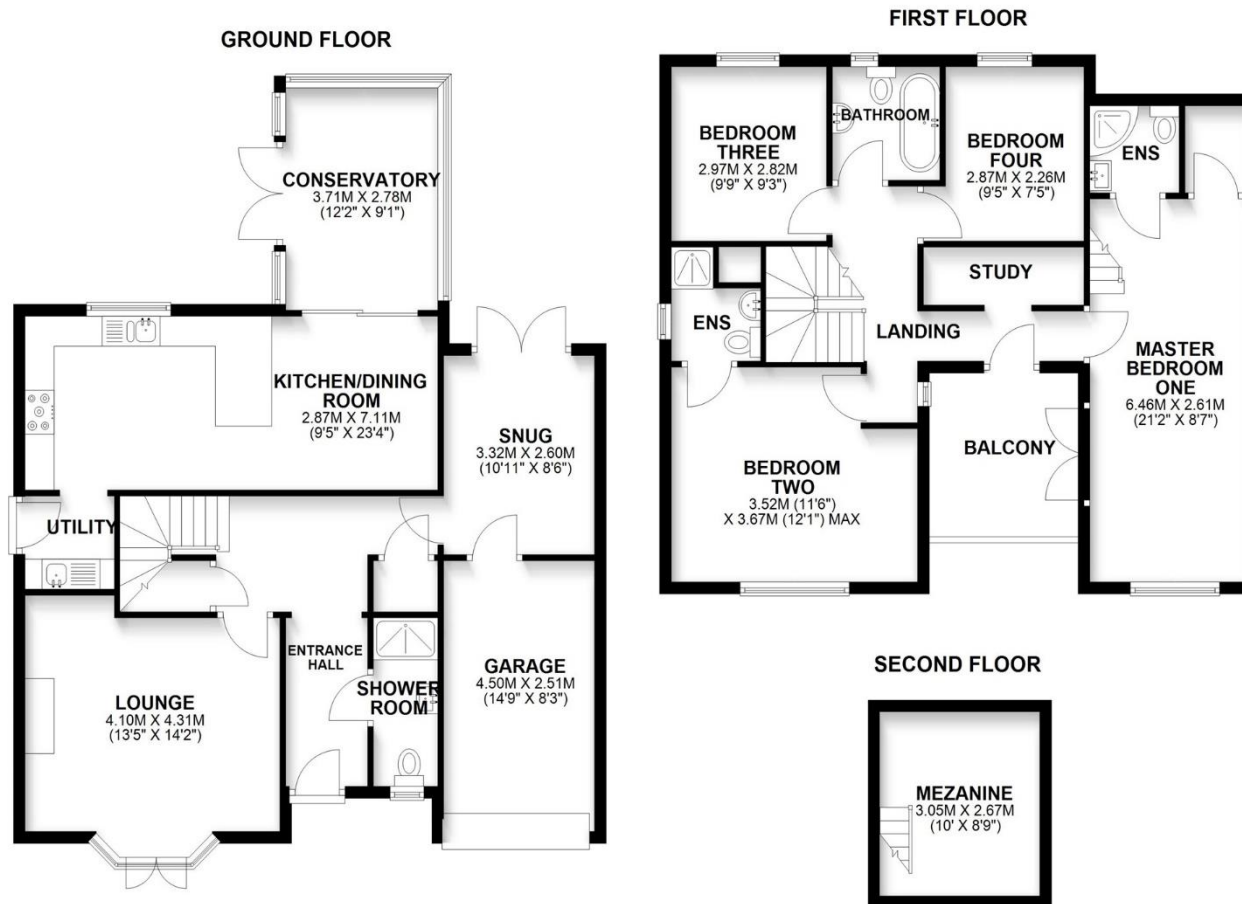






02920 618552

llanishen@peteralan.co.uk



Important Information

Note while we endeavour to make our sales details accurate and reliable, if there is any point which is of particular interest to you, please contact the office and we will be pleased to confirm the position for you. We have not personally tested any apparatus, equipment, fixtures, fittings or services and cannot verify they are in working order or fit for their purposes. Nothing in these particulars is intended to indicate that carpets or curtains, furnishings or fittings, electrical goods (whether wired or not), Gas fires or light fittings or any other fixtures not expressly included form part of the property offered for sale. This computer generated Floorplan, if applicable, is intended as a general guide to the layout and design of the property. It is not to scale and should not be relied upon for dimensions. Tenure: We cannot confirm the tenure of the property as we have not had access to the legal documents. The buyer is advised to obtain verification from their solicitor or surveyor.

Peter Alan Limited is registered in England and Wales under company number 2073153, Registered Office is Cumbria House, 16-20 Hockliffe Street, Leighton Buzzard, Bedfordshire, LU7 1GN. VAT Registration Number is 500 2481 05. For activities relating to regulated mortgages and non-investment insurance contracts, Peter Alan Limited is an appointed representative of Connells Limited which is authorised and regulated by the Financial Conduct Authority. Connells Limited's Financial Services Register number is 302221. Most buy-to-let mortgages are not regulated.

