



## Bardsey Crescent, £325,000

- Three Bedroom Semi-Detached
- Large Private Rear Garden
- Driveway for Two Cars
- Close to Llanishen Village
- South Facing Garden
- Council Tax Band D
- EPC Rating: D



 3  1  2





## About the property

Peter Alan are delighted to offer to the market this beautifully presented three bedroom semi-detached property situated in the popular location of Llanishen.

The accommodation comprises entrance hall, separate lounge, a modern 19ft fitted kitchen/diner with doors onto a beautiful private rear garden and side porch/laundry room to the ground floor. Three bedrooms, bathroom with shower and attic room (without a permanent staircase) to the first floor. Gas heating with a combination boiler, double glazing and a driveway for two cars. Walking distance of shops, schools and public transport.

A must view!



## Accommodation

Hallway

Living Room

Kitchen/Diner

Store Room

Wc

Landing

Bedroom One

Bedroom Two

Bedroom Three

Bathroom

Attic Room

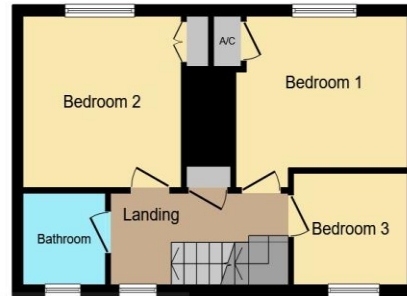
Outside



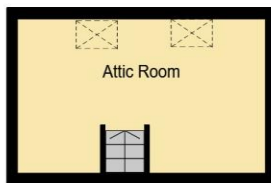
## Floorplan



**Ground Floor**



**First Floor**



**Second Floor**

This floor plan is for illustrative purposes only. It is not drawn to scale. Any measurements, floor areas (including any total floor area), openings and orientation are approximate. No details are guaranteed, they cannot be relied upon for any purpose and they do not form part of any agreement. No liability is taken for any error, omission or misstatement. A party must rely upon its own inspection(s). Powered by [www.focalagent.com](http://www.focalagent.com)

## Important Information

Note while we endeavour to make our sales details accurate and reliable, if there is any point which is of particular interest to you, please contact the office and we will be pleased to confirm the position for you. We have not personally tested any apparatus, equipment, fixtures, fittings or services and cannot verify they are in working order or fit for their purposes. Nothing in these particulars is intended to indicate that carpets or curtains, furnishings or fittings, electrical goods (whether wired or not). Gas fires or light fittings or any other fixtures not expressly included form part of the property offered for sale. This computer generated Floorplan, if applicable, is intended as a general guide to the layout and design of the property. It is not to scale and should not be relied upon for dimensions. Tenure: We cannot confirm the tenure of the property as we have not had access to the legal documents. The buyer is advised to obtain verification from their solicitor or surveyor.

Peter Alan Limited is registered in England and Wales under company number 2073153, Registered Office is Cumbria House, 16-20 Hockliffe Street, Leighton Buzzard, Bedfordshire, LU7 1GN. VAT Registration Number is 500 2481 05. For activities relating to regulated mortgages and non-investment insurance contracts, Peter Alan Limited is an appointed representative of Connells Limited which is authorised and regulated by the Financial Conduct Authority. Connells Limited's Financial Services Register number is 302221. Most buy-to-let