



 3  2  2

Brook Cottage, Cefn Mably Road, Lisvane, Cardiff, CF14 0SP

£550,000

 black

02920 618552
llanishen@peteralan.co.uk



A truly charming and fully improved detached three-bedroom cottage of character, occupying a delightful position fronting Cefn Mably Road, with the special benefits of a very large 100 FT long rear garden, a private front parking drive, and a further side drive with a large detached garage.

Built circa 1890, this substantial period home, includes many original features, modernised in recent years, and providing generous sized rooms, with original fireplaces and doors, together with a cast iron log burner, a fully fitted kitchen, a sunroom conservatory, a separate utility room, two charming living rooms, three double sized bedrooms and two bathrooms, one being ensuite.

This impressive home is available with no chain.

Must be seen.

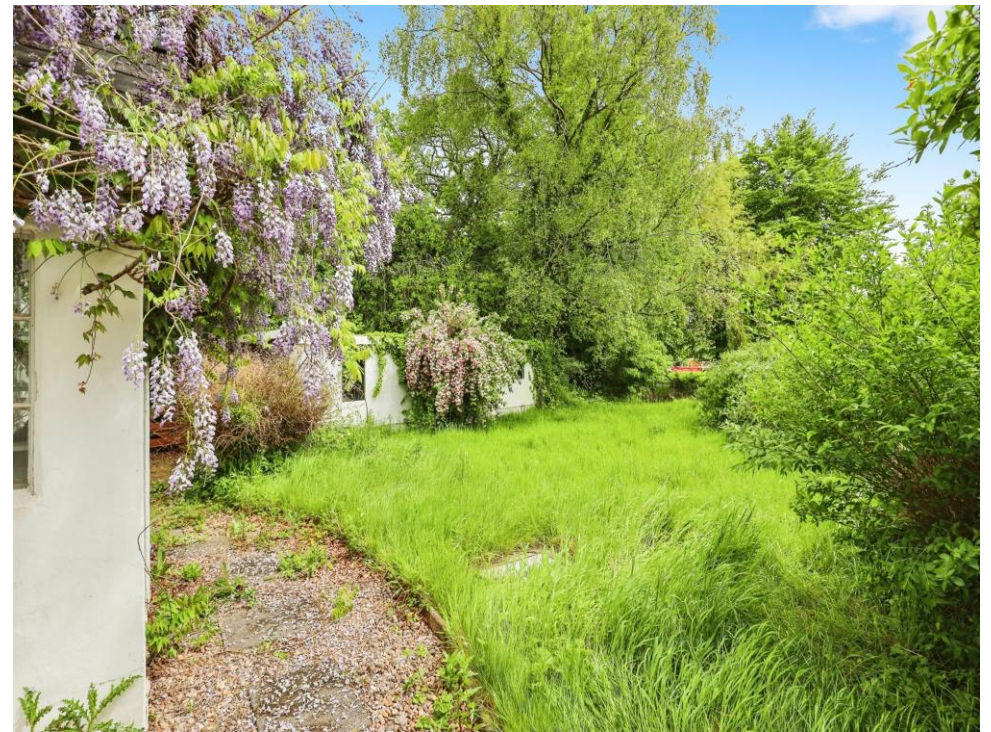
Location

The property is well placed within walking distance to Cefn Onn Country Park, the highly popular Old Cottage Inn and Restaurant, Lisvane Railway Station and the highly regarded Lisvane Primary School.

Also close by is the Treetops Play Group and Acorns Nursery is 1 Mile away. Lisvane is one of the most desirable areas of both Cardiff and Wales, and up to 2011, had an average house price of £410,000 with many properties in excess of £1,000,000.

Lisvane has 3319 residents and comprising approx. of 1700 dwellings. Facilities include a local village shop, hairdressers, a community cabin library, a Pharmacy, a park, a parish church, a war memorial, a scout hall and community/village hall. Lisvane cricket club is based at Llynarthen in nearby St Mellons. Secondary schools locally include Corpus Christie Catholic high School on Ty Draw Road and Llanishen High School on Heol Hir.

There is also an active community association with 29 affiliated groups and the Panthers Football Club which is a major player in South Wales





Sitting Room

14' 11" x 11' 9" (4.55m x 3.58m)

Living Room

14' 11" x 12' 3" (4.55m x 3.73m)

Kitchen

9' 11" x 11' 1" (3.02m x 3.38m)

Utility

9' 11" x 3' 10" (3.02m x 1.17m)

Conservatory

9' 8" x 10' 3" (2.95m x 3.12m)



Wc

First Floor Landing

Bedroom One

14' 11" x 11' 9" (4.55m x 3.58m)

Ensuite

5' 5" x 7' 6" (1.65m x 2.29m)

Bedroom Two

9' 11" x 11' 1" (3.02m x 3.38m)

Bedroom Three

7' 2" x 11' 5" (2.18m x 3.48m)

Bathroom

7' 2" x 8' 9" (2.18m x 2.67m)

Garage

Garden



Lisvane

Within Lisvane are the delightful Coed Y Felin woods providing lovely walks. Coed-y-Felin comprises about 16 acres of semi-ancient and mixed natural woodland in the heart of Lisvane, sandwiched between Heol Cefn Onn (the main entrance), Clos Llyfsaen, Ivydale, Ridgeway and Millrace Close, with entrances in each. The property is well placed within walking distance to Cefn Onn Country Park, the highly popular Old Cottage Inn and Restaurant, Lisvane Railway Station and the highly regarded Lisvane Primary School. Also close by is the Treetops Play Group and Acorns Nursery is 1 Mile away. Lisvane is one of the most desirable areas of both Cardiff and Wales, and up to 2011, had an average house price of £410,000 with many properties in excess of £1,000,000. Lisvane has 3319 residents and comprising approx of 1700 dwellings. Facilities include a local village shop, hairdressers, a community cabin library, a Pharmacy, a park, a parish church, a war memorial, a scout hall and community/village hall. Lisvane cricket club is based at Llynarthen in nearby St Mellons. Secondary schools locally include Corpus Christie Catholic high School on Ty Draw Road and Llanishen High School on Heol Hir. There is also an active community association with 29 affiliated groups and the Panthers Football Club which is a major player in South Wales.

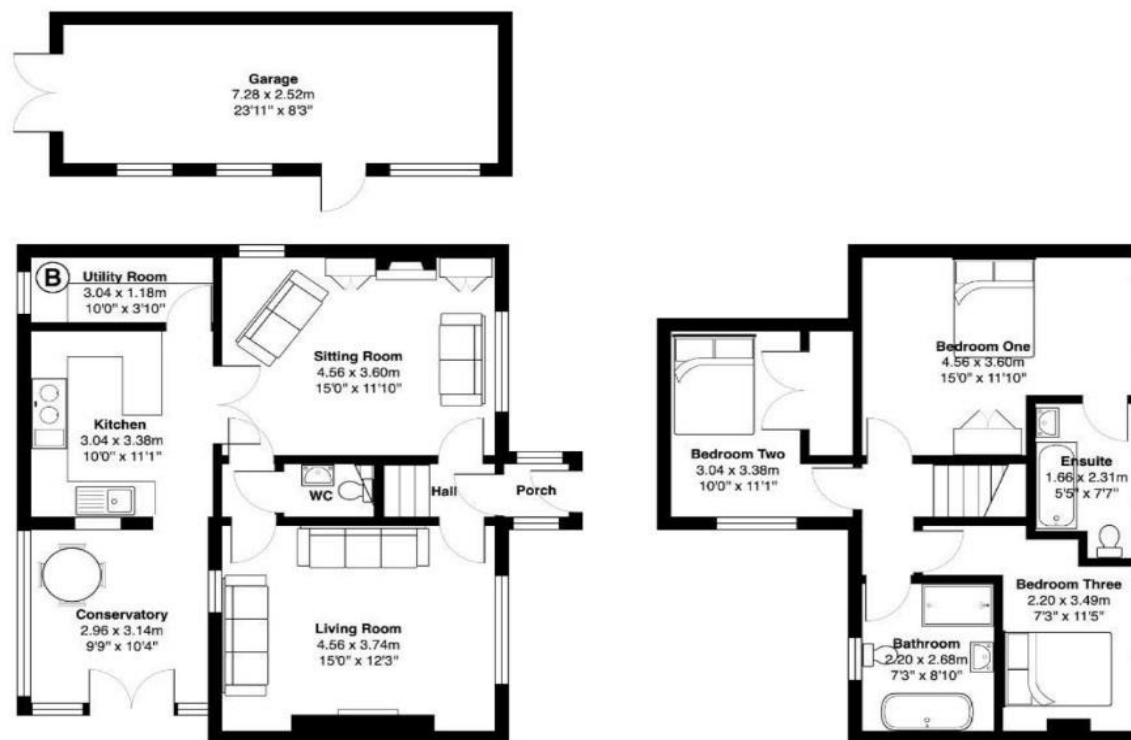






02920 618552

llanishen@peteralan.co.uk



Important Information

Note while we endeavour to make our sales details accurate and reliable, if there is any point which is of particular interest to you, please contact the office and we will be pleased to confirm the position for you. We have not personally tested any apparatus, equipment, fixtures, fittings or services and cannot verify they are in working order or fit for their purposes. Nothing in these particulars is intended to indicate that carpets or curtains, furnishings or fittings, electrical goods (whether wired or not), Gas fires or light fittings or any other fixtures not expressly included form part of the property offered for sale. This computer generated Floorplan, if applicable, is intended as a general guide to the layout and design of the property. It is not to scale and should not be relied upon for dimensions. Tenure: We cannot confirm the tenure of the property as we have not had access to the legal documents. The buyer is advised to obtain verification from their solicitor or surveyor.

Peter Alan Limited is registered in England and Wales under company number 2073153, Registered Office is Cumbria House, 16-20 Hockliffe Street, Leighton Buzzard, Bedfordshire, LU7 1GN. VAT Registration Number is 500 2481 05. For activities relating to regulated mortgages and non-investment insurance contracts, Peter Alan Limited is an appointed representative of Connells Limited which is authorised and regulated by the Financial Conduct Authority. Connells Limited's Financial Services Register number is 302221. Most buy-to-let mortgages are not regulated.

