



Heol Lewis, £170,000

- Ground Floor Maisonette
- Single garage
- Two double bedrooms
- Front and rear gardens
- No chain
- EPC Rating: D

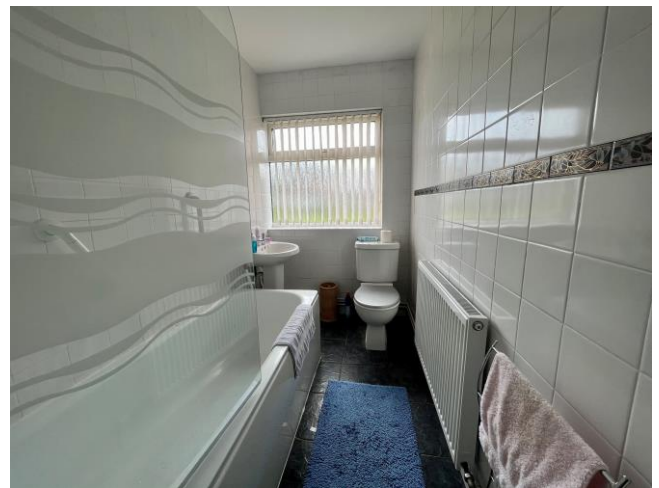


 2  1  1



About the property

Not to be missed is this sizeable two double bedroom ground floor maisonette with its own private front and rear gardens. Benefiting from its own front door, gas heating with a combination boiler, double glazing and single garage. Quiet location and walking distance to local amenities.





Accommodation

Entrance Porch

Accessed via a double glazed door and window, cupboard concealing combination boiler, laminate flooring, door to hallway.

Hallway

Fitted storage cupboard, radiator, woodblock flooring, understair storage cupboard.

Lounge

14' x 11' 6" (4.27m x 3.51m)

Double glazed window to the front, television point, woodblock flooring, coving to ceiling, feature fireplace with tiled hearth.

Kitchen

10' 6" x 8' 1" (3.20m x 2.46m)

Double glazed window to the front, fitted with a modern range of wall and base units, inset sink unit with mixer tap and drainer. Plumbing for washing machine. Inset gas hob and electric oven, larder cupboard, tile effect vinyl flooring.

Bathroom

Double glazed window to the front, a modern three piece suite with panelled bath and mixer tap, shower attachment with shower screen. Pedestal wash hand basin, low level w.c., radiator, fitted storage and tiled flooring.

Bedroom One

12' 7" x 11' 5" (3.84m x 3.48m)

Double glazed window to the rear, fitted wardrobes to one wall, radiator and woodblock flooring.

Bedroom Two

13' x 9' 2" (3.96m x 2.79m)

Double glazed window to the rear, fitted wardrobe to one wall, radiator, woodblock flooring.

Outside

Part lawned front garden, rear enclosed courtyard solely for the use of number 82. Rear access to a SINGLE GARAGE with an up and over metal door.

02920 618552

llanishen@peteralan.co.uk

Floorplan



This floorplan is for illustrative purposes only and is not drawn to scale. Measurements, floor-areas, openings and orientations are approximate. They should not be relied upon for any purpose and do not form any part of an agreement. No liability is taken for any error or mis-statement. All parties must rely on their own inspections.

Important Information

Note while we endeavour to make our sales details accurate and reliable, if there is any point which is of particular interest to you, please contact the office and we will be pleased to confirm the position for you. We have not personally tested any apparatus, equipment, fixtures, fittings or services and cannot verify they are in working order or fit for their purposes. Nothing in these particulars is intended to indicate that carpets or curtains, furnishings or fittings, electrical goods (whether wired or not). Gas fires or light fittings or any other fixtures not expressly included form part of the property offered for sale. This computer generated Floorplan, if applicable, is intended as a general guide to the layout and design of the property. It is not to scale and should not be relied upon for dimensions. Tenure: We cannot confirm the tenure of the property as we have not had access to the legal documents. The buyer is advised to obtain verification from their solicitor or surveyor.

Peter Alan Limited is registered in England and Wales under company number 2073153, Registered Office is Cumbria House, 16-20 Hockliffe Street, Leighton Buzzard, Bedfordshire, LU7 1GN. VAT Registration Number is 500 2481 05. For activities relating to regulated mortgages and non-investment insurance contracts, Peter Alan Limited is an appointed representative of Connells Limited which is authorised and regulated by the Financial Conduct Authority. Connells Limited's Financial Services Register number is 302221. Most buy-to-let