



Cowbridge Road West, guide price £230,000

- Four bedrooms
- Open plan lounge-diner
- Extended family home with two shower rooms
- Council tax band C
- Off road parking for several vehicles
- Front and rear garden
- No Chain
- EPC Rating: C



 4  2  2



About the property

Four bedroom extended family home located in a popular location in Ely Cardiff. Offering open plan living with a spacious lounge diner, shower room to both the ground and first floors and off road parking for several vehicles. This Property needs to be viewed to be appreciated





Accommodation

Entrance

Fitted carpet, radiator, doorway to lounge diner and stairs leading to the first floor with loft access

Lounge

13' 7" x 13' 4" (4.14m x 4.06m)

Fitted carpet, UPVC double glazed window to front aspect, feature fireplace and open to dining area

Diner

13' 5" x 9' 1" (4.09m x 2.77m)

Fitted carpet, UPVC double glazed window to rear aspect and radiator. Door to under stairs storage cupboard and door to kitchen

Kitchen

13' 7" x 9' 9" (4.14m x 2.97m)

With a range of matching wall and base units incorporating worktops space, tiled flooring, UPVC window to front and rear aspect, radiator, space and plumbing for washing machine and dryer, space for freestanding fridge/freezer and space for freestanding cooker, door leading to shower room and door leading to rear garden.

Ground Floor Shower Room

UPVC double glazed window to rear aspect, large walk in shower cubical with electric shower, low level wc and wash hand basin

Bedroom One

14' x 10' (4.27m x 3.05m)

Located to the front aspect of the property with UPVC double glazed window to front aspect, radiator, fitted carpet and built in wardrobes

Bedroom Two

13' 4" x 8' 8" (4.06m x 2.64m)

With two UPVC double glazed windows to both front and rear aspect, fitted carpet and radiator

Bedroom Three

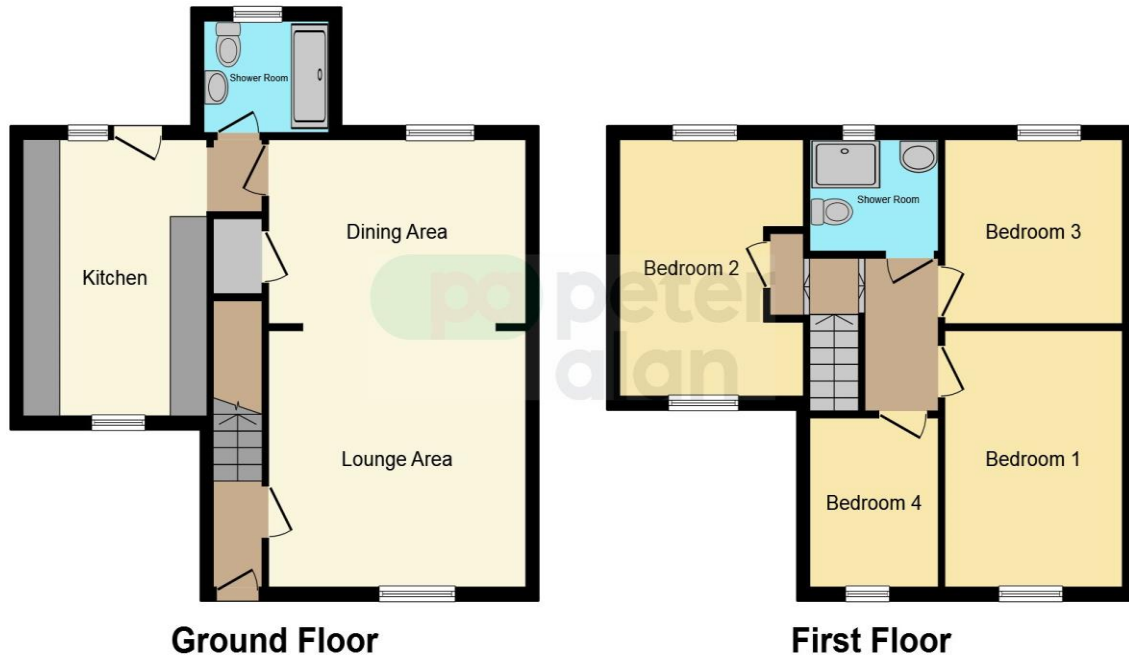
9' 1" x 8' 4" (2.77m x 2.54m)

Located to the rear aspect of the property with UPVC double glazed window, fitted carpet and radiator

Bedroom Four

8' 9" x 6' 4" (2.67m x 1.93m)

Floorplan



This floor plan is for illustrative purposes only. It is not drawn to scale. Any measurements, floor areas (including any total floor area), openings and orientation are approximate. No details are guaranteed, they cannot be relied upon for any purpose and they do not form part of any agreement. No liability is taken for any error, omission or misstatement. A party must rely upon its own inspection(s). Powered by www.focalagent.com

Important Information

Note while we endeavour to make our sales details accurate and reliable, if there is any point which is of particular interest to you, please contact the office and we will be pleased to confirm the position for you. We have not personally tested any apparatus, equipment, fixtures, fittings or services and cannot verify they are in working order or fit for their purposes. Nothing in these particulars is intended to indicate that carpets or curtains, furnishings or fittings, electrical goods (whether wired or not). Gas fires or light fittings or any other fixtures not expressly included form part of the property offered for sale. This computer generated Floorplan, if applicable, is intended as a general guide to the layout and design of the property. It is not to scale and should not be relied upon for dimensions. Tenure: We cannot confirm the tenure of the property as we have not had access to the legal documents. The buyer is advised to obtain verification from their solicitor or surveyor.

Peter Alan Limited is registered in England and Wales under company number 2073153, Registered Office is Cumbria House, 16-20 Hockliffe Street, Leighton Buzzard, Bedfordshire, LU7 1GN. VAT Registration Number is 500 2481 05. For activities relating to regulated mortgages and non-investment insurance contracts, Peter Alan Limited is an appointed representative of Connells Limited which is authorised and regulated by the Financial Conduct Authority. Connells Limited's Financial Services Register number is 302221. Most buy-to-let