



Rookwood Close, offers over £190,000

- council tax band D
- Top floor
- Leasehold
- Two bedrooms
- On street parking
- Communal garden
- Garage
- EPC Rating: D



 2  1  1



About the property

The property comprises of hallway with doors to all rooms, spacious lounge with upvc window to rear. Two double bedrooms, family bathroom and large kitchen. Outside there are communal grounds surrounding the building and a separate garage.

Situated in a very pleasant and quiet cul-de-sac very close to Bishop of Llandaff School. The location will be highly desirable being close to the hustle of Llandaff centre whilst walking distance to the local train station of Fairwater.

Call now to view!



Accommodation

Kitchen

12' 2" x 7' 8" max (3.71m x 2.34m max)

Lounge

16' 8" x 12' (5.08m x 3.66m)

Bedroom One

13' 3" x 9' 9" (4.04m x 2.97m)

Bedroom Two

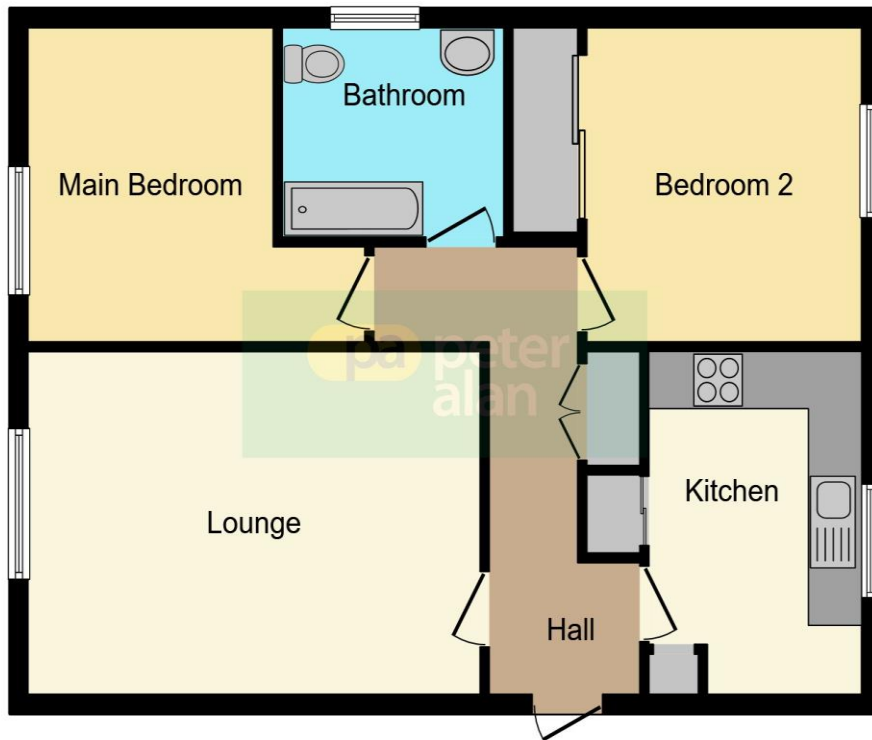
10' 3" x 10' to wardrobe (3.12m x 3.05m to wardrobe)

Bathroom

02920 397077

victoriapark@peteralan.co.uk

Floorplan



This floorplan is for illustrative purposes only and is not drawn to scale. Measurements, floor-areas, openings and orientations are approximate. They should not be relied upon for any purpose and do not form any part of an agreement. No liability is taken for any error or mis-statement. All parties must rely on their own inspections.

Important Information

Note while we endeavour to make our sales details accurate and reliable, if there is any point which is of particular interest to you, please contact the office and we will be pleased to confirm the position for you. We have not personally tested any apparatus, equipment, fixtures, fittings or services and cannot verify they are in working order or fit for their purposes. Nothing in these particulars is intended to indicate that carpets or curtains, furnishings or fittings, electrical goods (whether wired or not). Gas fires or light fittings or any other fixtures not expressly included form part of the property offered for sale. This computer generated Floorplan, if applicable, is intended as a general guide to the layout and design of the property. It is not to scale and should not be relied upon for dimensions. Tenure: We cannot confirm the tenure of the property as we have not had access to the legal documents. The buyer is advised to obtain verification from their solicitor or surveyor.

Peter Alan Limited is registered in England and Wales under company number 2073153, Registered Office is Cumbria House, 16-20 Hockliffe Street, Leighton Buzzard, Bedfordshire, LU7 1GN. VAT Registration Number is 500 2481 05. For activities relating to regulated mortgages and non-investment insurance contracts, Peter Alan Limited is an appointed representative of Connells Limited which is authorised and regulated by the Financial Conduct Authority. Connells Limited's Financial Services Register number is 302221. Most buy-to-let

