



Robert Street guide price £200,000

- COUNCIL TAX - BAND D
- PROBATE HAS BEEN GRANTED
- GUIDE PRICE- £210,000-£220,000
- GARAGE AT THE REAR OF THE PROPERTY.
PRIVATE AND ENCLOSE DREAR GARDEN.
- CLOSE TO LOCAL PRIMARY AND
SECONDARY SCHOOLS
- GOOD LINKS INTO CARDIFF CITY CENTRE
- CLOSE TO LOCAL AMENITIES INCLUDING



 3  1  1



About the property

£200,000-£210,000! This three bedroom mid terrace property located in the popular area of Lower Ely benefits from being within walking distance to local amenities, close to both primary and secondary schools and being close to local transport links in and out of Cardiff City Centre.

Accommodation

Entrance Porch

UPVC double glazed door into entrance porch with tiled flooring and door into hallway.

Entrance Hall

Carpet flooring, wall mounted radiator, staircase to first floor and access to lounge.

Lounge

21' 3" x 11' 9" (6.48m x 3.58m)



Carpet flooring, two chimney breast one with fireplace, wall mounted radiators and UPVC double glazed window to front.

Access from the kitchen, tiled flooring and UPVC double glazed door onto rear garden.

Kitchen

13' 8" x 10' 2" (4.17m x 3.10m)

A range of matching wall and base units with heat resistance work surfaces, incorporating a one and a half stainless steel sink unit with mixer tap and drainer, low level electric oven, four ring gas hob with overhead extractor fan and space for fridge freezer and washing machine. Understair storage cupboard, partly tiled walls, tiled flooring, UPVC double glazed window to side and UPVC double glazed sliding doors leading to the conservatory.

Conservatory

Landing

Carpet flooring, loft access with ladders and access to all first floor rooms.

Bedroom One

13' 9" x 10' 9" (4.19m x 3.28m)

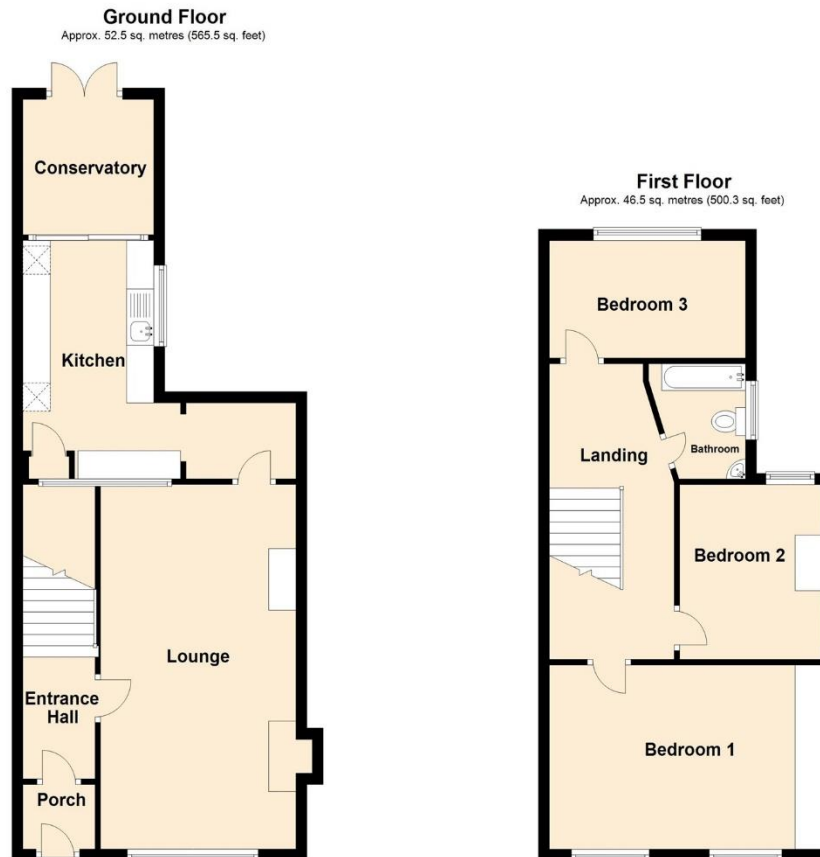
Carpet flooring, three built in wardrobes, wall mounted radiator and two UPVC double glazed windows to front.

Bedroom Two

02920 397077

victoriapark@peteralan.co.uk

Floorplan



Total area: approx. 99.0 sq. metres (1065.8 sq. feet)

Important Information

Note while we endeavour to make our sales details accurate and reliable, if there is any point which is of particular interest to you, please contact the office and we will be pleased to confirm the position for you. We have not personally tested any apparatus, equipment, fixtures, fittings or services and cannot verify they are in working order or fit for their purposes. Nothing in these particulars is intended to indicate that carpets or curtains, furnishings or fittings, electrical goods (whether wired or not). Gas fires or light fittings or any other fixtures not expressly included form part of the property offered for sale. This computer generated Floorplan, if applicable, is intended as a general guide to the layout and design of the property. It is not to scale and should not be relied upon for dimensions. Tenure: We cannot confirm the tenure of the property as we have not had access to the legal documents. The buyer is advised to obtain verification from their solicitor or surveyor.

Peter Alan Limited is registered in England and Wales under company number 2073153, Registered Office is Cumbria House, 16-20 Hockliffe Street, Leighton Buzzard, Bedfordshire, LU7 1GN. VAT Registration Number is 500 2481 05. For activities relating to regulated mortgages and non-investment insurance contracts, Peter Alan Limited is an appointed representative of Connells Limited which is authorised and regulated by the Financial Conduct Authority. Connells Limited's Financial Services Register number is 302221. Most buy-to-let