



Greenland Crescent, guide price £140,000

- COUNCIL TAX BAND - C
- GUIDE PRICE £140,000-£150,000
- OVER 900 YEARS LEFT ON THE LEASE
- GARAGE IN BLOCK
- BALCONY
- CLOSE TO LOCAL PRIMARY AND SECONDARY SCHOOLS
- TWO DOUBLE BEDROOMS
- GOOD TRANSPORT LINKS INCLUDING THE





About the property

Guide Price £140,000-£150,000. Set in a quiet cul-de-sac in a popular area of Fairwater is this spacious first floor apartment, offering spacious living, two double bedrooms, modern fitted kitchen and a bathroom. This apartment is the perfect home for a first time buyer or an investor.

Accommodation

Entrance Hall

Lounge

13' 9" x 13' 9" (4.19m x 4.19m)

Kitchen

17' 3" x 7' 7" (5.26m x 2.31m)

Bedroom One

13' 10" x 13' 4" (4.22m x 4.06m)

Bedroom Two

13' 8" x 8' (4.17m x 2.44m)

Bathroom

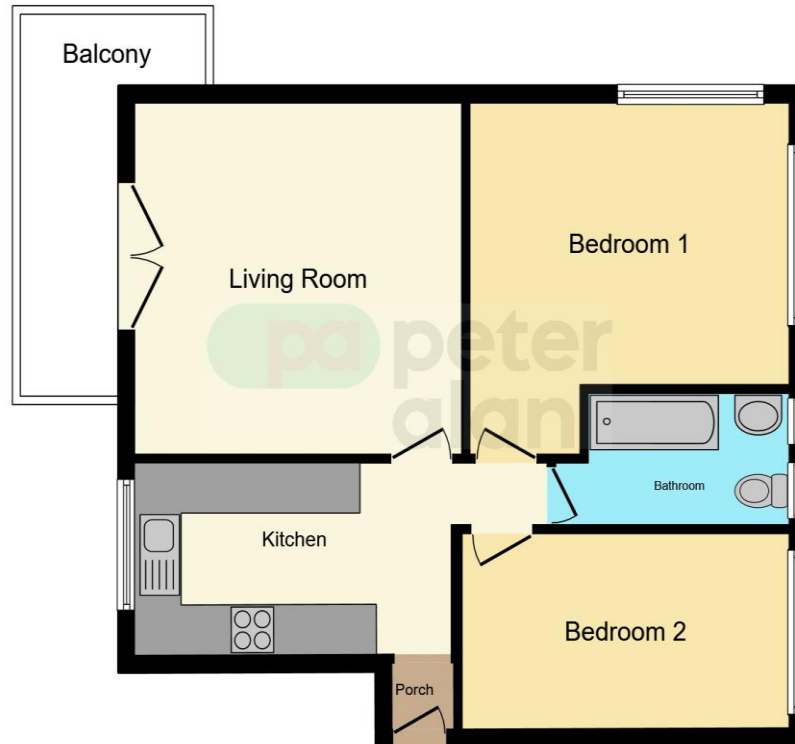
Garage



02920 397077

victoriapark@peteralan.co.uk

Floorplan



This floorplan is for illustrative purposes only and is not drawn to scale. Measurements, floor-areas, openings and orientations are approximate. They should not be relied upon for any purpose and do not form any part of an agreement. No liability is taken for any error or mis-statement. All parties must rely on their own inspections.

Important Information

Note while we endeavour to make our sales details accurate and reliable, if there is any point which is of particular interest to you, please contact the office and we will be pleased to confirm the position for you. We have not personally tested any apparatus, equipment, fixtures, fittings or services and cannot verify they are in working order or fit for their purposes. Nothing in these particulars is intended to indicate that carpets or curtains, furnishings or fittings, electrical goods (whether wired or not). Gas fires or light fittings or any other fixtures not expressly included form part of the property offered for sale. This computer generated Floorplan, if applicable, is intended as a general guide to the layout and design of the property. It is not to scale and should not be relied upon for dimensions. Tenure: We cannot confirm the tenure of the property as we have not had access to the legal documents. The buyer is advised to obtain verification from their solicitor or surveyor.

Peter Alan Limited is registered in England and Wales under company number 2073153, Registered Office is Cumbria House, 16-20 Hockliffe Street, Leighton Buzzard, Bedfordshire, LU7 1GN. VAT Registration Number is 500 2481 05. For activities relating to regulated mortgages and non-investment insurance contracts, Peter Alan Limited is an appointed representative of Connells Limited which is authorised and regulated by the Financial Conduct Authority. Connells Limited's Financial Services Register number is 302221. Most buy-to-let