



Bishop Hannon Drive, guide price £180,000

- COUNCIL TAX - BAND C
- ELECTRIC HEATERS THROUGHOUT- GAS MAINS CAN BE FITTED
- ALLOCATING PARKING SPACE
- TWO RECEPTION ROOMS, TWO BEDROOMS
- CONSERVATORY
- NEAR PUBLIC TRANSPORT FOR BUS ROUTES



 2  1  1



About the property

A two bedroom house in Bishop Hannon Drive, Pentreban. The property comprising of two good size bedrooms, modern three piece suite, good size lounge, kitchen, conservatory, an enclosed private garden and an allocated parking space. The property is ideally located being within walking distance to local amenities, close to local bus routes into Cardiff City Centre and close to both primary and secondary schools.



Accommodation

Entrance Hall

Access from conservatory, access to kitchen and door into lounge.

Lounge

14' 4" x 13' 7" (4.37m x 4.14m)
Laminate flooring, electric fireplace with surround, two wall mounted radiators, staircase to first floor and UPVC double glazed window to front.

Conservatory

11' 8" x 8' 5" (3.56m x 2.57m)
UPVC door to enter with tiled flooring, UPVC double glazed windows to both sides and front and door into entrance hall into property.

Kitchen

12' 4" x 5' 9" (3.76m x 1.75m)
A range of matching wall and base units with heat resistance work surfaces, incorporating a stainless steel sink unit with mixer tap and drainer. space freestanding electric oven and four ring electric hob. Space for washing machine, freezer and built in

fridge, partly tiled walls, laminate flooring, wall mounted radiator and UPVC double glazed window to side.

Landing

Carpet flooring and access to all first floor rooms.

Bedroom One

12' 4" x 10' 4" (3.76m x 3.15m)
Carpet flooring, built in storage cupboard over the stairs, built in wardrobes with sliding mirrored doors, wall mounted radiator and UPVC double glazed window to front.

Bedroom Two

9' 1" x 5' 9" (2.77m x 1.75m)
Carpet flooring and UPVC double glazed window to front.

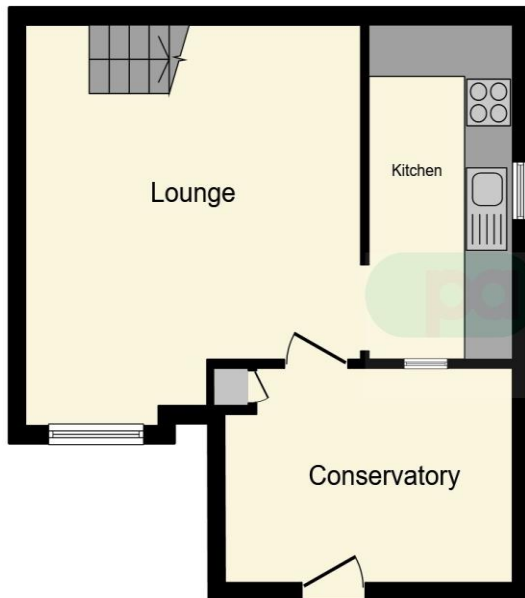
Bathroom

A modern three piece suite comprises of a low level WC, paneled bath with overhead shower and a pedestal wash hand basin. Linoleum flooring, partly tiled walls and UPVC double glazed frosted window

02920 397077

victoriapark@peteralan.co.uk

Floorplan



Ground Floor



First Floor

This floorplan is for illustrative purposes only and is not drawn to scale. Measurements, floor-areas, openings and orientations are approximate. They should not be relied upon for any purpose and do not form any part of an agreement. No liability is taken for any error or mis-statement. All parties must rely on their own inspections.

Important Information

Note while we endeavour to make our sales details accurate and reliable, if there is any point which is of particular interest to you, please contact the office and we will be pleased to confirm the position for you. We have not personally tested any apparatus, equipment, fixtures, fittings or services and cannot verify they are in working order or fit for their purposes. Nothing in these particulars is intended to indicate that carpets or curtains, furnishings or fittings, electrical goods (whether wired or not). Gas fires or light fittings or any other fixtures not expressly included form part of the property offered for sale. This computer generated Floorplan, if applicable, is intended as a general guide to the layout and design of the property. It is not to scale and should not be relied upon for dimensions. Tenure: We cannot confirm the tenure of the property as we have not had access to the legal documents. The buyer is advised to obtain verification from their solicitor or surveyor.

Peter Alan Limited is registered in England and Wales under company number 2073153, Registered Office is Cumbria House, 16-20 Hockliffe Street, Leighton Buzzard, Bedfordshire, LU7 1GN. VAT Registration Number is 500 2481 05. For activities relating to regulated mortgages and non-investment insurance contracts, Peter Alan Limited is an appointed representative of Connells Limited which is authorised and regulated by the Financial Conduct Authority. Connells Limited's Financial Services Register number is 302221. Most buy-to-let

