



Surrey Street, Field

Offers over £165,000

- NO ANNUAL GROUND RENT OR SERVICE CHARGE
- COUNCIL TAX- C
- EPC: CURRENT- E POTENTIAL- C
- MODERN THROUGHOUT
- CLOSE TO LOCAL PRIMARY AND SECONDARY SCHOOLS
- GOOD TRANSPORT LINKS INTO CARDIFF CITY CENTRE



 2  1  1



About the property

A spacious first floor, two bedroom apartment in Surrey Street, Victoria Park. The property offers two bedrooms, a spacious lounge, modern fitted kitchen and bathroom. The property is ideally located in a quiet residential street near Cowbridge Road East, only a minutes' walk to the popular Victoria Park and all local amenities on offer through Canton High Street.



Accommodation

Entrance Hall

Access via wooden door to staircase to first floor apartment with carpet flooring and access to all rooms.

Lounge

11' 1" x 9' 8" (3.38m x 2.95m)

Enter via hallway with carpet flooring, radiator, UPVC double glazed window to rear and access to both bedrooms.

Kitchen

10' 4" x 9' 8" (3.15m x 2.95m)

A range of matching wall and base units with heat resistance work surfaces incorporating a stainless steel sink unit with mixer tap and drainer. Space for fridge freezer, washing machine and a free standing oven and gas hob. UPVC double glazed Velux window to side, UPVC double glazed window to rear, vinyl flooring and radiator.

Bedroom One

11' 1" x 7' 8" (3.38m x 2.34m)

Access from lounge with carpet flooring, radiator, chimney breast and UPVC double glazed window to front.

Bedroom Two

11' 1" x 7' 2" (3.38m x 2.18m)

Access from lounge with carpet flooring, radiator and UPVC double glazed window to front.

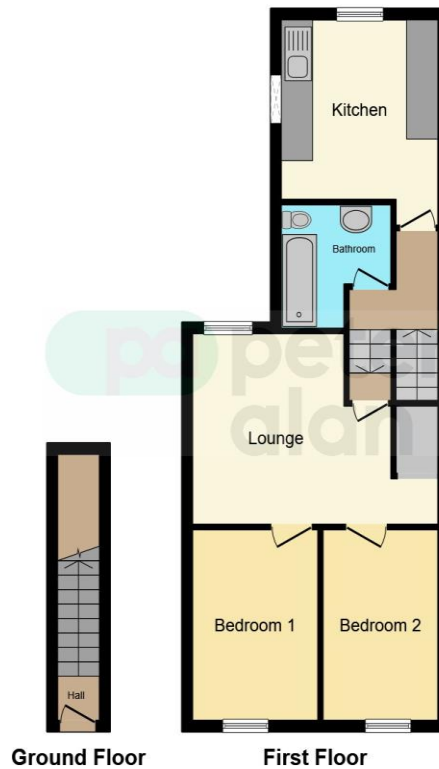
Bathroom

A modern three piece suite comprising of a low level WC, pedestal wash hand basin, panelled bath with overhead shower, partly tiled walls, vinyl flooring, radiator and UPVC double glazed frosted window to side.

02920 397077

victoriapark@peteralan.co.uk

Floorplan



This floorplan is for illustrative purposes only and is not drawn to scale. Measurements, floor-areas, openings and orientations are approximate. They should not be relied upon for any purpose and do not form any part of an agreement. No liability is taken for any error or mis-statement. All parties must rely on their own inspections.

Important Information

Note while we endeavour to make our sales details accurate and reliable, if there is any point which is of particular interest to you, please contact the office and we will be pleased to confirm the position for you. We have not personally tested any apparatus, equipment, fixtures, fittings or services and cannot verify they are in working order or fit for their purposes. Nothing in these particulars is intended to indicate that carpets or curtains, furnishings or fittings, electrical goods (whether wired or not). Gas fires or light fittings or any other fixtures not expressly included form part of the property offered for sale. This computer generated Floorplan, if applicable, is intended as a general guide to the layout and design of the property. It is not to scale and should not be relied upon for dimensions. Tenure: We cannot confirm the tenure of the property as we have not had access to the legal documents. The buyer is advised to obtain verification from their solicitor or surveyor.

Peter Alan Limited is registered in England and Wales under company number 2073153. Registered Office is Cumbria House, 16-20 Hockliffe Street, Leighton Buzzard, Bedfordshire, LU7 1GN. VAT Registration Number is 500 2481 05. For activities relating to regulated mortgages and non-investment insurance contracts, Peter Alan Limited is an appointed representative of Connells Limited which is authorised and regulated by the Financial Conduct Authority. Connells Limited's Financial Services Register number is 302221. Most buy-to-let