



Wilson Place, ##Invalid guide price £240,000

- MOVE IN READY
- COUNCIL TAX B
- NO ONWARDS CHAIN!!
- OFF ROAD PARKING TO THE FRONT
- RECENTLY RENOVATED THROUGHOUT
- A SHORT WALK TO LOCAL PRIMARY AND SECONDARY SCHOOLS
- CLOSE TO CULVERHOUSE CROSS AND LOCAL TRANSPORT LINKS INCLUDING THE



 3  1  2



About the property

Located in a quite cul-de-sac, this semi detached property has three bedrooms and has a modern finish throughout. Off-road private parking and spacious living. Within walking distance of local amenities, primary and secondary schools, bus routes and commutes.

Accommodation

Entrance Porch

PVC door to enter, partly tiled walls, carpet.

Entrance Hall

Carpet, Radiator, Staircase to First floor.

Cloakroom

Low level WC, wash hand basin, UPVC double glazed window to side.



Lounge

15' 4" x 13' 4" max (4.67m x 4.06m max)

Carpet, chimney breast, UPVC double glazed window to front, electric fireplace. Access to kitchen.

Kitchen

18' 7" x 10' 9" (5.66m x 3.28m)

Matching wall and base units, Intergrated fridge freezer and dishwasher. Heat resistance work surfaces. 5 ring gas hob with overhead extraction, sink drainer/mixer tap, tiled flooring. UPVC double glazed window to side. Wall mounted vertical radiator, Eye level oven. tiled flooring. UPVC double glazed french doors to garden. Access to utility room. Space for dining table.



Utility Room

Room off the downstairs toilet, space for washing machine and tumble dryer.

Landing

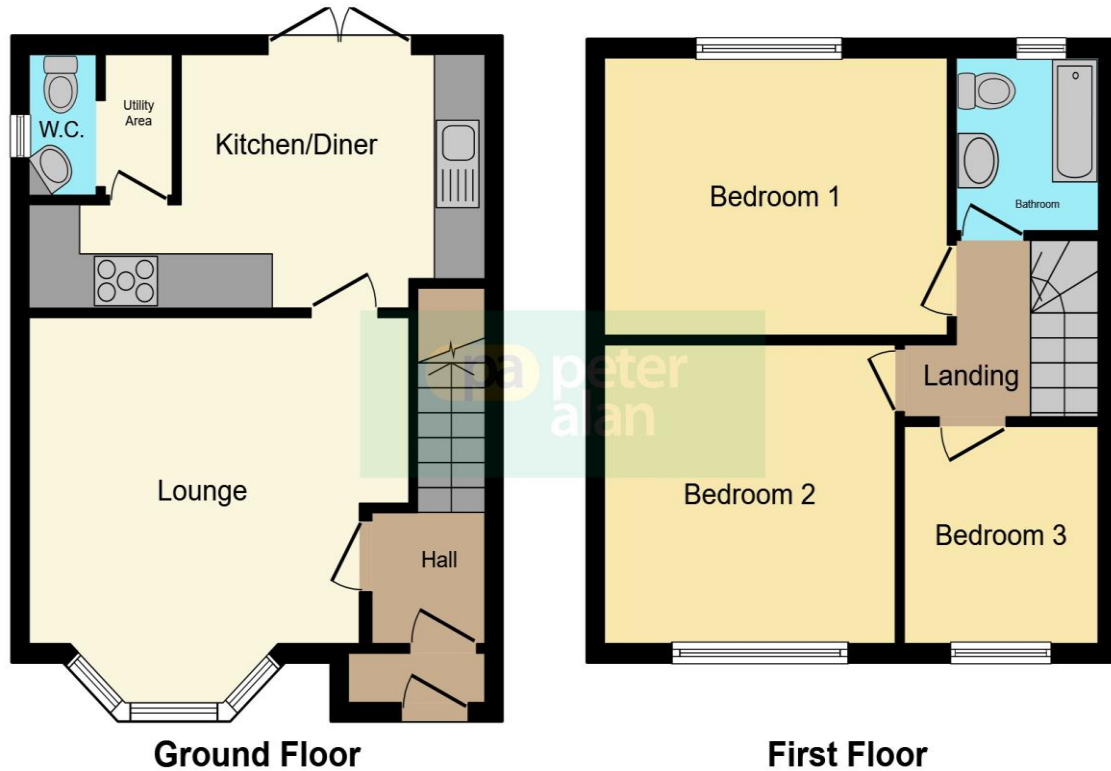
Carpet, Access to all first floor rooms, loft access.

Bedroom One

12' 9" x 10' 2" max (3.89m x 3.10m max)

Carpet, UPVC double glazed window to rear, radiator, built in

Floorplan



This floorplan is for illustrative purposes only and is not drawn to scale. Measurements, floor-areas, openings and orientations are approximate. They should not be relied upon for any purpose and do not form any part of an agreement. No liability is taken for any error or mis-statement. All parties must rely on their own inspections.

Important Information

Note while we endeavour to make our sales details accurate and reliable, if there is any point which is of particular interest to you, please contact the office and we will be pleased to confirm the position for you. We have not personally tested any apparatus, equipment, fixtures, fittings or services and cannot verify they are in working order or fit for their purposes. Nothing in these particulars is intended to indicate that carpets or curtains, furnishings or fittings, electrical goods (whether wired or not). Gas fires or light fittings or any other fixtures not expressly included form part of the property offered for sale. This computer generated Floorplan, if applicable, is intended as a general guide to the layout and design of the property. It is not to scale and should not be relied upon for dimensions. Tenure: We cannot confirm the tenure of the property as we have not had access to the legal documents. The buyer is advised to obtain verification from their solicitor or surveyor.

Peter Alan Limited is registered in England and Wales under company number 2073153, Registered Office is Cumbria House, 16-20 Hockliffe Street, Leighton Buzzard, Bedfordshire, LU7 1GN. VAT Registration Number is 500 2481 05. For activities relating to regulated mortgages and non-investment insurance contracts, Peter Alan Limited is an appointed representative of Connells Limited which is authorised and regulated by the Financial Conduct Authority. Connells Limited's Financial Services Register number is 302221. Most buy-to-let