



## Restway Court offers over £80,000

- COUNCIL TAX BAND B
- EPC- C
- COMMUNAL AREAS SUCH AS LOUNGE, LAUNDRY ROOM AND GARDENS
- LIFT ACCESS, PRIVATE PARKING FOR RESTWAYS COURT
- SECURE KEY FOB ENTRY SYSTEM
- NEXT TO CONVENIENT STORES AND DANESCOURT POST OFFICE.





## About the property

Situated in Danescourt, this one bed first floor retirement apartment is minutes away from local amenities and bus routes. The property benefits from a secure key fob intercom access and benefits from private parking, a communal lounge, lift access, a laundry room and communal gardens.

## Accommodation

### Communal Entrance

A secure key fob and intercom entrance system with direct access to the lift and hallway to communal lounge, laundry room and communal gardens

### Entrance Hall

Enter via wooden door with carpet flooring, airing cupboard with storage, loft access and access to all rooms.

### Lounge

18' x 10' 3" ( 5.49m x 3.12m )



A light and spacious lounge with carpet flooring, electric storage heater, electric feature fireplace, space for dining room table and chairs, access to the kitchen and upvc double glazed window to front.

With tiled flooring, paneled bath with mixer taps, wash hand basin with vanity unit, low level wc and partially tiled walls.

### **Kitchen**

8' x 4' 11" max ( 2.44m x 1.50m max )

A fitted kitchen laminate flooring, space for fridge freezer, a range of matching wall and base units, tiled walls, integral electric oven and four ring neff hob, chrome sink with mixer tap and drainer.

### **Bedroom**

13' 10" x 9' 1" ( 4.22m x 2.77m )

A spacious double bedroom with carpet flooring, space for wardrobes and be side tables, built in storage and upvc double glazed window to side.

### **Bathroom**

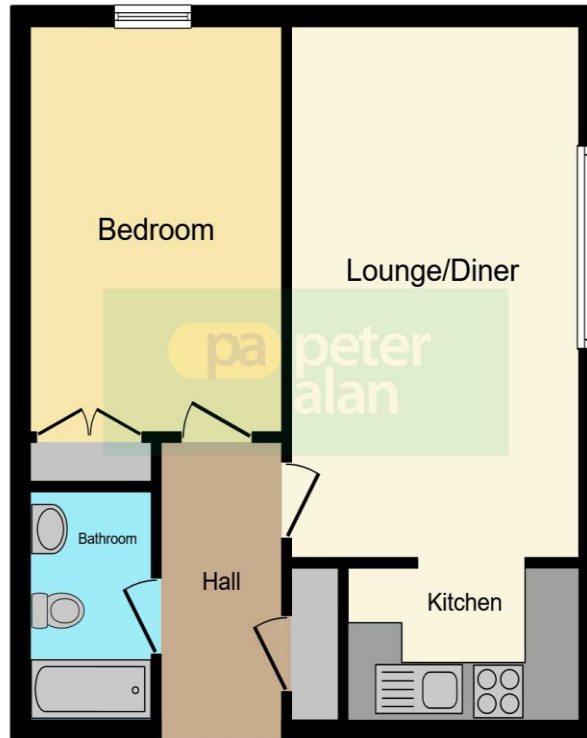
### **Outside The Property**

Restways Court is set back from the road with private parking for residents and visitors to the front, communal gardens and private green space surround the development.

02920 397077

victoriapark@peteralan.co.uk

## Floorplan



This floorplan is for illustrative purposes only and is not drawn to scale. Measurements, floor-areas, openings and orientations are approximate. They should not be relied upon for any purpose and do not form any part of an agreement. No liability is taken for any error or mis-statement. All parties must rely on their own inspections.

## Important Information

Note while we endeavour to make our sales details accurate and reliable, if there is any point which is of particular interest to you, please contact the office and we will be pleased to confirm the position for you. We have not personally tested any apparatus, equipment, fixtures, fittings or services and cannot verify they are in working order or fit for their purposes. Nothing in these particulars is intended to indicate that carpets or curtains, furnishings or fittings, electrical goods (whether wired or not). Gas fires or light fittings or any other fixtures not expressly included form part of the property offered for sale. This computer generated Floorplan, if applicable, is intended as a general guide to the layout and design of the property. It is not to scale and should not be relied upon for dimensions. Tenure: We cannot confirm the tenure of the property as we have not had access to the legal documents. The buyer is advised to obtain verification from their solicitor or surveyor.

Peter Alan Limited is registered in England and Wales under company number 2073153, Registered Office is Cumbria House, 16-20 Hockliffe Street, Leighton Buzzard, Bedfordshire, LU7 1GN. VAT Registration Number is 500 2481 05. For activities relating to regulated mortgages and non-investment insurance contracts, Peter Alan Limited is an appointed representative of Connells Limited which is authorised and regulated by the Financial Conduct Authority. Connells Limited's Financial Services Register number is 302221. Most buy-to-let