



## Windlass Court, fixed price £170,000

- Council Tax Band - D
- Two Bedrooms
- Allocated Parking
- Close to Cardiff City Centre
- Close to Cardiff Bay
- EPC Rating: C



 2  1  1



## About the property

Located just a short drive from Cardiff City Centre and Cardiff Bay is this two bedroom NO CHAIN flat within the popular development of Windlass Court! Located just a short drive and in walking distance from Cardiff City Centre and Cardiff Bay! Situated within close proximity to the Red Dragon Centre and St. David's Shopping Centre this property has great access to local amenities and local attractions! Internally the property comprises communal entrance with access to flat, entrance hallway, lounge, kitchen, two bedrooms and bathroom. The property further benefits from allocated parking, visitor bays, communal grounds and public paths surrounding property for lovely walks. Viewings are highly recommended for this property. To book call 02920397171 or book via our website [www.peteralan.co.uk](http://www.peteralan.co.uk).

## Accommodation

### Communal Entrance

### Hallway

### Lounge

13' 1" max plus bay x 16' max ( 3.99m max plus bay x 4.88m max )

### Kitchen

10' 5" x 12' ( 3.17m x 3.66m )

### Master Bedroom

13' 3" x 10' 5" ( 4.04m x 3.17m )

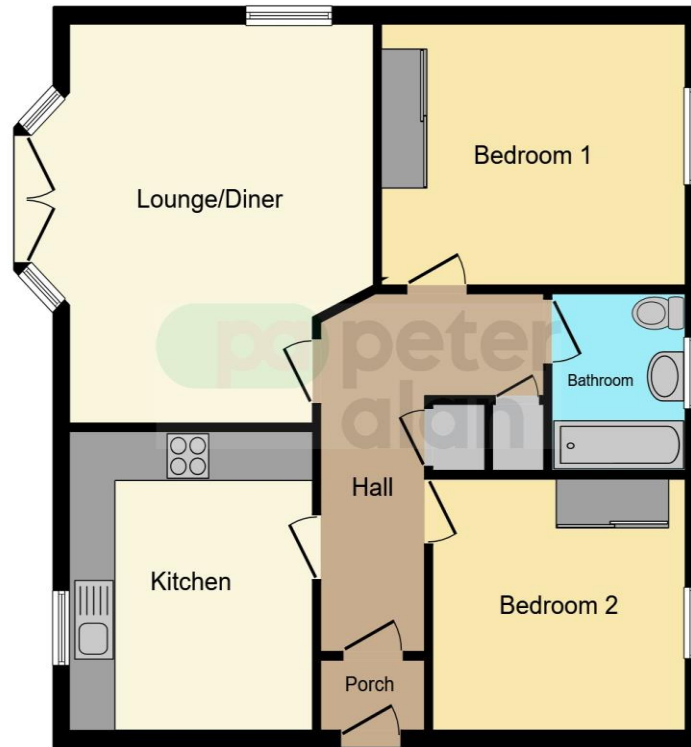
### Bedroom Two

9' 2" x 10' 1" ( 2.79m x 3.07m )



**Bathroom**

## Floorplan



This floorplan is for illustrative purposes only and is not drawn to scale. Measurements, floor-areas, openings and orientations are approximate. They should not be relied upon for any purpose and do not form any part of an agreement. No liability is taken for any error or mis-statement. All parties must rely on their own inspections.

## Important Information

Note while we endeavour to make our sales details accurate and reliable, if there is any point which is of particular interest to you, please contact the office and we will be pleased to confirm the position for you. We have not personally tested any apparatus, equipment, fixtures, fittings or services and cannot verify they are in working order or fit for their purposes. Nothing in these particulars is intended to indicate that carpets or curtains, furnishings or fittings, electrical goods (whether wired or not). Gas fires or light fittings or any other fixtures not expressly included form part of the property offered for sale. This computer generated Floorplan, if applicable, is intended as a general guide to the layout and design of the property. It is not to scale and should not be relied upon for dimensions. Tenure: We cannot confirm the tenure of the property as we have not had access to the legal documents. The buyer is advised to obtain verification from their solicitor or surveyor.

Peter Alan Limited is registered in England and Wales under company number 2073153, Registered Office is Cumbria House, 16-20 Hockliffe Street, Leighton Buzzard, Bedfordshire, LU7 1GN. VAT Registration Number is 500 2481 05. For activities relating to regulated mortgages and non-investment insurance contracts, Peter Alan Limited is an appointed representative of Connells Limited which is authorised and regulated by the Financial Conduct Authority. Connells Limited's Financial Services Register number is 302221. Most buy-to-let