

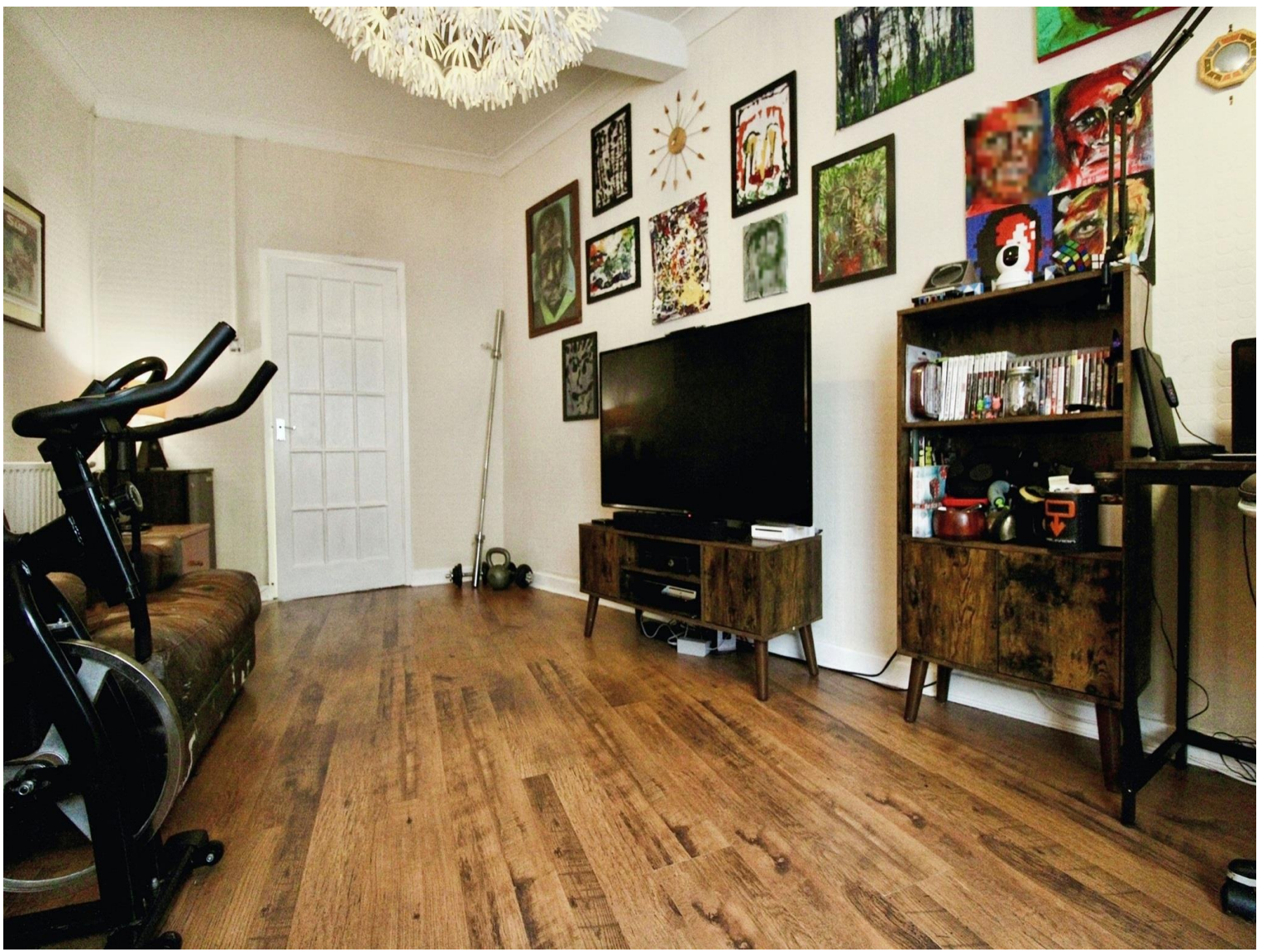


Craddock Street, £210,000

- Council Tax Band - C
- Two Bedrooms
- NO CHAIN
- Courtyard Garden
- Close to City Centre
- EPC Rating: D



 2  1  1



About the property

Located in the popular area of Riverside within Cardiff is this two bedroom end terrace property being sold with NO ONGOING CHAIN! Situated within walking distance to all local shops, schools, restaurants and transport links, everything you need is on your doorstep! The property further benefits from being close to local attractions such as Cardiff City Centre and Principality Stadium. Internally the property comprises entrance hall, kitchen, bathroom and lounge. To the first floor are two bedrooms. To the rear of the property is an enclosed low maintenance courtyard garden. Viewings are highly recommended for this property. To book call 02920397171 or book via our website www.peteralan.co.uk.

Accommodation

Entrance Hall

uPVC window. Storage, Laminate.

Lounge

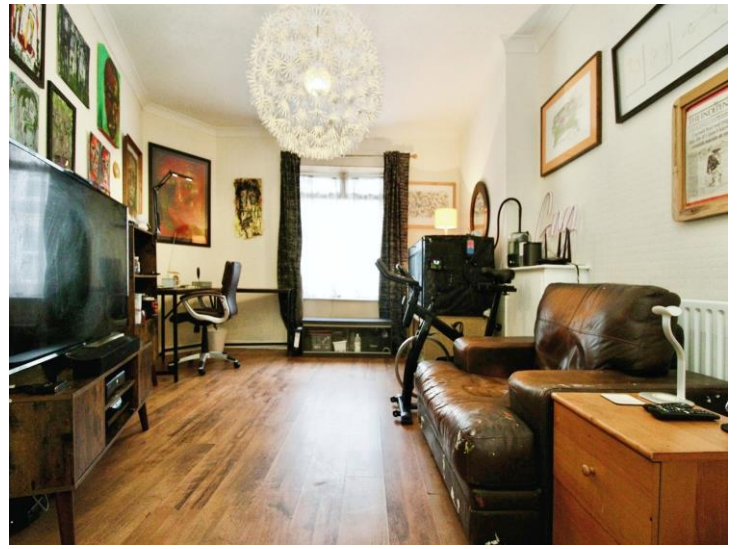
Irregular Shaped Room 13' 8" max x 17' 1" max (4.17m max x 5.21m)

uPVC window. Laminate.

Kitchen

Irregular Shaped Room 11' 8" max x 12' 5" max (3.56m max x 3.78m)

Fitted with matching wall and base units with worktop space over. Insert stainless steel sink with mixer tap. Space for washing machine/dryer, fridge/freezer and integrated oven/hob. Tiles. Access to bathroom.



Landing

Access to bedrooms. Fitted carpet. uPVC window. Loft access.

Bedroom One

Irregular Shaped Room 13' 1" max x 17' 7" max (3.99m max x 5.36m)

Fitted carpet. uPVC windows.

Bedroom Two

Irregular Shaped Room 9' 8" x 9' 8" (2.95m x 2.95m)

Fitted carpet. uPVC window.

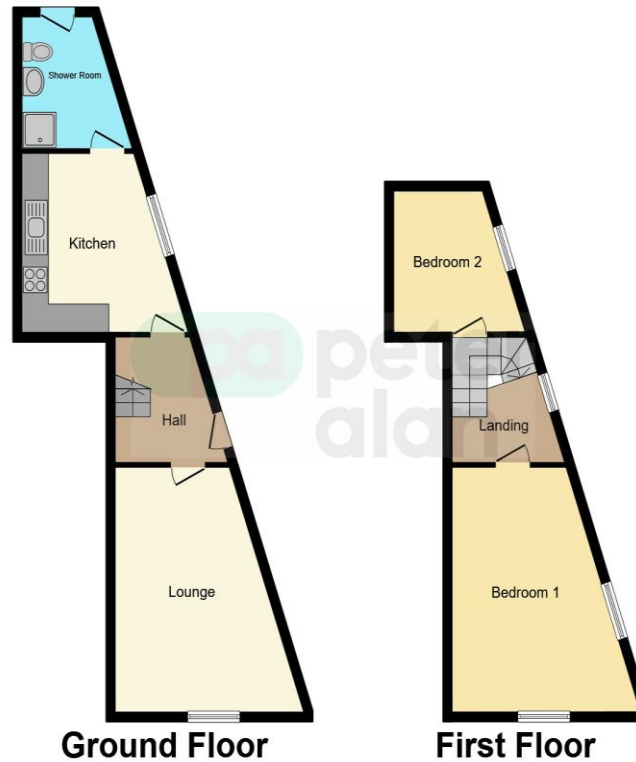
Bathroom

Fitted with three piece suite comprising shower, wash hand basin and wc.

Rear Garden

Low maintenance courtyard garden.

Floorplan



This floorplan is for illustrative purposes only and is not drawn to scale. Measurements, floor-areas, openings and orientations are approximate. They should not be relied upon for any purpose and do not form any part of an agreement. No liability is taken for any error or mis-statement. All parties must rely on their own inspections.

Important Information

Note while we endeavour to make our sales details accurate and reliable, if there is any point which is of particular interest to you, please contact the office and we will be pleased to confirm the position for you. We have not personally tested any apparatus, equipment, fixtures, fittings or services and cannot verify they are in working order or fit for their purposes. Nothing in these particulars is intended to indicate that carpets or curtains, furnishings or fittings, electrical goods (whether wired or not). Gas fires or light fittings or any other fixtures not expressly included form part of the property offered for sale. This computer generated Floorplan, if applicable, is intended as a general guide to the layout and design of the property. It is not to scale and should not be relied upon for dimensions. Tenure: We cannot confirm the tenure of the property as we have not had access to the legal documents. The buyer is advised to obtain verification from their solicitor or surveyor.

Peter Alan Limited is registered in England and Wales under company number 2073153, Registered Office is Cumbria House, 16-20 Hockliffe Street, Leighton Buzzard, Bedfordshire, LU7 1GN. VAT Registration Number is 500 2481 05. For activities relating to regulated mortgages and non-investment insurance contracts, Peter Alan Limited is an appointed representative of Connells Limited which is authorised and regulated by the Financial Conduct Authority. Connells Limited's Financial Services Register number is 302221. Most buy-to-let