



Gwyn Street, £180,000

- Well Presented Home
- Enclosed Rear Garden
- Bathroom & WC
- Village Location
- Council Tax Band - B
- EPC Rating: C



 3  1  2



About the property

****Charming Three-Bedroom Semi-Detached Home in Sought-After Alltwen Village****

****The seller has had plans drawn up for a single story extension to the rear garden that are available to see subject to planning****

Welcome to this delightful three-bedroom semi-detached house, perfectly situated in the highly desirable village of Alltwen. This property offers the ideal blend of village charm and convenient access, with local amenities, reputable schools, and the M4 corridor all within easy reach, making it an excellent choice for first-time buyers or growing families. Step inside to discover a versatile layout with two spacious reception rooms on the ground floor, providing ample space for both relaxation and entertaining. The generous-sized conservatory at the rear floods the home with natural light, creating a warm and inviting atmosphere, perfect for enjoying the changing seasons year-round.

Upstairs, you'll find three well-proportioned bedrooms, complemented by a convenient WC for added comfort and functionality.

Outside, the enclosed rear garden offers a private retreat, perfect for unwinding or as a play area for children. Whether you're hosting a barbecue or simply soaking up the sun, this outdoor space is designed for easy enjoyment.

This property truly offers a versatile living experience, combining comfort, convenience, and the potential to adapt to your lifestyle needs.

Accommodation

Entrance Hall

Living Room

12' 2" Max x 11' 5" (3.71m Max x 3.48m)

Sitting Room

9' 5" Max x 9' 8" (2.87m Max x 2.95m)

Hallway

Kitchen

9' 5" x 7' 5" (2.87m x 2.26m)



Bedroom One

14' 4" Max x 9' 3" Max (4.37m Max x 2.82m Max)

Bedroom Two

15' 1" Max x 9' 2" Max (4.60m Max x 2.79m Max)

Conservatory

13' 8" x 11' 8" (4.17m x 3.56m)

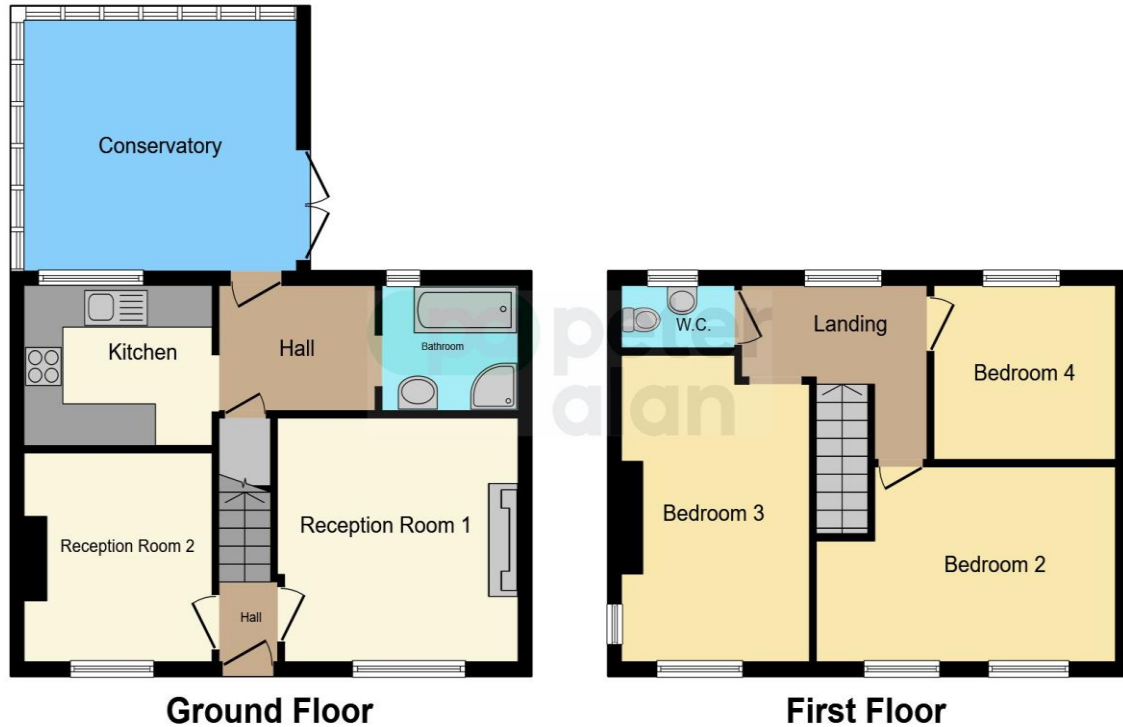
Bathroom

Landing

01792 798201

morrison@peteralan.co.uk

Floorplan



This floor plan is for illustrative purposes only. It is not drawn to scale. Any measurements, floor areas (including any total floor area), openings and orientation are approximate. No details are guaranteed, they cannot be relied upon for any purpose and they do not form part of any agreement. No liability is taken for any error, omission or misstatement. A party must rely upon its own inspection(s). Powered by www.focalagent.com

Important Information

Note while we endeavour to make our sales details accurate and reliable, if there is any point which is of particular interest to you, please contact the office and we will be pleased to confirm the position for you. We have not personally tested any apparatus, equipment, fixtures, fittings or services and cannot verify they are in working order or fit for their purposes. Nothing in these particulars is intended to indicate that carpets or curtains, furnishings or fittings, electrical goods (whether wired or not). Gas fires or light fittings or any other fixtures not expressly included form part of the property offered for sale. This computer generated Floorplan, if applicable, is intended as a general guide to the layout and design of the property. It is not to scale and should not be relied upon for dimensions. Tenure: We cannot confirm the tenure of the property as we have not had access to the legal documents. The buyer is advised to obtain verification from their solicitor or surveyor.

Peter Alan Limited is registered in England and Wales under company number 2073153, Registered Office is Cumbria House, 16-20 Hockliffe Street, Leighton Buzzard, Bedfordshire, LU7 1GN. VAT Registration Number is 500 2481 05. For activities relating to regulated mortgages and non-investment insurance contracts, Peter Alan Limited is an appointed representative of Connells Limited which is authorised and regulated by the Financial Conduct Authority. Connells Limited's Financial Services Register number is 302221. Most buy-to-let