



## Jasmine Drive, £300,000

- Four Bedrooms
- Semi - Detached
- Driveway
- Close to Hendre Lake
- Close to Amenities
- Private Rear Garden
- EPC Rating: C



 4  1  1





## About the property

Discover the perfect blend of comfort and potential with this charming four-bedroom semi-detached bungalow located in the desirable area of St Mellon's, Cardiff. This inviting home features an open-plan kitchen and lounge, creating a spacious and airy atmosphere ideal for both relaxation and entertaining. With two well-proportioned bedrooms conveniently located on the ground floor, along with a modern downstairs shower room, this layout is perfect for families or those looking to accommodate guests with ease.

Venture upstairs to find two additional bedrooms, providing ample space for a growing family or the opportunity to create a home office or hobby room. The upstairs bathroom is designed for convenience, ensuring that morning routines run smoothly. This property is a blank canvas, allowing first-time buyers to infuse their personal style and make it truly their own. The potential for customization is limitless, making it an exciting opportunity for those looking to invest in their future.

Situated in a vibrant community, this home is just a stone's throw away from local shops and essential amenities, ensuring that everything you need is within easy reach. Excellent public transport links further enhance the appeal, making commuting a breeze. Don't miss out on the chance to own this delightful property in St Mellon's—schedule a viewing today and start envisioning your new life in this wonderful





## Accommodation

### **Kitchen**

11' 6" Max x 8' 6" Max ( 3.51m Max x 2.59m Max )

### **Lounge**

22' 4" Max x 10' 3" Max ( 6.81m Max x 3.12m Max )

### **Bedroom Four**

11' 3" Max x 9' Max ( 3.43m Max x 2.74m Max )

### **Bedroom Three**

12' 1" Max x 10' 8" Max ( 3.68m Max x 3.25m Max )

### **Bedroom Two**

13' 1" Max x 6' 7" Max ( 3.99m Max x 2.01m Max )

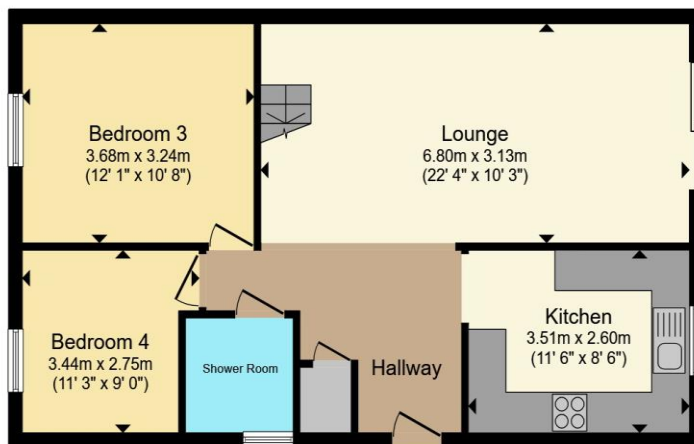
### **Bedroom One**

17' 2" Max x 8' 4" Max ( 5.23m Max x 2.54m Max )

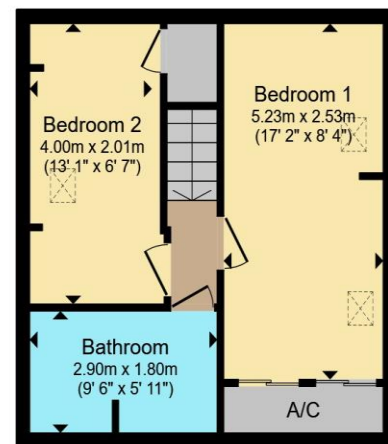
02920 792888

rumney@peteralan.co.uk

## Floorplan



Ground Floor



First Floor

Total floor area 97.7 m<sup>2</sup> (1,052 sq.ft.) approx

This floor plan is for illustrative purposes only. It is not drawn to scale. Any measurements, floor areas (including any total floor area), openings and orientation are approximate. No details are guaranteed, they cannot be relied upon for any purpose and they do not form part of any agreement. No liability is taken for any error, omission or misstatement. A party must rely upon its own inspection(s). Powered by [www.propertybox.io](http://www.propertybox.io)



## Important Information

Note while we endeavour to make our sales details accurate and reliable, if there is any point which is of particular interest to you, please contact the office and we will be pleased to confirm the position for you. We have not personally tested any apparatus, equipment, fixtures, fittings or services and cannot verify they are in working order or fit for their purposes. Nothing in these particulars is intended to indicate that carpets or curtains, furnishings or fittings, electrical goods (whether wired or not). Gas fires or light fittings or any other fixtures not expressly included form part of the property offered for sale. This computer generated Floorplan, if applicable, is intended as a general guide to the layout and design of the property. It is not to scale and should not be relied upon for dimensions. Tenure: We cannot confirm the tenure of the property as we have not had access to the legal documents. The buyer is advised to obtain verification from their solicitor or surveyor.

Peter Alan Limited is registered in England and Wales under company number 2073153, Registered Office is Cumbria House, 16-20 Hockliffe Street, Leighton Buzzard, Bedfordshire, LU7 1GN. VAT Registration Number is 500 2481 05. For activities relating to regulated mortgages and non-investment insurance contracts, Peter Alan Limited is an appointed representative of Connells Limited which is authorised and regulated by the Financial Conduct Authority. Connells Limited's Financial Services Register number is 302221. Most buy-to-let

