



Church Road, £290,000

- Village Location
- Close To Amenities
- Easy Access
- Beautifully Presented
- Off Street Parking
- Sought After Location
- Large Garden
- EPC Rating: D



 2
  1
  1



About the property

Situated close to Shops, churches, restaurants, schools, leisure centre this property has an abundance of amenities within easy access. Beautifully presented and very well cared for this is a great home to relax and enjoy.

Accommodation

Entrance

Entered via front door into hallway

Hallway

Entrance hall with Laminate flooring, access to all rooms and stairs to loft room.

Living Room

16' 8" x 10' 11" (5.08m x 3.33m)

Windows to front and side. Laminate flooring. GCH radiator. Wall mounted electric fire.



Kitchen

13' 8" x 8' 11" (4.17m x 2.72m)

Fitted with a range of modern wall and base units and complimenting work surfaces. Sink unit with mixer tap. Integrated Oven , hob and extractor fan. Integrated appliances. Plinth lighting. Wall mounted boiler. Laminate flooring. Spotlights. Window to the side.

Dining Room

Dining area with party Poly carbon roof, GH radiators, Windows and door leading out to the garden.

Bathroom

Fully tiled with fitted bathroom suite comprising of Bath with shower over, W.C, Pedestal was hand basin. Obscured double glazed window. Vinyl flooring.

Bedroom One

12' x 10' (3.66m x 3.05m)

Double glazed window. GCH radiator. Original feature fireplace. Stripped floor.

Bedroom Two

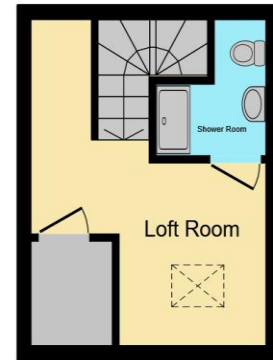
02920 792888

rumney@peteralan.co.uk

Floorplan



Ground Floor



First Floor

This floor plan is for illustrative purposes only. It is not drawn to scale. Any measurements, floor areas (including any total floor area), openings and orientation are approximate. No details are guaranteed, they cannot be relied upon for any purpose and they do not form part of any agreement. No liability is taken for any error, omission or misstatement. A party must rely upon its own inspection(s). Powered by www.focalagent.com

Important Information

Note while we endeavour to make our sales details accurate and reliable, if there is any point which is of particular interest to you, please contact the office and we will be pleased to confirm the position for you. We have not personally tested any apparatus, equipment, fixtures, fittings or services and cannot verify they are in working order or fit for their purposes. Nothing in these particulars is intended to indicate that carpets or curtains, furnishings or fittings, electrical goods (whether wired or not). Gas fires or light fittings or any other fixtures not expressly included form part of the property offered for sale. This computer generated Floorplan, if applicable, is intended as a general guide to the layout and design of the property. It is not to scale and should not be relied upon for dimensions. Tenure: We cannot confirm the tenure of the property as we have not had access to the legal documents. The buyer is advised to obtain verification from their solicitor or surveyor.

Peter Alan Limited is registered in England and Wales under company number 2073153, Registered Office is Cumbria House, 16-20 Hockliffe Street, Leighton Buzzard, Bedfordshire, LU7 1GN. VAT Registration Number is 500 2481 05. For activities relating to regulated mortgages and non-investment insurance contracts, Peter Alan Limited is an appointed representative of Connells Limited which is authorised and regulated by the Financial Conduct Authority. Connells Limited's Financial Services Register number is 302221. Most buy-to-let