



## Bridgwater Road, £275,000

- council tax band D
- Chain Free
- Three Bedrooms
- Semi Detached
- Popular Street
- Lovely Garden
- Garage
- Close To Amenities
- EPC Rating: Awaited



 3  1  2



## About the property

Located in the popular street of Bridgwater Road, and benefiting from having two reception rooms, kitchen, three bedrooms, garden and garage, making this a perfect choice for a first time buyer looking to put their own stamp on. Being sold with no onward chain.

## Accommodation

### Entrance

Stairs to first floor, carpet, double glazed window to side. Access to the two reception rooms and the kitchen.

### Lounge

13' 1" max x 13' max ( 3.99m max x 3.96m max )

Double glazed bay window to front. Carpet. Radiator.

### Dining Room

12' 1" max x 12' max ( 3.68m max x 3.66m max )

Double glazed patio doors to rear. Carpet. Gas fire and surround.



### Bedroom One

13' x 11' 4" max ( 3.96m x 3.45m max )

Double glazed window to front. Radiator. Carpet.

### Bedroom Two

12' 1" max x 11' 4" max ( 3.68m max x 3.45m max )

Double glazed window to rear. Radiator. Carpet.

### Bedroom Three

7' 8" max x 6' 6" max ( 2.34m max x 1.98m max )

Double glazed window to front. Carpet. Radiator.

### Kitchen

9' 6" max x 7' 1" max ( 2.90m max x 2.16m max )

Double glazed window to side. Door to rear. Access to the pantry. Wall and base units. Stainless steel sink unit and drainer. Plumbed for a washing machine and space for a fridge freezer. Tiled splashbacks.

### Outhouse

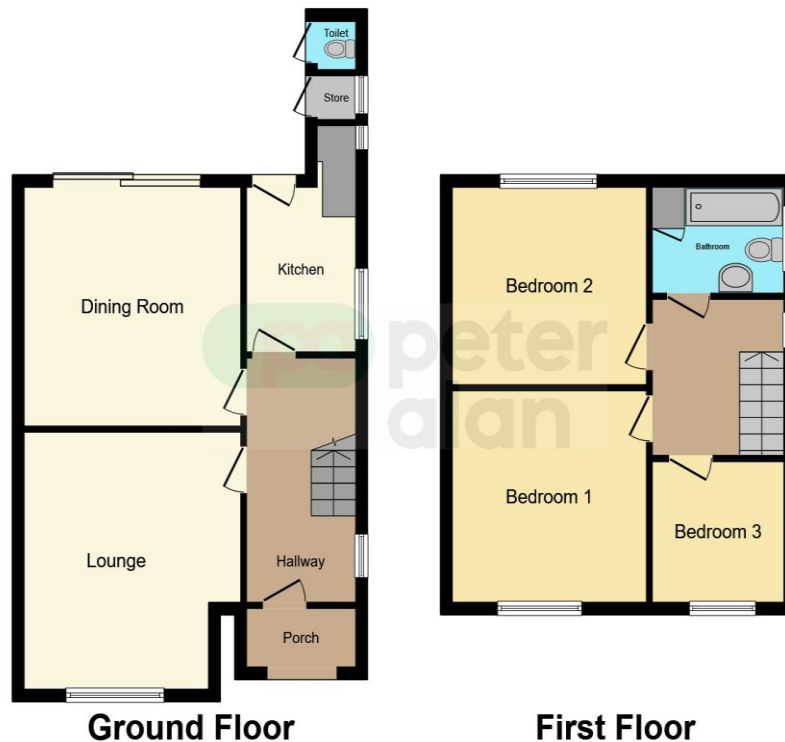
### Bathroom

Double glazed window to side. Airing cupboard. Wash hand basin and low level WC. Panelled bath with shower over. Part tiled walls. Laminate floor.

02920 792888

rumney@peteralan.co.uk

## Floorplan



This floor plan is for illustrative purposes only. It is not drawn to scale. Any measurements, floor areas (including any total floor area), openings and orientation are approximate. No details are guaranteed, they cannot be relied upon for any purpose and they do not form part of any agreement. No liability is taken for any error, omission or misstatement. A party must rely upon its own inspection(s). Powered by [www.focalagent.com](http://www.focalagent.com)

## Important Information

Note while we endeavour to make our sales details accurate and reliable, if there is any point which is of particular interest to you, please contact the office and we will be pleased to confirm the position for you. We have not personally tested any apparatus, equipment, fixtures, fittings or services and cannot verify they are in working order or fit for their purposes. Nothing in these particulars is intended to indicate that carpets or curtains, furnishings or fittings, electrical goods (whether wired or not). Gas fires or light fittings or any other fixtures not expressly included form part of the property offered for sale. This computer generated Floorplan, if applicable, is intended as a general guide to the layout and design of the property. It is not to scale and should not be relied upon for dimensions. Tenure: We cannot confirm the tenure of the property as we have not had access to the legal documents. The buyer is advised to obtain verification from their solicitor or surveyor.

Peter Alan Limited is registered in England and Wales under company number 2073153, Registered Office is Cumbria House, 16-20 Hockliffe Street, Leighton Buzzard, Bedfordshire, LU7 1GN. VAT Registration Number is 500 2481 05. For activities relating to regulated mortgages and non-investment insurance contracts, Peter Alan Limited is an appointed representative of Connells Limited which is authorised and regulated by the Financial Conduct Authority. Connells Limited's Financial Services Register number is 302221. Most buy-to-let