



Wentworth Lane, £300,000

- Council Tax - D
- Spacious Living
- Three Reception Rooms
- Study
- Large Kitchen
- Conservatory
- Three Bedrooms
- Great Location
- EPC Rating: B



 3  1  4



About the property

Tucked away in a quiet cul de sac in Wentworth Lane, St Mellons is this large than average three bedroom family home. Offering three reception rooms, study, large kitchen, downstairs WC and a conservatory. Being close to amenities including shops, schools and bus stops. A perfect next home.

Accommodation

Entrance

Window to side, stairs to first floor, tiled floor and radiator. Access to the dining room and Cloakroom.

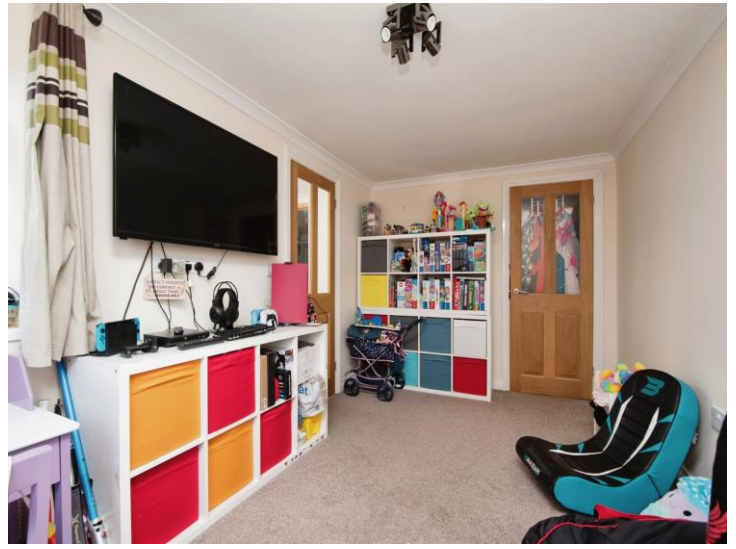
Cloakroom

4' 4" x 4' 1" (1.32m x 1.24m)

Frosted window to side, tiled floor, wash hand basin and a low level WC.

Lounge

14' 6" x 13' 8" (4.42m x 4.17m)



Playroom/Reception Three

15' 5" x 8' 7" (4.70m x 2.62m)

Double glazed window to rear. Carpet. Access to the conservatory and study.

Conservatory

9' 2" x 6' 7" (2.79m x 2.01m)

Double doors to rear garden. Tiled floor. Skylight.

Dining Room

12' 6" x 11' 2" (3.81m x 3.40m)

Window to side, Carpet, Access to the kitchen and open to the lounge.

Study

7' 9" x 7' 8" (2.36m x 2.34m)

Window to front. Carpet.

02920 792888

rumney@peteralan.co.uk

Floorplan



This floor plan is for illustrative purposes only. It is not drawn to scale. Any measurements, floor areas (including any total floor area), openings and orientation are approximate. No details are guaranteed, they cannot be relied upon for any purpose and they do not form part of any agreement. No liability is taken for any error, omission or misstatement. A party must rely upon its own inspection(s). Powered by www.focalagent.com

Important Information

Note while we endeavour to make our sales details accurate and reliable, if there is any point which is of particular interest to you, please contact the office and we will be pleased to confirm the position for you. We have not personally tested any apparatus, equipment, fixtures, fittings or services and cannot verify they are in working order or fit for their purposes. Nothing in these particulars is intended to indicate that carpets or curtains, furnishings or fittings, electrical goods (whether wired or not). Gas fires or light fittings or any other fixtures not expressly included form part of the property offered for sale. This computer generated Floorplan, if applicable, is intended as a general guide to the layout and design of the property. It is not to scale and should not be relied upon for dimensions. Tenure: We cannot confirm the tenure of the property as we have not had access to the legal documents. The buyer is advised to obtain verification from their solicitor or surveyor.

Peter Alan Limited is registered in England and Wales under company number 2073153, Registered Office is Cumbria House, 16-20 Hockliffe Street, Leighton Buzzard, Bedfordshire, LU7 1GN. VAT Registration Number is 500 2481 05. For activities relating to regulated mortgages and non-investment insurance contracts, Peter Alan Limited is an appointed representative of Connells Limited which is authorised and regulated by the Financial Conduct Authority. Connells Limited's Financial Services Register number is 302221. Most buy-to-let