



The Meadows, £290,000

- council tax band D
- Immaculate Throughout
- Great Location
- Three Bedrooms
- Newly Fitted Kitchen and Bathroom
- Modern Decor
- Garage
- Summer House
- EPC Rating: C



 3  2  1



About the property

This perfect three bedroom semi detached house is offered to the market with no onward chain. Located in a quiet cul de sac in The Meadows, Marshfield. Benefiting from modern decor throughout and a newly fitted kitchen and bathroom. Viewing is highly recommended to appreciate all on offer here.

Accommodation

Entrance Hall

Tiled floor, radiator

Cloakroom

UPVC double glazed frosted window to the front, hand wash basin with tap, radiator , tiled walls and low level W.C

Lounge 14' 4" x 15' 2" max (4.37m x 4.62m max)

Under stairs storage cupboard, carpet, Upvc double glazed patio door and window to rear garden, two radiators.

Kitchen

9' 9" x 8' 4" (2.97m x 2.54m)

Radiator, gas hob fan oven, integrated fridge freezer and washing machine, tiled flooring, tile splash back, boiler cupboard, PVC , sink with mixer tap and built in draining board, UPVC double glazed window to front. Modern Wall and Base units.



Landing

Loft access, no ladder, part boarded, airing cupboard

Bedroom 1

11' 3" x 8' 4" (3.43m x 2.54m)

UPVC double glazed window to rear, carpet, built in wardrobes, radiator

Bedroom 2

9' 3" x 8' 4" (2.82m x 2.54m)

Radiator, UPVC double glazed window to front, carpet, built in wardrobes

Bedroom 3

7' 1" x 6' 4" (2.16m x 1.93m)

Radiator, UPVC double glazed window to rear, carpet

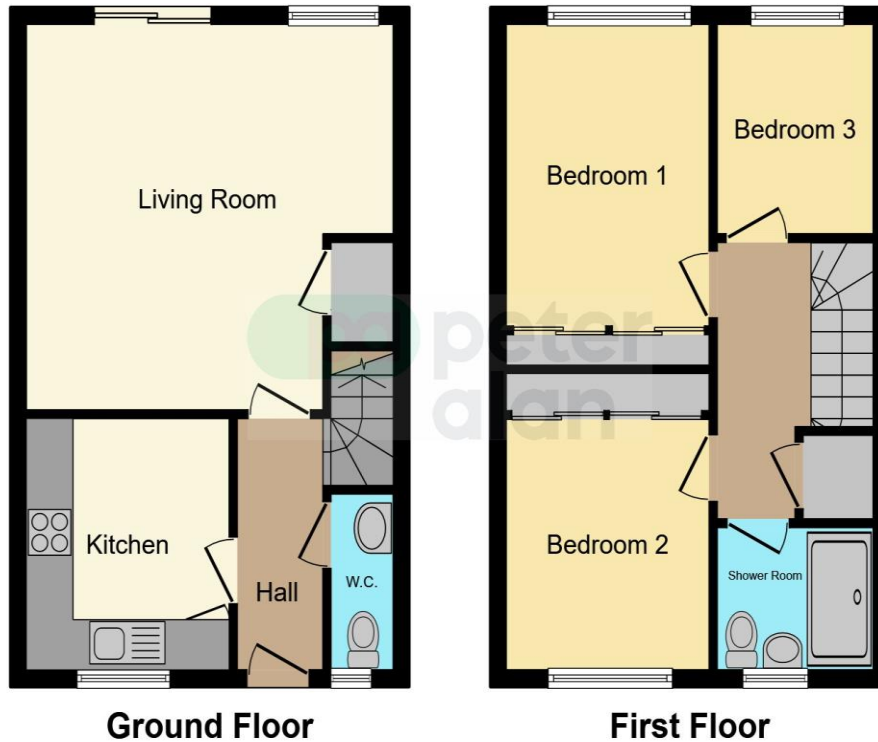
Bathroom

Towel rail, hand wash basin cabinet with taps, tiled floor and walls, low level w.c , frosted window to front, mirrored walk in shower cubicle with waterfall head

Rear Garden

Patio access to side gate and garage , summer house

Floorplan



This floor plan is for illustrative purposes only. It is not drawn to scale. Any measurements, floor areas (including any total floor area), openings and orientation are approximate. No details are guaranteed, they cannot be relied upon for any purpose and they do not form part of any agreement. No liability is taken for any error, omission or misstatement. A party must rely upon its own inspection(s). Powered by www.focalagent.com

Important Information

Note while we endeavour to make our sales details accurate and reliable, if there is any point which is of particular interest to you, please contact the office and we will be pleased to confirm the position for you. We have not personally tested any apparatus, equipment, fixtures, fittings or services and cannot verify they are in working order or fit for their purposes. Nothing in these particulars is intended to indicate that carpets or curtains, furnishings or fittings, electrical goods (whether wired or not). Gas fires or light fittings or any other fixtures not expressly included form part of the property offered for sale. This computer generated Floorplan, if applicable, is intended as a general guide to the layout and design of the property. It is not to scale and should not be relied upon for dimensions. Tenure: We cannot confirm the tenure of the property as we have not had access to the legal documents. The buyer is advised to obtain verification from their solicitor or surveyor.

Peter Alan Limited is registered in England and Wales under company number 2073153, Registered Office is Cumbria House, 16-20 Hockliffe Street, Leighton Buzzard, Bedfordshire, LU7 1GN. VAT Registration Number is 500 2481 05. For activities relating to regulated mortgages and non-investment insurance contracts, Peter Alan Limited is an appointed representative of Connells Limited which is authorised and regulated by the Financial Conduct Authority. Connells Limited's Financial Services Register number is 302221. Most buy-to-let