



Dickens Avenue, guide price £240,000

- THREE BEDROOMS
- OFF ROAD PARKING
- KITCHEN DINER
- CLOSE TO LOCAL AMENITIES
- EPC Rating: D



 3  1  2



About the property

*** GUIDE PRICE £240,000 - £250,000 ***

This three bedroom home is sat on a good size plot offering off road parking for two cars and rear garden for entertaining family and friends. This well presented home will be snapped up, so be quick to reserve your allocated viewing time!

Accommodation

Entrance

Enter the property via UPVC door into spacious hallway with real wooden flooring, radiator, doors leading to lounge, kitchen, WC and stairs to first floor landing

Lounge

17' 11" x 10' 10" (5.46m x 3.30m)

this spacious lounge benefits from real wood flooring throughout, plain walls and ceiling with coving, radiator, two large UPVC double glazed windows to both front and rear aspect and space for electric fireplace

W.C



drainer, radiator, space for American style fridge freezer and space for washing machine and dryer. Plain walls and ceiling with coving, Upvc double glazed patio doors to rear garden and UPVC double glazed window in obscured glass to front aspect real wood flooring throughout.

First Floor Landing

with carpeted stairs and landing, Upvc double glazed window to rear aspect, loft hatch access and doors leading to three bedrooms and family bathroom

Bedroom One

10' 2" x 12' 1" (3.10m x 3.68m)

Located to the front aspect of the property with Upvc double glazed large windows allowing in plenty of natural light, radiator, fitted carpet, large built in wardrobe space housing boiler, plain walls and ceiling and plenty of space for bedroom furniture.

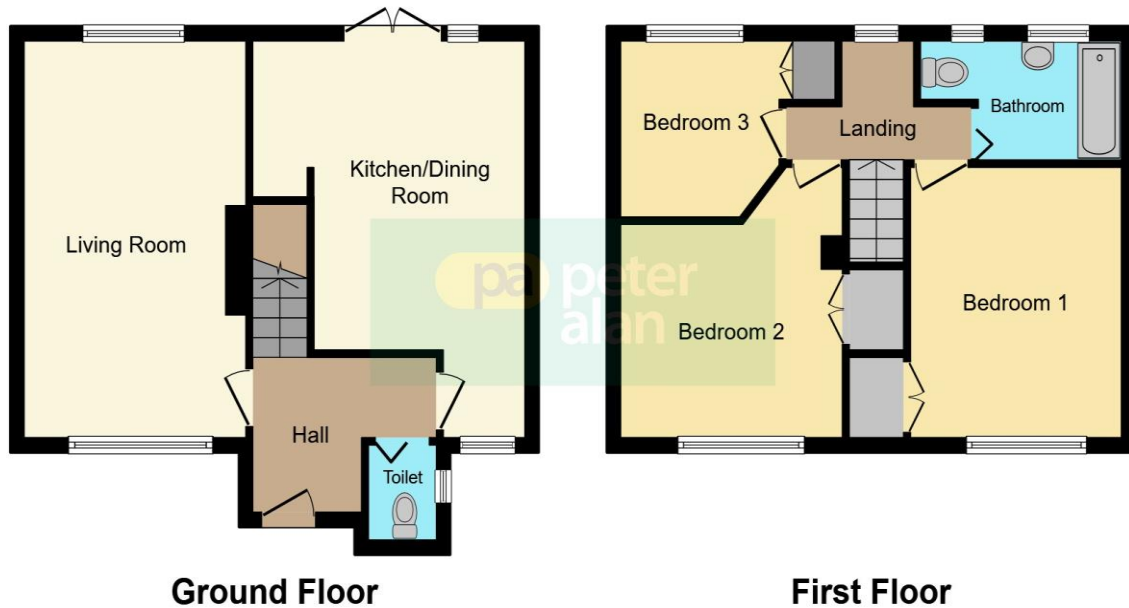
Kitchen

17' 10" x 13' 3" (5.44m x 4.04m)

With a range of matching wall and base units incorporating worktop space integrated electric oven and gas hob with extractor fan over, stainless steel sink with mixer tap and



Floorplan



This floorplan is for illustrative purposes only and is not drawn to scale. Measurements, floor-areas, openings and orientations are approximate. They should not be relied upon for any purpose and do not form any part of an agreement. No liability is taken for any error or mis-statement. All parties must rely on their own inspections.

Important Information

Note while we endeavour to make our sales details accurate and reliable, if there is any point which is of particular interest to you, please contact the office and we will be pleased to confirm the position for you. We have not personally tested any apparatus, equipment, fixtures, fittings or services and cannot verify they are in working order or fit for their purposes. Nothing in these particulars is intended to indicate that carpets or curtains, furnishings or fittings, electrical goods (whether wired or not), Gas fires or light fittings or any other fixtures not expressly included form part of the property offered for sale. This computer generated Floorplan, if applicable, is intended as a general guide to the layout and design of the property. It is not to scale and should not be relied upon for dimensions. Tenure: We cannot confirm the tenure of the property as we have not had access to the legal documents. The buyer is advised to obtain verification from their solicitor or surveyor.

Peter Alan Limited is registered in England and Wales under company number 2073153, Registered Office is Cumbria House, 16-20 Hockliffe Street, Leighton Buzzard, Bedfordshire, LU7 1GN. VAT Registration Number is 500 2481 05. For activities relating to regulated mortgages and non-investment insurance contracts, Peter Alan Limited is an appointed representative of Connells Limited which is authorised and regulated by the Financial Conduct Authority. Connells Limited's Financial Services Register number is 302221. Most buy-to-let