



Sea View Newport guide price £180,000

- Great Location
- Two Double Bedrooms
- Two Reception Rooms
- Kitchen with Utility
- Courtyard Garden
- Close To Amenities
- Mix of Modern and Traditional Decor
- EPC Rating: D



 2  1  2



About the property

GUIDE PRICE OF £180,000- £190,000

A charming two double bedroom cottage located in the heart of Old St Mellons close to local amenities. A perfect choice as this offers a mix of modern and traditional decor. Call to arrange your viewing.

Accommodation

Entrance

Enter via the front door into the hallway with tiled effect vinyl flooring. Radiator. Access to the dining room and stairs to first floor.

Lounge

12' 5" x 12' 5" (3.78m x 3.78m)

Double glazed window to front. Hardwood floor. Radiator. Feature fire place. Exposed and original stone built wall.

Dining Room

15' x 8' 4" (4.57m x 2.54m)

Double glazed window to rear. Hardwood floor. Radiator. Exposed stairs. Open to kitchen.

Kitchen

12' 1" x 6' 4" (3.68m x 1.93m)

Double glazed window to side. Double glazed door to side. A range of wall and base units. Spotlights to ceiling. Access to the utility room. Recess with storage. Space for a fridge freezer. Tiled splashbacks and floor.



Utility Room

Window to rear. Plumbed for a washing machine and space for a tumble dryer.

Bedroom One

10' 8" x 10' 8" (3.25m x 3.25m)

Double glazed window to front. Large fitted wardrobe. Carpet. Radiator.

Bedroom Two

9' x 7' 9" (2.74m x 2.36m)

Double glazed window to front. Radiator. Carpet.

Bathroom

Double glazed frosted window to rear. P shaped bath. Low level WC. Wash hand basin. Tiled splashbacks. Large built in storage cupboard.

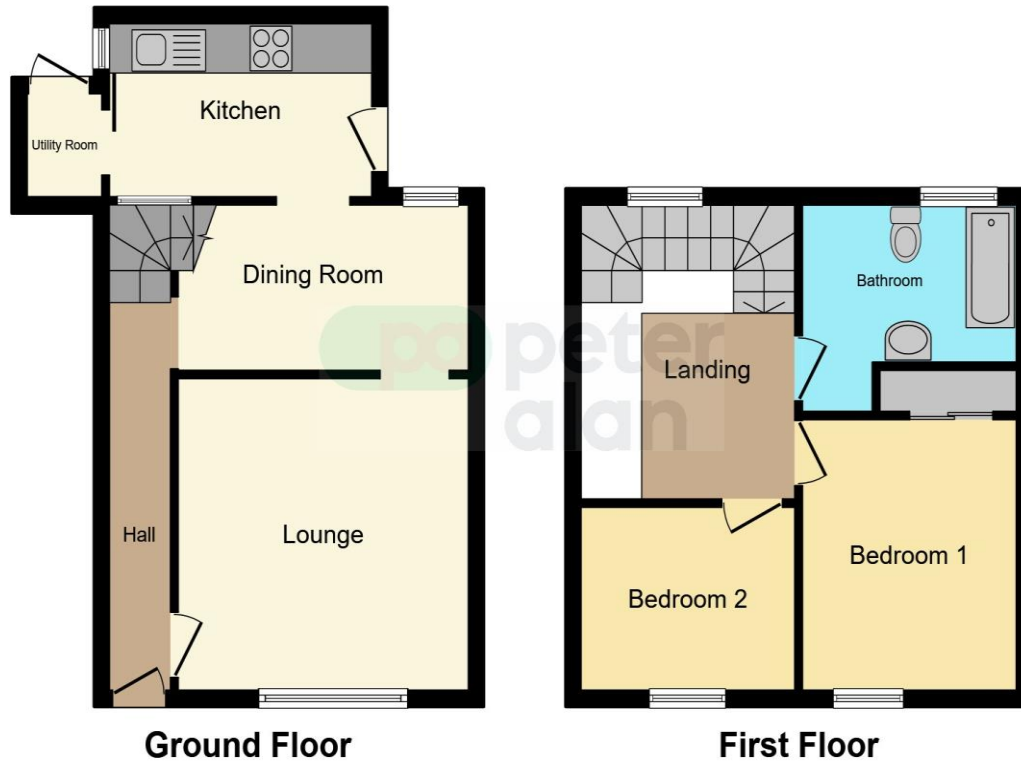
Courtyard

Rear shared courtyard.

Front

Private front garden with gated access.

Floorplan



This floorplan is for illustrative purposes only and is not drawn to scale. Measurements, floor-areas, openings and orientations are approximate. They should not be relied upon for any purpose and do not form any part of an agreement. No liability is taken for any error or mis-statement. All parties must rely on their own inspections.

Important Information

Note while we endeavour to make our sales details accurate and reliable, if there is any point which is of particular interest to you, please contact the office and we will be pleased to confirm the position for you. We have not personally tested any apparatus, equipment, fixtures, fittings or services and cannot verify they are in working order or fit for their purposes. Nothing in these particulars is intended to indicate that carpets or curtains, furnishings or fittings, electrical goods (whether wired or not). Gas fires or light fittings or any other fixtures not expressly included form part of the property offered for sale. This computer generated Floorplan, if applicable, is intended as a general guide to the layout and design of the property. It is not to scale and should not be relied upon for dimensions. Tenure: We cannot confirm the tenure of the property as we have not had access to the legal documents. The buyer is advised to obtain verification from their solicitor or surveyor.

Peter Alan Limited is registered in England and Wales under company number 2073153, Registered Office is Cumbria House, 16-20 Hockliffe Street, Leighton Buzzard, Bedfordshire, LU7 1GN. VAT Registration Number is 500 2481 05. For activities relating to regulated mortgages and non-investment insurance contracts, Peter Alan Limited is an appointed representative of Connells Limited which is authorised and regulated by the Financial Conduct Authority. Connells Limited's Financial Services Register number is 302221. Most buy-to-let