



Kennerleigh Road, guide price £130,000

- Ground Floor
- Two Double Bedrooms
- Large Lounge
- Close To Amenities
- EPC Rating: C



 2  1  1



About the property

Located in Kennerleigh Road, and close to shops, bus stops and local amenities is this two bedroom ground floor flat.

Accommodation

Entrance

The apartment is accessed via a communal hallway and is found on the ground floor.

Hallway

Radiator, huge storage cupboard with shelves and doors to all rooms.

Lounge

11' 5" max x 20' max (3.48m max x 6.10m max)

Carpet flooring, radiator, PVC double glazed window to the rear aspect.



Bedroom One

11' 5" x 11' 5" (3.48m x 3.48m)

Bedroom Two

7' 10" x 11' 5" (2.39m x 3.48m)

Second double bedroom with carpet flooring, radiator, PVC double glazed window to the front aspect.



Bathroom

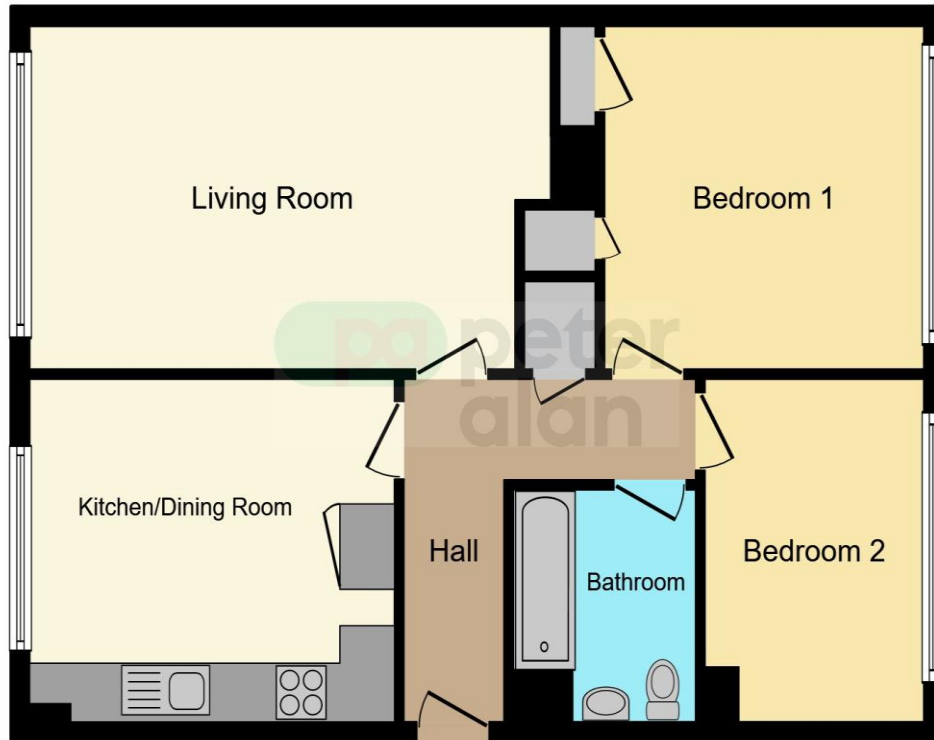
Towel radiator, low level w.c, wash hand basin, bath with shower over, PVC double glazed window to the side aspect.

Kitchen

11' 4" x 13' 5" (3.45m x 4.09m)

Matching base and wall units, stainless steel sink and drainer, wall mounted combination boiler, storage cupboard gas and electric meters, PVC double glazed window to the rear.

Floorplan



This floorplan is for illustrative purposes only and is not drawn to scale. Measurements, floor-areas, openings and orientations are approximate. They should not be relied upon for any purpose and do not form any part of an agreement. No liability is taken for any error or mis-statement. All parties must rely on their own inspections.

Important Information

Note while we endeavour to make our sales details accurate and reliable, if there is any point which is of particular interest to you, please contact the office and we will be pleased to confirm the position for you. We have not personally tested any apparatus, equipment, fixtures, fittings or services and cannot verify they are in working order or fit for their purposes. Nothing in these particulars is intended to indicate that carpets or curtains, furnishings or fittings, electrical goods (whether wired or not). Gas fires or light fittings or any other fixtures not expressly included form part of the property offered for sale. This computer generated Floorplan, if applicable, is intended as a general guide to the layout and design of the property. It is not to scale and should not be relied upon for dimensions. Tenure: We cannot confirm the tenure of the property as we have not had access to the legal documents. The buyer is advised to obtain verification from their solicitor or surveyor.

Peter Alan Limited is registered in England and Wales under company number 2073153, Registered Office is Cumbria House, 16-20 Hockliffe Street, Leighton Buzzard, Bedfordshire, LU7 1GN. VAT Registration Number is 500 2481 05. For activities relating to regulated mortgages and non-investment insurance contracts, Peter Alan Limited is an appointed representative of Connells Limited which is authorised and regulated by the Financial Conduct Authority. Connells Limited's Financial Services Register number is 302221. Most buy-to-let