



Oak Tree Drive, £210,000

- NO CHAIN
- Brand new conservatory
- Quiet, family-friendly location
- Not overlooked
- Council tax band C
- EPC Rating: C



 2
  1
  1



About the property

This well-presented two-bedroom mid-terrace home offers comfortable, modern living in a very quiet and family-friendly area, making it an excellent choice for first-time buyers and investors alike.

The property benefits from a driveway at the front, providing convenient off-road parking. Upon entering, you are welcomed into a bright and inviting living room, ideal for relaxing or entertaining. The fitted kitchen offers storage and workspace, with easy access to a ground-floor WC for added practicality. Completing the downstairs accommodation is a brand new conservatory, which creates a fantastic additional living or dining space and overlooks the garden, allowing plenty of natural light to flow through the home.

Upstairs, the property features two double bedrooms, both well-proportioned and suitable for a range of furnishings. The family bathroom is neatly presented and serves both bedrooms comfortably.

Externally, the home boasts a decent-sized rear garden, perfect for outdoor dining, gardening, or family activities, while remaining low maintenance.

The property is energy efficient with an EPC rating of C and falls within Council Tax Band C, helping to keep running costs manageable.

Situated in a peaceful residential location with a strong sense of community, this home offers a great balance of comfort, space, and practicality. An ideal opportunity for those looking to step onto the property ladder or add a reliable investment.



Accommodation

Entrance Hallway

Cloakroom

Kitchen

6' 6" x 8' 9" (1.98m x 2.67m)

Living Room

13' 9" x 12' 6" (4.19m x 3.81m)

Conservatory

8' 6" x 7' 10" (2.59m x 2.39m)

Landing

Bathroom

Bedroom 1

11' 6" x 10' 10" (3.51m x 3.30m)

Bedroom 2

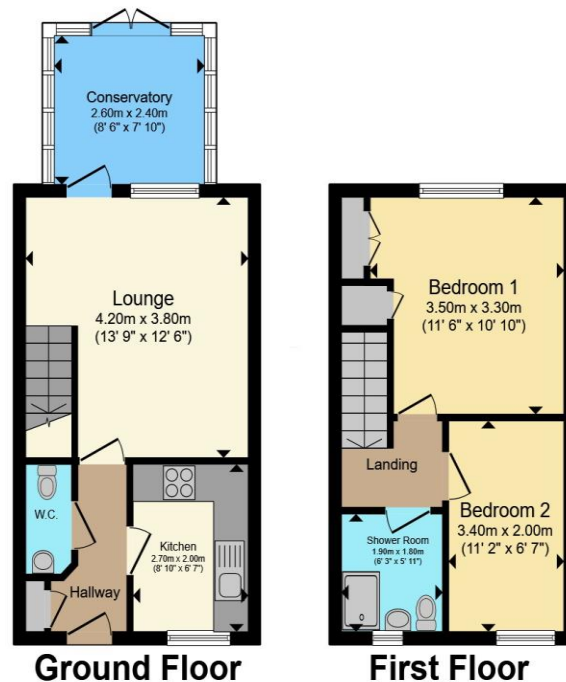
11' 2" x 6' 7" (3.40m x 2.01m)

Garden

01633 221892

newport@peteralan.co.uk

Floorplan



Total floor area 60.8 m² (654 sq.ft.) approx

This floor plan is for illustrative purposes only. It is not drawn to scale. Any measurements, floor areas (including any total floor area), openings and orientation are approximate. No details are guaranteed, they cannot be relied upon for any purpose and they do not form part of any agreement. No liability is taken for any error, omission or misstatement. A party must rely upon its own inspection(s). Powered by www.propertybox.io



Important Information

Note while we endeavour to make our sales details accurate and reliable, if there is any point which is of particular interest to you, please contact the office and we will be pleased to confirm the position for you. We have not personally tested any apparatus, equipment, fixtures, fittings or services and cannot verify they are in working order or fit for their purposes. Nothing in these particulars is intended to indicate that carpets or curtains, furnishings or fittings, electrical goods (whether wired or not). Gas fires or light fittings or any other fixtures not expressly included form part of the property offered for sale. This computer generated Floorplan, if applicable, is intended as a general guide to the layout and design of the property. It is not to scale and should not be relied upon for dimensions. Tenure: We cannot confirm the tenure of the property as we have not had access to the legal documents. The buyer is advised to obtain verification from their solicitor or surveyor.

Peter Alan Limited is registered in England and Wales under company number 2073153, Registered Office is Cumbria House, 16-20 Hockliffe Street, Leighton Buzzard, Bedfordshire, LU7 1GN. VAT Registration Number is 500 2481 05. For activities relating to regulated mortgages and non-investment insurance contracts, Peter Alan Limited is an appointed representative of Connells Limited which is authorised and regulated by the Financial Conduct Authority. Connells Limited's Financial Services Register number is 302221. Most buy-to-let

