



Hollyhock Close, £350,000

- Four bedroom end of terrace home
- Driveway and private rear garden
- Bright living space with conservatory
- Spacious top floor bedroom with en suite
- Council tax band D
- EPC Rating: C



 4
  2
  1



About the property

This attractive four bedroom end of terrace house offers generous living space, modern finishes, and a welcoming layout, making it an ideal choice for families or first time buyers. Set in a quiet, family friendly area, the property benefits from a private driveway and a well maintained back garden, perfect for everyday living and entertaining.

The ground floor begins with a porch entrance leading into a practical hallway with a convenient WC. A bright and comfortable living room provides a relaxing space to unwind, while the immaculate kitchen is thoughtfully designed with ample storage and worktop space. To the rear, a conservatory with a dedicated dining area floods the home with natural light and opens onto the garden, creating a seamless indoor outdoor feel.

On the first floor, there are two well proportioned double bedrooms, a single bedroom ideal for a child or home office, and a modern family bathroom finished to a high standard. The second floor is dedicated to a spacious double bedroom, offering excellent privacy. This room is complemented by an en suite bathroom and additional space suitable for wardrobes or storage.

Outside, the rear garden is easy to maintain and provides a safe space for children or outdoor relaxation. With council tax band D, this well presented home combines comfort, space, and location, and is perfectly suited to growing families or those taking their first step onto the property ladder. Early viewing is highly recommended today.



Accommodation

Porch

8' 2" x 6' 3" (2.49m x 1.91m)

Entrance Hallway

Bathroom

Cloakroom

Bedroom 1

Living Room

17' 5" x 12' 10" (5.31m x 3.91m)

16' 5" x 9' 6" (5.00m x 2.90m)

En Suite

Kitchen

Dressing Room

14' 9" x 8' 10" (4.50m x 2.69m)

Conservatory

Garden

12' 2" x 8' 2" (3.71m x 2.49m)

Landing

Bedroom 2

12' 6" x 8' 6" (3.81m x 2.59m)

Bedroom 3

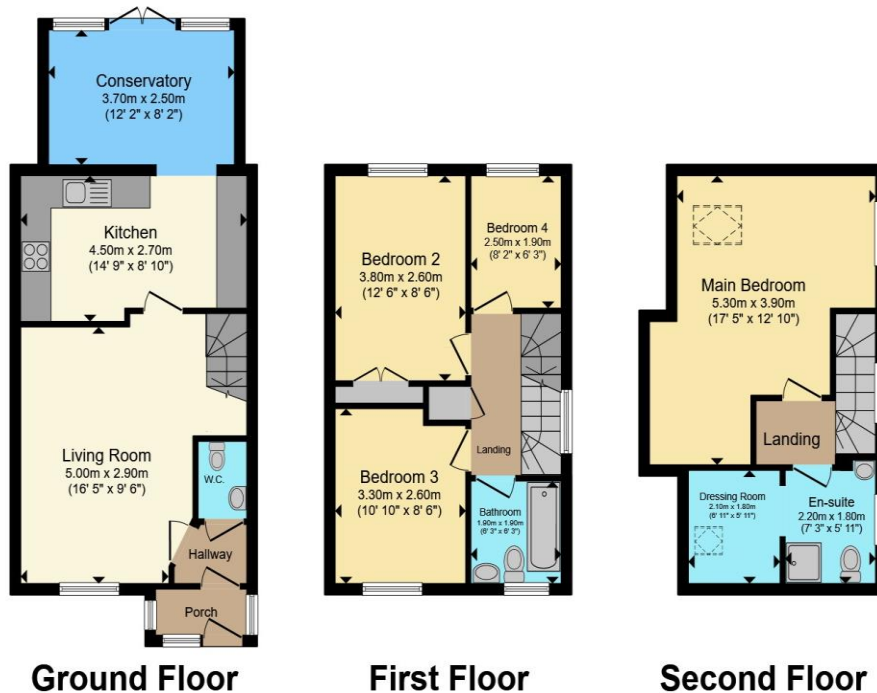
10' 10" x 8' 6" (3.30m x 2.59m)

Bedroom 4

01633 221892

newport@peteralan.co.uk

Floorplan



Total floor area 110.5 m² (1,190 sq.ft.) approx

This floor plan is for illustrative purposes only. It is not drawn to scale. Any measurements, floor areas (including any total floor area), openings and orientation are approximate. No details are guaranteed, they cannot be relied upon for any purpose and they do not form part of any agreement. No liability is taken for any error, omission or misstatement. A party must rely upon its own inspection(s). Powered by www.propertybox.io

pa peter
alan

Important Information

Note while we endeavour to make our sales details accurate and reliable, if there is any point which is of particular interest to you, please contact the office and we will be pleased to confirm the position for you. We have not personally tested any apparatus, equipment, fixtures, fittings or services and cannot verify they are in working order or fit for their purposes. Nothing in these particulars is intended to indicate that carpets or curtains, furnishings or fittings, electrical goods (whether wired or not). Gas fires or light fittings or any other fixtures not expressly included form part of the property offered for sale. This computer generated Floorplan, if applicable, is intended as a general guide to the layout and design of the property. It is not to scale and should not be relied upon for dimensions. Tenure: We cannot confirm the tenure of the property as we have not had access to the legal documents. The buyer is advised to obtain verification from their solicitor or surveyor.

Peter Alan Limited is registered in England and Wales under company number 2073153, Registered Office is Cumbria House, 16-20 Hockliffe Street, Leighton Buzzard, Bedfordshire, LU7 1GN. VAT Registration Number is 500 2481 05. For activities relating to regulated mortgages and non-investment insurance contracts, Peter Alan Limited is an appointed representative of Connells Limited which is authorised and regulated by the Financial Conduct Authority. Connells Limited's Financial Services Register number is 302221. Most buy-to-let

pa peter
alan