



## Nettlefolds Crescent, offers in excess of £400,000

- Spacious and well presented
- Four bedroom detached
- Ensuite
- Driveway and garage
- Sought after development
- Open plan kitchen/dining room
- Utility room and cloakroom/WC
- EPC Rating: B



 4  2  1



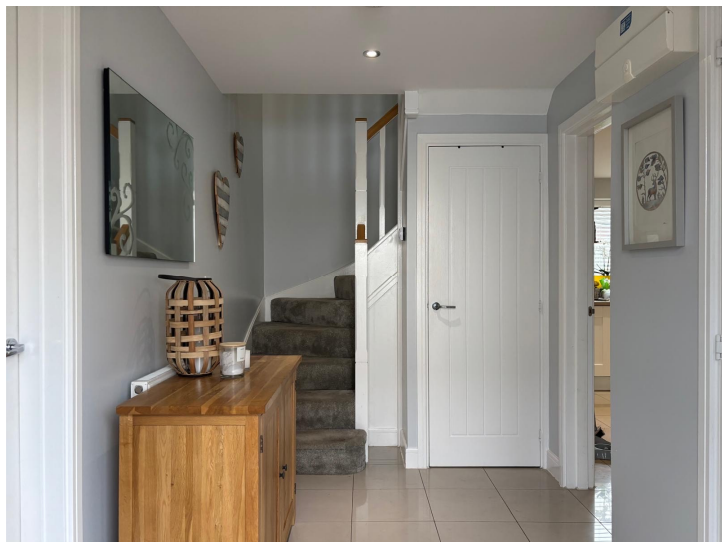


## About the property

A superb beautifully presented modern detached family home, ideally positioned in a sought-after area of Rogerstone. Offering excellent access to the M4 motorway, the property is perfectly placed for commuting. This outstanding home combines style, space, and a prime location.







## Accommodation

### Summary

A superb opportunity has arisen to acquire this beautifully presented modern detached family home, ideally positioned in a sought-after area of Rogerstone. Offering excellent access to the M4 motorway, the property is perfectly placed for commuting to Cardiff, Bristol, and further afield.

Upon entering, you are welcomed by a bright and spacious hallway, leading to a convenient cloakroom/WC and a generous lounge designed for comfort and relaxation. To the rear of the property, the contemporary open-plan kitchen and dining area create a sociable heart to the home, complemented by a separate utility room offering additional practicality.

The first floor hosts four well-proportioned bedrooms, including a spacious master bedroom with its own en-suite shower room. A modern family bathroom serves the remaining bedrooms, providing ample space for family living.

Externally, the property benefits from a private driveway and an integral garage, while the enclosed rear garden has been attractively landscaped for low-maintenance enjoyment, offering a secure space ideal for both children and outdoor entertaining.

Located in a desirable residential setting, the property is within easy reach of popular local pubs, restaurants, and highly regarded schools, including being just a short stroll from Jubilee Park Primary School. Newport City Centre is

under ten minutes away by car, providing an array of shopping facilities and direct rail links via Newport train station. This outstanding home combines style, space, and a prime location, making it an ideal choice for modern family life.

### Hallway

Enter via an opaque double glazed door to hallway. Doors to WC, understairs storage, lounge and kitchen/dining room. Ceramic tile flooring.

### Lounge

19' 9" x 11' 3" ( 6.02m x 3.43m )

UPVC double glazed window to front and rear elevations. Wood laminate flooring. Two radiators. Feature fireplace with electric fire.

### Cloakroom/Wc

Comprising close coupled WC and pedestal wash hand basin. Ceramic tile flooring. Tiled splashbacks.

### Kitchen/Dining Room

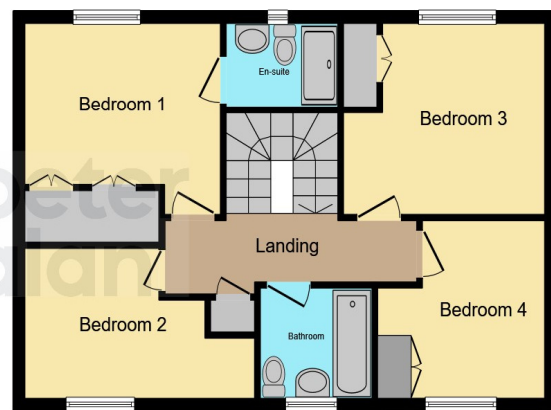
19' 7" x 11' 10" ( 5.97m x 3.61m )

The kitchen is fitted with an extensive range of base units, complemented by laminate worktops and incorporating a stainless-steel sink with drainer. Appliances include an electric oven with a gas hob, an integrated dishwasher, and a built-in fridge, providing both functionality and convenience. The space is finished with ceramic tile flooring and benefits from two radiators, ensuring comfort throughout. Natural light is welcomed via double glazed windows to both the front and rear elevations, and the kitchen opens seamlessly into the adjoining utility room.

## Floorplan



**Ground Floor**



**First Floor**

This floor plan is for illustrative purposes only. It is not drawn to scale. Any measurements, floor areas (including any total floor area), openings and orientation are approximate. No details are guaranteed, they cannot be relied upon for any purpose and they do not form part of any agreement. No liability is taken for any error, omission or misstatement. A party must rely upon its own inspection(s). Powered by [www.focalagent.com](http://www.focalagent.com)

## Important Information

Note while we endeavour to make our sales details accurate and reliable, if there is any point which is of particular interest to you, please contact the office and we will be pleased to confirm the position for you. We have not personally tested any apparatus, equipment, fixtures, fittings or services and cannot verify they are in working order or fit for their purposes. Nothing in these particulars is intended to indicate that carpets or curtains, furnishings or fittings, electrical goods (whether wired or not). Gas fires or light fittings or any other fixtures not expressly included form part of the property offered for sale. This computer generated Floorplan, if applicable, is intended as a general guide to the layout and design of the property. It is not to scale and should not be relied upon for dimensions. Tenure: We cannot confirm the tenure of the property as we have not had access to the legal documents. The buyer is advised to obtain verification from their solicitor or surveyor.

Peter Alan Limited is registered in England and Wales under company number 2073153, Registered Office is Cumbria House, 16-20 Hockliffe Street, Leighton Buzzard, Bedfordshire, LU7 1GN. VAT Registration Number is 500 2481 05. For activities relating to regulated mortgages and non-investment insurance contracts, Peter Alan Limited is an appointed representative of Connells Limited which is authorised and regulated by the Financial Conduct Authority. Connells Limited's Financial Services Register number is 302221. Most buy-to-let