



Claremont, offers in the region of £235,000

- Highly sought-after location
- Larger than average garden
- Single garage and driveway
- Close to public transport links
- Proximity to schools
- Easy access to M4 corridor
- EPC Rating: Awaited



 3  1  1



About the property

We are pleased to introduce to the market this immaculately presented semi-detached house, distinguished by its location in a highly sought-after area. This property is perfectly suited for families looking to enjoy the serene environment while still maintaining proximity to public transport links, local amenities, and nearby schools.

The property boasts three well-proportioned bedrooms, a spacious kitchen, and two inviting reception rooms, providing a perfect balance of living and entertaining space. The condition of the house is impeccable, ensuring that the new owners can move in with minimal fuss.

One of the standout features of this property is the larger than average garden, which offers an idyllic setting for outdoor activities and family gatherings. This is complemented by a single garage and a driveway, providing ample space for parking and storage.

A significant advantage of this property is its strategic location. It is a short drive from the city centre of Newport, offering easy access to a wide range of shops, amenities, and recreational facilities. Additionally, the property benefits from excellent connectivity to the M4 commuter corridor, facilitating seamless travel to the bustling cities of Cardiff and Bristol.

In summary, this property represents an ideal family home, combining space, comfort, and convenience with a great location. We recommend early viewing to truly appreciate the unique features and benefits of this impressive property.



Accommodation

Hallway

Kitchen

11' x 7' 1" (3.35m x 2.16m)

Dining Room

10' 11" x 9' 6" (3.33m x 2.90m)

Lounge

13' x 10' 10" (3.96m x 3.30m)

First Floor Landing

Bathroom

Bedroom One

10' 5" x 13' 4" (3.17m x 4.06m)

Bedroom Two

11' 7" x 9' 3" (3.53m x 2.82m)

Bedroom Three

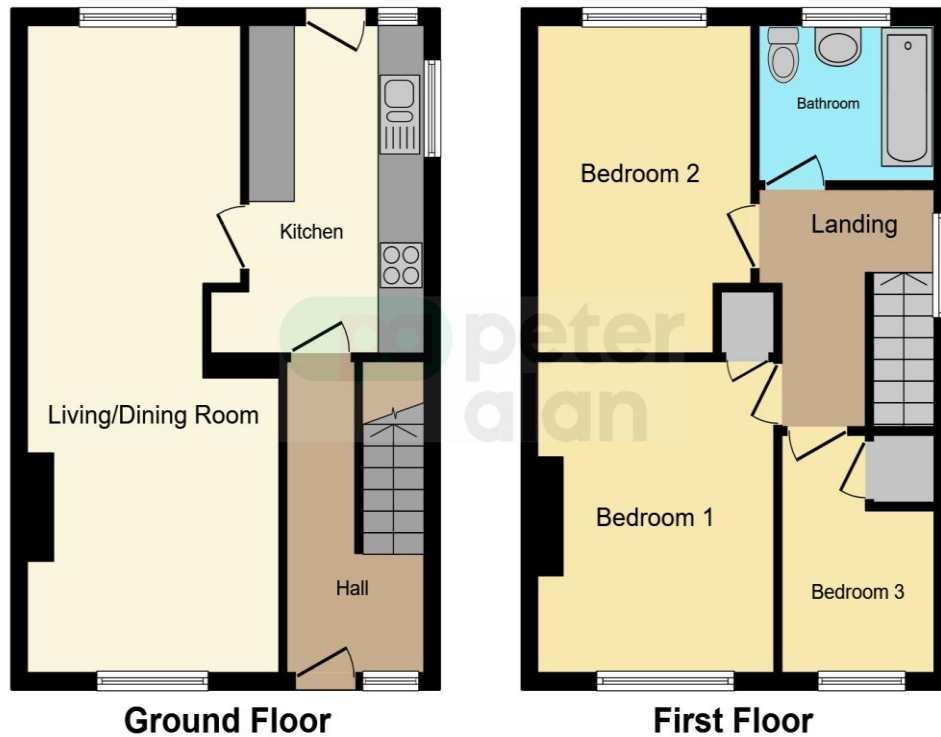
9' 5" x 6' 6" (2.87m x 1.98m)

Outside

01633 221892

newport@peteralan.co.uk

Floorplan



This floor plan is for illustrative purposes only. It is not drawn to scale. Any measurements, floor areas (including any total floor area), openings and orientation are approximate. No details are guaranteed, they cannot be relied upon for any purpose and they do not form part of any agreement. No liability is taken for any error, omission or misstatement. A party must rely upon its own inspection(s). Powered by www.focalagent.com

Important Information

Note while we endeavour to make our sales details accurate and reliable, if there is any point which is of particular interest to you, please contact the office and we will be pleased to confirm the position for you. We have not personally tested any apparatus, equipment, fixtures, fittings or services and cannot verify they are in working order or fit for their purposes. Nothing in these particulars is intended to indicate that carpets or curtains, furnishings or fittings, electrical goods (whether wired or not). Gas fires or light fittings or any other fixtures not expressly included form part of the property offered for sale. This computer generated Floorplan, if applicable, is intended as a general guide to the layout and design of the property. It is not to scale and should not be relied upon for dimensions. Tenure: We cannot confirm the tenure of the property as we have not had access to the legal documents. The buyer is advised to obtain verification from their solicitor or surveyor.

Peter Alan Limited is registered in England and Wales under company number 2073153, Registered Office is Cumbria House, 16-20 Hockliffe Street, Leighton Buzzard, Bedfordshire, LU7 1GN. VAT Registration Number is 500 2481 05. For activities relating to regulated mortgages and non-investment insurance contracts, Peter Alan Limited is an appointed representative of Connells Limited which is authorised and regulated by the Financial Conduct Authority. Connells Limited's Financial Services Register number is 302221. Most buy-to-let

pa peter
alan