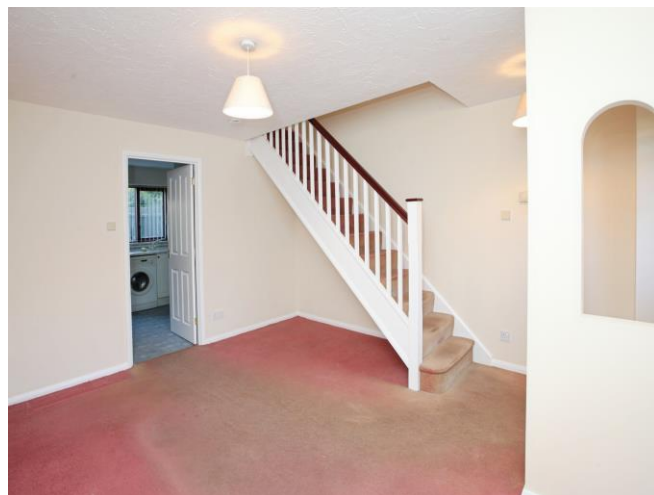




Marigold Close, £220,000

- Semi Detached
- Off Road Parking
- Two Bedrooms
- Chain Free
- Kitchen / Diner
- En-suite to master Bedroom
- Council Tax Band C
- EPC Rating C
- EPC Rating: C



 2  2  1



About the property

This remarkable semi-detached property, currently listed for sale, is an opportunity not to be missed. Neutrally decorated, it provides the perfect canvas for you to add your personal touch and transform it into your dream home.

The property boasts two bedrooms, a reception room, a bathroom, and a kitchen. The master bedroom is a haven of relaxation, featuring an en-suite shower room for your convenience. The second bedroom is designed with built-in wardrobes, offering ample storage space. The bathroom is equipped with a white suite, adding a touch of elegance to the space.

The heart of the home is the kitchen, which comes with a breakfast area, creating a perfect spot for morning get-togethers. It also provides access to the garden, inviting in plenty of natural light and offering an excellent space for those who enjoy outdoor dining.

This residence is in a sought-after location with excellent public transport links. It's also in close proximity to local schools and amenities, with various parks, walking routes, and cycling routes nearby, providing a perfect balance of city and nature living.

The property offers parking for two vehicles and a lovely garden, adding value to this already impressive property. This is an ideal investment for first-time buyers or investors looking for properties in prime locations.

The property falls under council tax band C and has an EPC rating of C, reflecting its decent energy efficiency.

Accommodation

Living Room

13' 7" x 12' 2" (4.14m x 3.71m)

Kitchen

9' 5" x 12' (2.87m x 3.66m)

Bedroom1

9' 9" x 8' 7" (2.97m x 2.62m)

En Suite-Shower Room

Bedroom 2

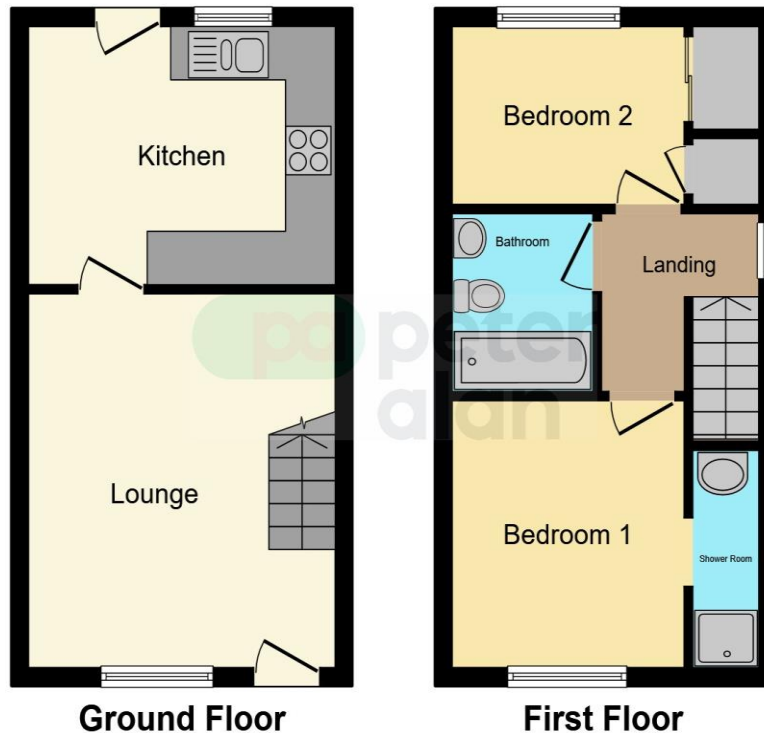
9' x 6' 6" (2.74m x 1.98m)

Bathroom

Garden



Floorplan



This floor plan is for illustrative purposes only. It is not drawn to scale. Any measurements, floor areas (including any total floor area), openings and orientation are approximate. No details are guaranteed, they cannot be relied upon for any purpose and they do not form part of any agreement. No liability is taken for any error, omission or misstatement. A party must rely upon its own inspection(s). Powered by www.focalagent.com

Important Information

Note while we endeavour to make our sales details accurate and reliable, if there is any point which is of particular interest to you, please contact the office and we will be pleased to confirm the position for you. We have not personally tested any apparatus, equipment, fixtures, fittings or services and cannot verify they are in working order or fit for their purposes. Nothing in these particulars is intended to indicate that carpets or curtains, furnishings or fittings, electrical goods (whether wired or not). Gas fires or light fittings or any other fixtures not expressly included form part of the property offered for sale. This computer generated Floorplan, if applicable, is intended as a general guide to the layout and design of the property. It is not to scale and should not be relied upon for dimensions. Tenure: We cannot confirm the tenure of the property as we have not had access to the legal documents. The buyer is advised to obtain verification from their solicitor or surveyor.

Peter Alan Limited is registered in England and Wales under company number 2073153, Registered Office is Cumbria House, 16-20 Hockliffe Street, Leighton Buzzard, Bedfordshire, LU7 1GN. VAT Registration Number is 500 2481 05. For activities relating to regulated mortgages and non-investment insurance contracts, Peter Alan Limited is an appointed representative of Connells Limited which is authorised and regulated by the Financial Conduct Authority. Connells Limited's Financial Services Register number is 302221. Most buy-to-let