



Llanover Close, £280,000

- Semi detached
- Three double bedrooms
- Two reception rooms
- Fitted Kitchen
- Off Road Parking & Garage
- Being sold with no onward Chain
- EPC Rating: E



 3  2  2



About the property

Welcome to this charming semi-detached property that is now on the market and waiting for its new owners. An inviting home ideal for first-time buyers, investors and families alike. This property is located in a desirable area with excellent public transport links, nearby schools, local amenities and green spaces for those lovely sunny afternoons.

The heart of this home is undoubtedly the two open-plan reception rooms. The first reception room has an open and airy feel, perfect for socialising and family time. The second is a true delight, not only is it open-plan, but it also enjoys a beautiful view of the garden. You can step straight out into the garden from here, a feature that invites the outside in and floods the room with natural light.

The kitchen is a sunny space with plenty of natural light. It has been thoughtfully designed for ease of use and also offers direct access to the garden, perfect for al fresco dining during the warmer months.

The property boasts three double bedrooms. The master bedroom is a spacious retreat after a long day. The other two bedrooms are also doubles, offering plenty of space for everyone.

There are two bathrooms in this lovely home. The first bathroom features a contemporary corner shower, whilst the second is a convenient downstairs shower room, a great addition to any home.

This property also comes with a single garage. The unique garden feature completes this home and makes it a must-see. Book a viewing today.

Accommodation

Living Room 13' 8" x 10' 5" (4.17m x 3.17m)

Dining Room 11' 1" x 10' 5" (3.38m x 3.17m)

Kitchen 11' 8" x 7' 2" (3.56m x 2.18m)

Shower Room

Bedroom 1 13' 5" Max x 12' 5" Max (4.09m Max x 3.78m Max)

Bedroom 2 12' 8" Max x 11' 8" (3.86m Max x 3.56m)

Bedroom 3 11' 2" x 12' 1" Max (3.40m x 3.68m Max)

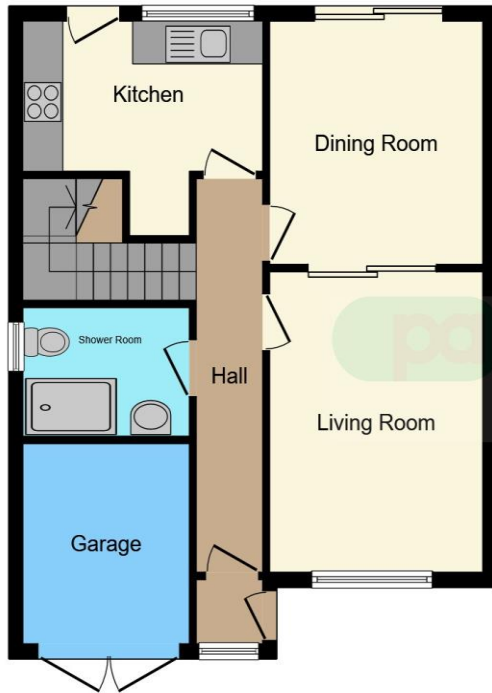
Bathroom

Garage

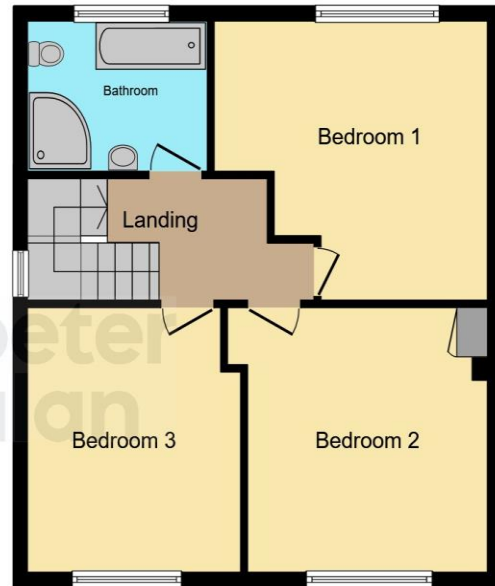
Garden



Floorplan



Ground Floor



First Floor

This floor plan is for illustrative purposes only. It is not drawn to scale. Any measurements, floor areas (including any total floor area), openings and orientation are approximate. No details are guaranteed, they cannot be relied upon for any purpose and they do not form part of any agreement. No liability is taken for any error, omission or misstatement. A party must rely upon its own inspection(s). Powered by www.focalagent.com

Important Information

Note while we endeavour to make our sales details accurate and reliable, if there is any point which is of particular interest to you, please contact the office and we will be pleased to confirm the position for you. We have not personally tested any apparatus, equipment, fixtures, fittings or services and cannot verify they are in working order or fit for their purposes. Nothing in these particulars is intended to indicate that carpets or curtains, furnishings or fittings, electrical goods (whether wired or not), Gas fires or light fittings or any other fixtures not expressly included form part of the property offered for sale. This computer generated Floorplan, if applicable, is intended as a general guide to the layout and design of the property. It is not to scale and should not be relied upon for dimensions. Tenure: We cannot confirm the tenure of the property as we have not had access to the legal documents. The buyer is advised to obtain verification from their solicitor or surveyor.

Peter Alan Limited is registered in England and Wales under company number 2073153, Registered Office is Cumbria House, 16-20 Hockliffe Street, Leighton Buzzard, Bedfordshire, LU7 1GN. VAT Registration Number is 500 2481 05. For activities relating to regulated mortgages and non-investment insurance contracts, Peter Alan Limited is an appointed representative of Connells Limited which is authorised and regulated by the Financial Conduct Authority. Connells Limited's Financial Services Register number is 302221. Most buy-to-let