



Hawksworth Grove, offers in excess of £150,000

- End of Terrace
- Off Road Parking
- Front and Rear Garden
- Close to Local Amenities
- Excellent Transport Links
- EPC Rating: D



 2  1  1



About the property

Presenting a charming end of terrace house for sale, neutrally decorated and ready to welcome its new owners. This property is an ideal choice for first-time buyers, investors, or families looking for a comfortable and convenient place to call home.

The property boasts two double bedrooms, assuring plenty of space for all residents. The bedrooms are complemented by a well-proportioned reception room, featuring large windows that allow ample natural light to fill the space. The reception room also provides access to a delightful garden, offering an excellent spot for relaxation or outdoor entertaining.

Those who enjoy cooking will appreciate the kitchen, which benefits from a generous amount of natural light. This kitchen could become the heart of your home, where meals are prepared and memories are made.

The house comes with a unique feature of parking, making the property particularly appealing for those who drive. In addition, the garden adds a touch of tranquillity and provides a safe space for children to play or for adults to unwind.

Located in an area with excellent public transport links, nearby schools, local amenities and parks, the property ensures that everything you need is always within reach. Whether you're commuting, taking the children to school, or just enjoying a day out, this location makes life easier.



Accommodation

Keys Will Be Left

Living Room

11' 10" max x 17' 8" (3.61m max x 5.38m)

Kitchen

11' 10" x 6' 11" (3.61m x 2.11m)

Landing

Bedroom One

13' 2" x 11' 11" max (4.01m x 3.63m max)

Bedroom Two

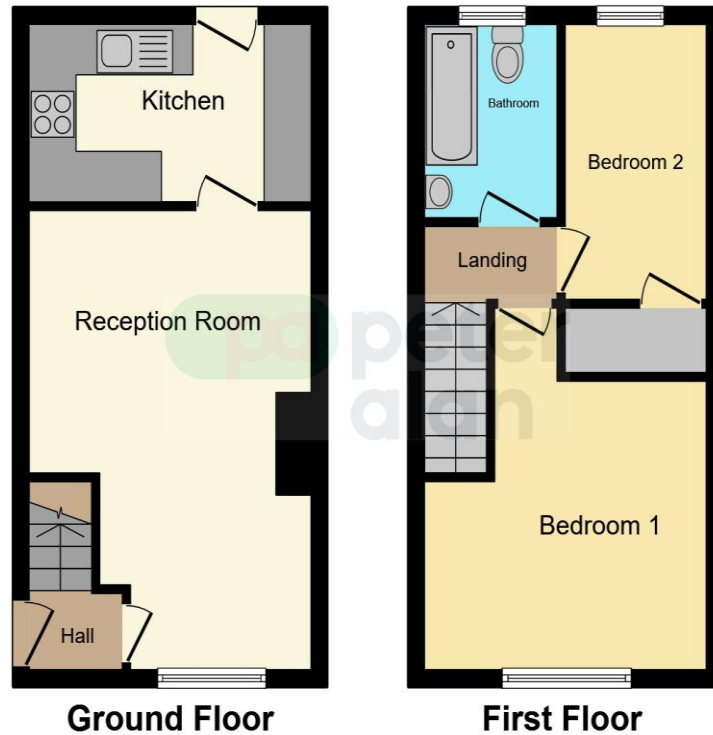
11' 5" x 6' 9" (3.48m x 2.06m)

Bathroom

01633 221892

newport@peteralan.co.uk

Floorplan



This floor plan is for illustrative purposes only. It is not drawn to scale. Any measurements, floor areas (including any total floor area), openings and orientation are approximate. No details are guaranteed, they cannot be relied upon for any purpose and they do not form part of any agreement. No liability is taken for any error, omission or misstatement. A party must rely upon its own inspection(s). Powered by www.focalagent.com

Important Information

Note while we endeavour to make our sales details accurate and reliable, if there is any point which is of particular interest to you, please contact the office and we will be pleased to confirm the position for you. We have not personally tested any apparatus, equipment, fixtures, fittings or services and cannot verify they are in working order or fit for their purposes. Nothing in these particulars is intended to indicate that carpets or curtains, furnishings or fittings, electrical goods (whether wired or not). Gas fires or light fittings or any other fixtures not expressly included form part of the property offered for sale. This computer generated Floorplan, if applicable, is intended as a general guide to the layout and design of the property. It is not to scale and should not be relied upon for dimensions. Tenure: We cannot confirm the tenure of the property as we have not had access to the legal documents. The buyer is advised to obtain verification from their solicitor or surveyor.

Peter Alan Limited is registered in England and Wales under company number 2073153, Registered Office is Cumbria House, 16-20 Hockliffe Street, Leighton Buzzard, Bedfordshire, LU7 1GN. VAT Registration Number is 500 2481 05. For activities relating to regulated mortgages and non-investment insurance contracts, Peter Alan Limited is an appointed representative of Connells Limited which is authorised and regulated by the Financial Conduct Authority. Connells Limited's Financial Services Register number is 302221. Most buy-to-let

pa peter
alan