



## Bessemer Drive, offers in excess of £200,000

- Spacious Coach House
- Front Garden
- Garage with Internal Access
- Two Double Bedrooms
- Sought After Area
- Council Tax Band C
- EPC Rating: C





 peter  
alan

## About the property

GUIDE PRICE 200K - 210K

This charming coach house is currently on the market for sale. The property is neutrally decorated and presents a blank canvas for the new owners to make their mark. It's a maisonette with a difference, boasting unique features such as internal access to the garage, not often seen in similar properties.

The property comes with two bedrooms, one bathroom, one reception room, and a kitchen. The master bedroom and the second bedroom, both doubles, are bathed in natural light, creating an inviting and tranquil space. The bathroom is equipped with a heated towel rail, adding a touch of luxury and convenience.

The kitchen, flooded with natural light, is fitted with modern appliances, ready for the new occupants to cook up a storm. The reception room is spacious, featuring large windows, a garden view, and a Juliet Balcony, perfect for entertaining or simply relaxing with a book.



## Accommodation

### Entrance Hallway

### Living Room

10' x 19' 6" ( 3.05m x 5.94m )

### Kitchen

9' 8" x 10' 1" ( 2.95m x 3.07m )

### Bedroom One

9' 7" x 13' 9" ( 2.92m x 4.19m )

### Bedroom Two

9' 1" x 9' 9" ( 2.77m x 2.97m )

### Bathroom

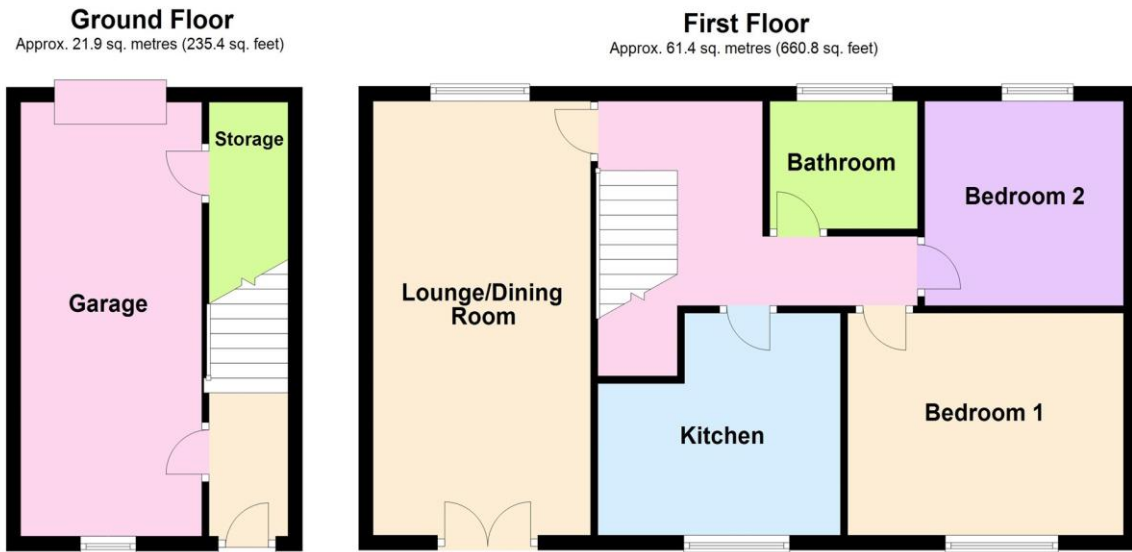
### Garage

19' 3" x 10' 4" ( 5.87m x 3.15m )

01633 221892

newport@peteralan.co.uk

## Floorplan



Total area: approx. 83.3 sq. metres (896.2 sq. feet)

This is inaccurate. For visual pleasure only  
Plan produced using PlanUp.

## Important Information

Note while we endeavour to make our sales details accurate and reliable, if there is any point which is of particular interest to you, please contact the office and we will be pleased to confirm the position for you. We have not personally tested any apparatus, equipment, fixtures, fittings or services and cannot verify they are in working order or fit for their purposes. Nothing in these particulars is intended to indicate that carpets or curtains, furnishings or fittings, electrical goods (whether wired or not). Gas fires or light fittings or any other fixtures not expressly included form part of the property offered for sale. This computer generated Floorplan, if applicable, is intended as a general guide to the layout and design of the property. It is not to scale and should not be relied upon for dimensions. Tenure: We cannot confirm the tenure of the property as we have not had access to the legal documents. The buyer is advised to obtain verification from their solicitor or surveyor.

Peter Alan Limited is registered in England and Wales under company number 2073153, Registered Office is Cumbria House, 16-20 Hockliffe Street, Leighton Buzzard, Bedfordshire, LU7 1GN. VAT Registration Number is 500 2481 05. For activities relating to regulated mortgages and non-investment insurance contracts, Peter Alan Limited is an appointed representative of Connells Limited which is authorised and regulated by the Financial Conduct Authority. Connells Limited's Financial Services Register number is 302221. Most buy-to-let

