



Park View, Offers in excess of £235,000

- No Onwards Chain
- Off Road Parking
- Garage
- Sought After Area
- Close to Local Amenities
- Council Tax Band E
- EPC Rating: E



 3  1  1

 **peter
alan**

01633 221892
newport@peteralan.co.uk



About the property

Welcome to this charming 3-bedroom, semi-detached property that's just waiting for a little love and modernising. It's a diamond in the rough, perfect for families, couples, or sharers who are seeking a home to imprint their unique style on.

As you step inside, you'll find a cosy reception room filled with natural light, thanks to the large windows. It's the perfect spot to unwind after a long day. The house also boasts a kitchen offering a great source of natural light, ideal for those who enjoy cooking in a bright and airy space.

Upstairs, the property offers three generously-sized bedrooms. The master bedroom is a restful sanctuary, while the two additional double bedrooms provide plenty of space for family, guests, or even a home office.

When it comes to outdoor space, this property truly shines. There's a lovely garden waiting to become your green haven, a garage for your car or storage needs, and additional parking available.

Located in a vibrant community with excellent public transport links, this home is surrounded by nearby schools, local amenities, and green spaces. You're never far from all the essentials and leisure activities, with nearby parks adding to the appeal.

All in all, this property is a fantastic opportunity to create your dream home in a thriving and friendly community. Don't wait too long, this gem won't stay on the market for long!



Accommodation

Entrance Hallway

Living Room

8' 11" x 13' 6" (2.72m x 4.11m)

Kitchen

8' 10" x 10' (2.69m x 3.05m)

Shower

Bedroom One

13' 11" x 11' 9" (4.24m x 3.58m)

Bedroom Two

8' 11" x 13' 6" (2.72m x 4.11m)

Bedroom Three

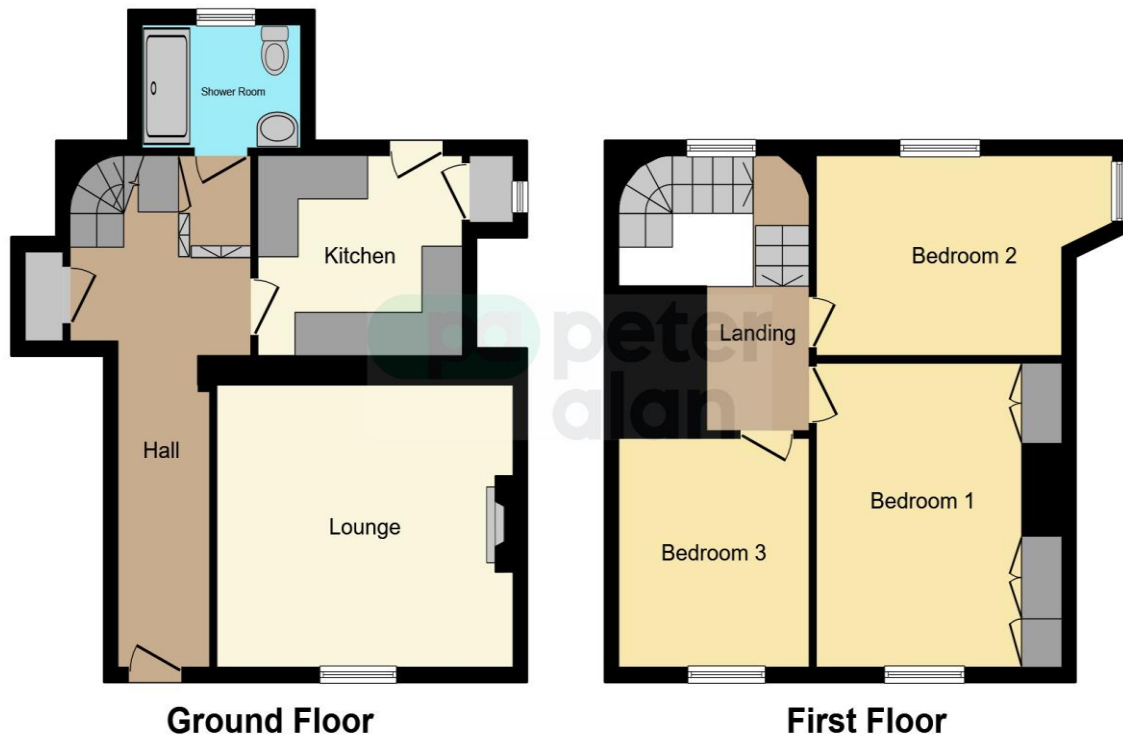
10' 3" x 8' 6" (3.12m x 2.59m)

Outside

01633 221892

newport@peteralan.co.uk

Floorplan



This floor plan is for illustrative purposes only. It is not drawn to scale. Any measurements, floor areas (including any total floor area), openings and orientation are approximate. No details are guaranteed, they cannot be relied upon for any purpose and they do not form part of any agreement. No liability is taken for any error, omission or misstatement. A party must rely upon its own inspection(s). Powered by www.focalagent.com



Important Information

Note while we endeavour to make our sales details accurate and reliable, if there is any point which is of particular interest to you, please contact the office and we will be pleased to confirm the position for you. We have not personally tested any apparatus, equipment, fixtures, fittings or services and cannot verify they are in working order or fit for their purposes. Nothing in these particulars is intended to indicate that carpets or curtains, furnishings or fittings, electrical goods (whether wired or not). Gas fires or light fittings or any other fixtures not expressly included form part of the property offered for sale. This computer generated Floorplan, if applicable, is intended as a general guide to the layout and design of the property. It is not to scale and should not be relied upon for dimensions. Tenure: We cannot confirm the tenure of the property as we have not had access to the legal documents. The buyer is advised to obtain verification from their solicitor or surveyor.

Peter Alan Limited is registered in England and Wales under company number 2073153, Registered Office is Cumbria House, 16-20 Hockliffe Street, Leighton Buzzard, Bedfordshire, LU7 1GN. VAT Registration Number is 500 2481 05. For activities relating to regulated mortgages and non-investment insurance contracts, Peter Alan Limited is an appointed representative of Connells Limited which is authorised and regulated by the Financial Conduct Authority. Connells Limited's Financial Services Register number is 302221. Most buy-to-let