



Crescent Road, offers over £225,000

- Off Road Parking and Garage
- Super Spacious Family Home
- Three/ Four Bedrooms
- Large Rear Garden
- Close to Local Amenities
- Council Tax band C
- EPC Rating: D



3 1 3



About the property

A neutrally decorated, end of terrace property, boasting three/four bedrooms, one bathroom, multiple reception rooms and kitchen. This home is perfect for families and couples alike, seeking an idyllic living space in a vibrant community.

The property's unique features include high ceilings that lend a grandeur to the entire home. The open-plan layout in the kitchen and first reception room, facilitates a seamless flow of space, making it an inviting area for socialising and relaxation.

The kitchen is a open-plan space with dining facilities, perfect for hosting dinners and family gatherings. The three reception rooms are well-lit, two with views of the garden, one even providing direct access to the outdoor space. The third reception room could potentially be transformed into a fourth bedroom, should the need arise.

The property has three bedrooms in total. The master bedroom and the second bedroom are both bright and spacious, benefiting from plenty of natural light, while the third bedroom is a comfortable single room. The bathroom is equipped with a walk-in shower, adding a contemporary touch to the space.

Externally, the property features a garage and parking facilities, adding to its convenience. A beautiful garden presents a lovely view, extending the living space outdoors and offering a serene spot for relaxation.



Accommodation

Entrance Hallway

17' 1" x 22' 6" (5.21m x 6.86m)

Reception Room/ Bedroom

Shower Room

14' 2" x 10' 6" (4.32m x 3.20m)

Reception Room

12' 9" x 12' 1" (3.89m x 3.68m)

First Floor Landing

Master Bedroom

12' 7" x 11' 5" (3.84m x 3.48m)

Bedroom Two

10' 3" x 8' 8" (3.12m x 2.64m)

Bedroom Three

7' 9" x 8' 8" (2.36m x 2.64m)

Wc

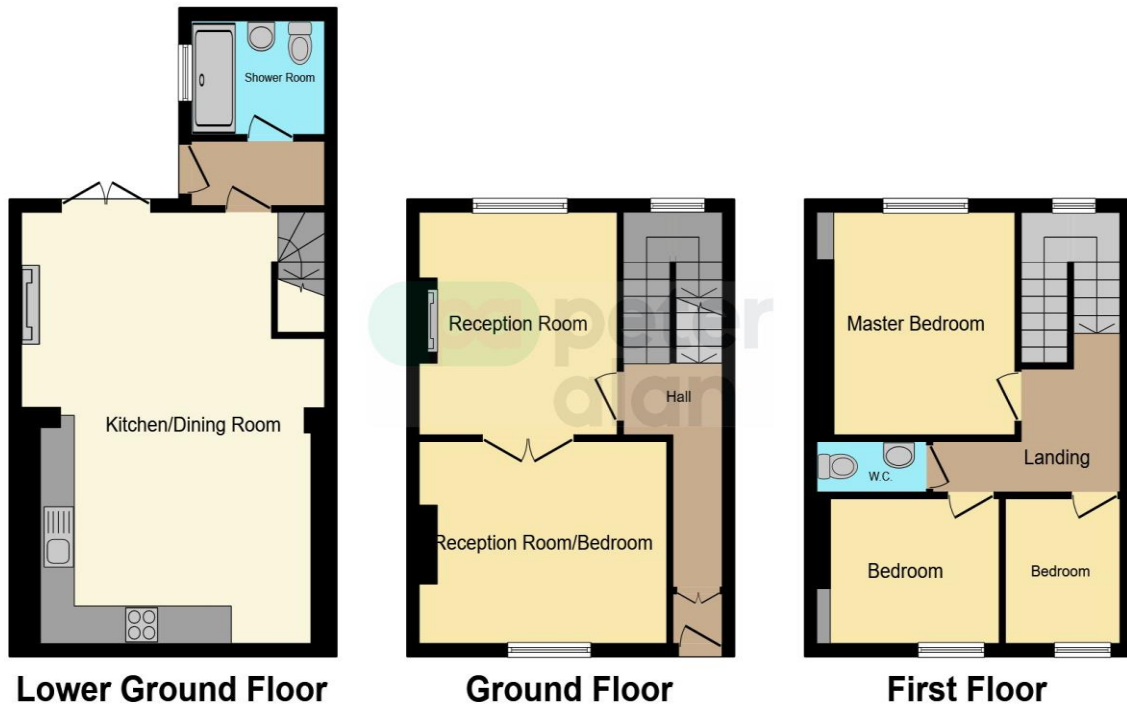
Lower Ground Floor

Open Plan Kitchen Area

01633 221892

newport@peteralan.co.uk

Floorplan



This floor plan is for illustrative purposes only. It is not drawn to scale. Any measurements, floor areas (including any total floor area), openings and orientation are approximate. No details are guaranteed, they cannot be relied upon for any purpose and they do not form part of any agreement. No liability is taken for any error, omission or misstatement. A party must rely upon its own inspection(s). Powered by www.focalagent.com

Important Information

Note while we endeavour to make our sales details accurate and reliable, if there is any point which is of particular interest to you, please contact the office and we will be pleased to confirm the position for you. We have not personally tested any apparatus, equipment, fixtures, fittings or services and cannot verify they are in working order or fit for their purposes. Nothing in these particulars is intended to indicate that carpets or curtains, furnishings or fittings, electrical goods (whether wired or not). Gas fires or light fittings or any other fixtures not expressly included form part of the property offered for sale. This computer generated Floorplan, if applicable, is intended as a general guide to the layout and design of the property. It is not to scale and should not be relied upon for dimensions. Tenure: We cannot confirm the tenure of the property as we have not had access to the legal documents. The buyer is advised to obtain verification from their solicitor or surveyor.

Peter Alan Limited is registered in England and Wales under company number 2073153, Registered Office is Cumbria House, 16-20 Hockliffe Street, Leighton Buzzard, Bedfordshire, LU7 1GN. VAT Registration Number is 500 2481 05. For activities relating to regulated mortgages and non-investment insurance contracts, Peter Alan Limited is an appointed representative of Connells Limited which is authorised and regulated by the Financial Conduct Authority. Connells Limited's Financial Services Register number is 302221. Most buy-to-let

