



Cefn Adda Court, offers in excess of £220,000

- Well presented
- Three storey townhouse
- Three bedrooms (principal bedroom with ensuite)
- Driveway
- Garden
- No onward chain!
- Council Tax Band - C
- EPC Rating: B



 3  2  1



About the property

An exceptional opportunity awaits to own this well presented three-bedroom, three-story townhouse nestled in a highly convenient residential area of Newport. Boasting proximity to various facilities, amenities, public transport links, and main road networks, it's perfectly suited for commuters heading to Cardiff, Bristol, and beyond. The ground floor hosts an entrance porch, lounge, inner hallway, cloakroom/WC, and kitchen/dining room, while the first floor features two bedrooms and a family bathroom. On the second floor, you'll find the principal bedroom with an ensuite shower room. The property is complemented by a front garden with off-road parking and an enclosed rear garden. Plus, it's available with no onward chain!



Accommodation

Entrance Porch

Enter via opaque double glazed door to porch. Radiator. Wood laminate flooring. Open to lounge.

Lounge

11' 11" x 14' 8" (3.63m x 4.47m)
UPVC double glazed window to front elevation. Wood laminate flooring. Radiator. Door to inner hallway.

Inner Hallway

Doors to cloakroom/WC and kitchen. Stairs to first floor

Cloakroom/wc

Comprising close coupled WC and pedestal wash hand basin. Radiator.

Kitchen/dining Room

11' 10" x 8' 10" max (3.61m x 2.69m max)
Fitted with a range of base units with laminate worktops incorporating a stainless steel sink bowl and

drainer. Plumbing for washing machine. Wall cupboards. Integrated electric oven and gas hob with cooker hood over. Wall mounted Ideal gas boiler. UPVC double glazed window to rear elevation. Radiator. UPVC double glazed french doors to rear garden.

First Floor Landing

Doors to bathroom, bedrooms two and three. Radiator. Stairs to second floor.

Bedroom Two

12' x 10' 5" (3.66m x 3.17m)
Two UPVC double glazed window to front elevation. Radiator.

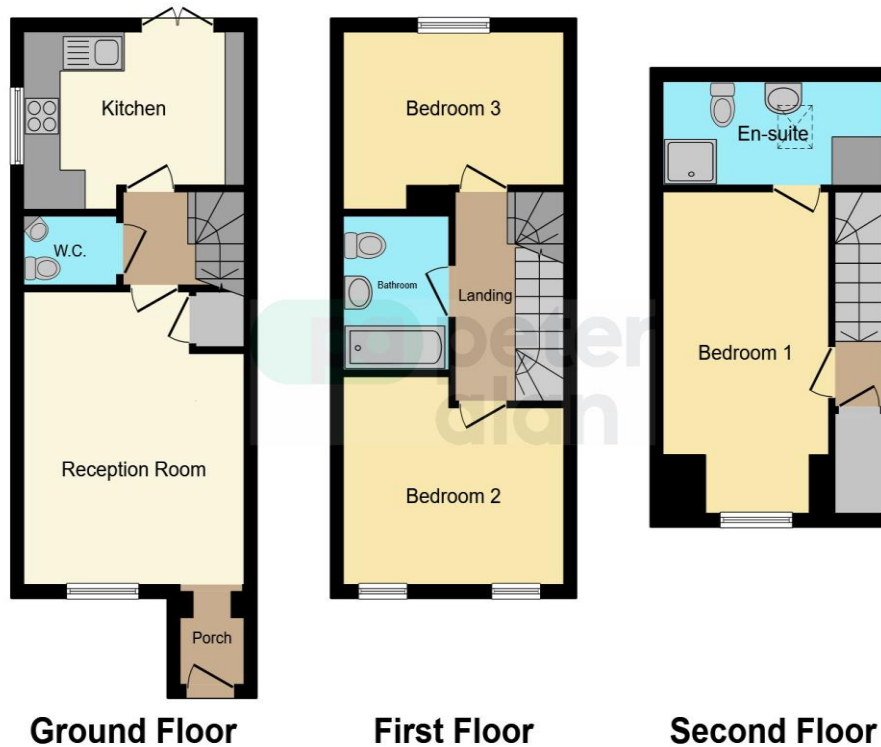
Bedroom Three

11' 11" x 8' 10" (3.63m x 2.69m)
UPVC double glazed window to rear elevation. Radiator.

Family Bathroom

Comprising bath, pedestal wash hand basin and close coupled WC. Radiator. Tiled splashbacks.

Floorplan



This floor plan is for illustrative purposes only. It is not drawn to scale. Any measurements, floor areas (including any total floor area), openings and orientation are approximate. No details are guaranteed, they cannot be relied upon for any purpose and they do not form part of any agreement. No liability is taken for any error, omission or misstatement. A party must rely upon its own inspection(s). Powered by www.focalagent.com

Important Information

Note while we endeavour to make our sales details accurate and reliable, if there is any point which is of particular interest to you, please contact the office and we will be pleased to confirm the position for you. We have not personally tested any apparatus, equipment, fixtures, fittings or services and cannot verify they are in working order or fit for their purposes. Nothing in these particulars is intended to indicate that carpets or curtains, furnishings or fittings, electrical goods (whether wired or not). Gas fires or light fittings or any other fixtures not expressly included form part of the property offered for sale. This computer generated Floorplan, if applicable, is intended as a general guide to the layout and design of the property. It is not to scale and should not be relied upon for dimensions. Tenure: We cannot confirm the tenure of the property as we have not had access to the legal documents. The buyer is advised to obtain verification from their solicitor or surveyor.

Peter Alan Limited is registered in England and Wales under company number 2073153, Registered Office is Cumbria House, 16-20 Hockliffe Street, Leighton Buzzard, Bedfordshire, LU7 1GN. VAT Registration Number is 500 2481 05. For activities relating to regulated mortgages and non-investment insurance contracts, Peter Alan Limited is an appointed representative of Connells Limited which is authorised and regulated by the Financial Conduct Authority. Connells Limited's Financial Services Register number is 302221. Most buy-to-let