



## Bessemer Drive, £260,000

- Garage and Off Road Parking
- Ensuite to Master Bedroom
- Enclosed Rear Garden
- Sought After Area
- Semi Detached Town House
- Council Tax Band E
- EPC Rating: B



 4  2  2



## About the property

Ideally located for a family, this wonderful four bedroom home is just around the corner from the well-regarded Glan Llyn Primary School, as well as Lakeside Play Park. Spytty Retail Park is just a short walk away and offers a great choice of amenities. Whether you need to travel to Newport City Centre, or out of the city, this home offers fantastic road links via the A48 to Junction 24 of the M4, ideal for commuting to Bristol or Cardiff.

The property comprises of; Entrance Hallway, WC, Kitchen Diner, Living Room and Orangery to the ground floor, Three bedrooms and family bathroom to the first and Master Bedroom with ensuite to the second. Secure Low Maintenance Garden to the rear leading to garage and driveway.



## Accommodation

### Entrance Hallway

10' 4" x 22' 6" ( 3.15m x 6.86m )

### Kitchen

### Ensuite

9' 5" x 13' 11" ( 2.87m x 4.24m )

### Wc

### Living/dining Room

16' 3" x 11' 9" ( 4.95m x 3.58m )

### Orangery

13' 10" x 12' 7" ( 4.22m x 3.84m )

### Bedroom 4

6' 7" x 7' 8" ( 2.01m x 2.34m )

### Bedroom 3

9' 3" x 10' 5" ( 2.82m x 3.17m )

### Bedroom 2

9' 2" x 13' 4" ( 2.79m x 4.06m )

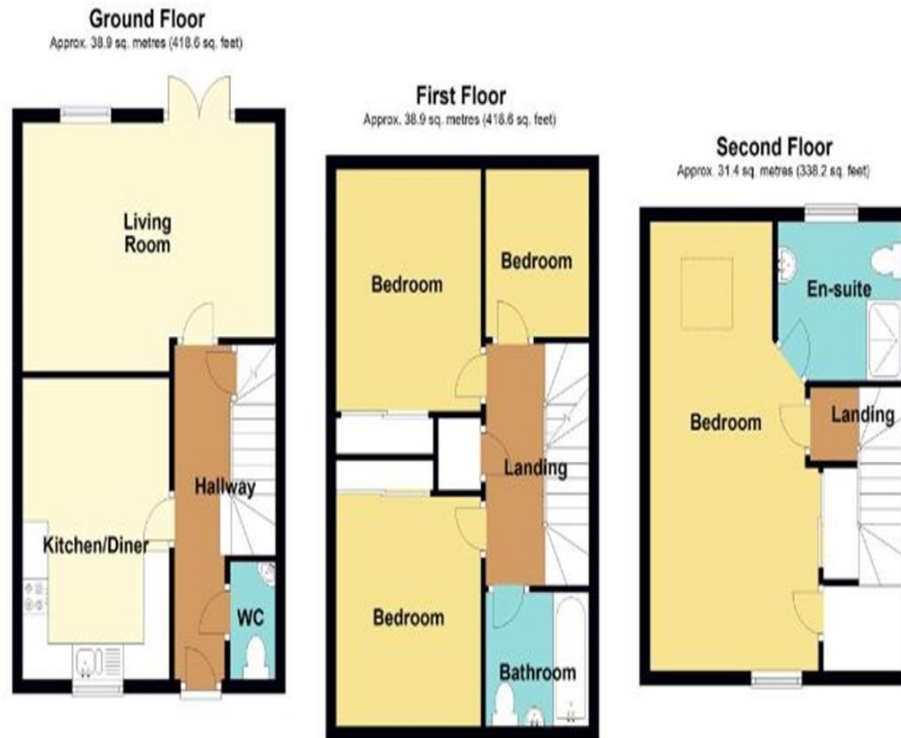
### Bathroom

### Master Bedroom

01633 221892

newport@peteralan.co.uk

## Floorplan



Total area: approx. 109.2 sq. metres (1175.4 sq. feet)

## Important Information

Note while we endeavour to make our sales details accurate and reliable, if there is any point which is of particular interest to you, please contact the office and we will be pleased to confirm the position for you. We have not personally tested any apparatus, equipment, fixtures, fittings or services and cannot verify they are in working order or fit for their purposes. Nothing in these particulars is intended to indicate that carpets or curtains, furnishings or fittings, electrical goods (whether wired or not). Gas fires or light fittings or any other fixtures not expressly included form part of the property offered for sale. This computer generated Floorplan, if applicable, is intended as a general guide to the layout and design of the property. It is not to scale and should not be relied upon for dimensions. Tenure: We cannot confirm the tenure of the property as we have not had access to the legal documents. The buyer is advised to obtain verification from their solicitor or surveyor.

Peter Alan Limited is registered in England and Wales under company number 2073153, Registered Office is Cumbria House, 16-20 Hockliffe Street, Leighton Buzzard, Bedfordshire, LU7 1GN. VAT Registration Number is 500 2481 05. For activities relating to regulated mortgages and non-investment insurance contracts, Peter Alan Limited is an appointed representative of Connells Limited which is authorised and regulated by the Financial Conduct Authority. Connells Limited's Financial Services Register number is 302221. Most buy-to-let

