



## Poplar Road, offers in the region of £150,000

- Off Road Parking
- Short Drive to M4
- Double Bedrooms
- Quiet Cul de Sac
- Close to Local Amenities
- Council Tax Band B
- Cash Only Purchase
- EPC Rating: D



2 1 2

**pa** peter  
alan

01633 221892  
newport@peteralan.co.uk



## About the property

CASH ONLY PURCHASE

A well-presented 2 bedroom mid-terrace family home situated in a convenient location on a large corner plot providing substantial gardens, close to Chepstow Road on the east side of Newport within easy access to all local amenities, schools, shops, supermarkets and of Junction 24 of the M4 making it perfect for commuting.

Call Newport Peter Alan today to book your viewing...



## Accommodation

### Hall

Large master bedroom with uPVC double glazed front and rear windows.

### Living Room

15' 3" x 11' 9" ( 4.65m x 3.58m )  
Spacious double reception room with uPVC double glazed front window, uPVC double glazed and French doors to garden.

### Bedroom Two

15' 3" x 11' ( 4.65m x 3.35m )  
Spacious second bedroom with uPVC double glazed front and rear windows.

### Kitchen

8' 6" x 7' 9" ( 2.59m x 2.36m )  
Attractive fitted wall and base units, roll top work surfaces, tiled surrounds, inset stainless steel drainer sink unit with mixer tap, four ring hob, stainless steel electric oven, plumbing for washing machine, tiled floor, uPVC double glazed rear window.

### Outside

Excellent size parking area for three cars at the front. Attractive lawned rear garden with seating area and pebbled stone border.

### Bathroom

White suite comprising pedestal wash hand basin, low level w.c., Walk in Shower cubicle, fully tiled walls and floor, uPVC double glazed front window.

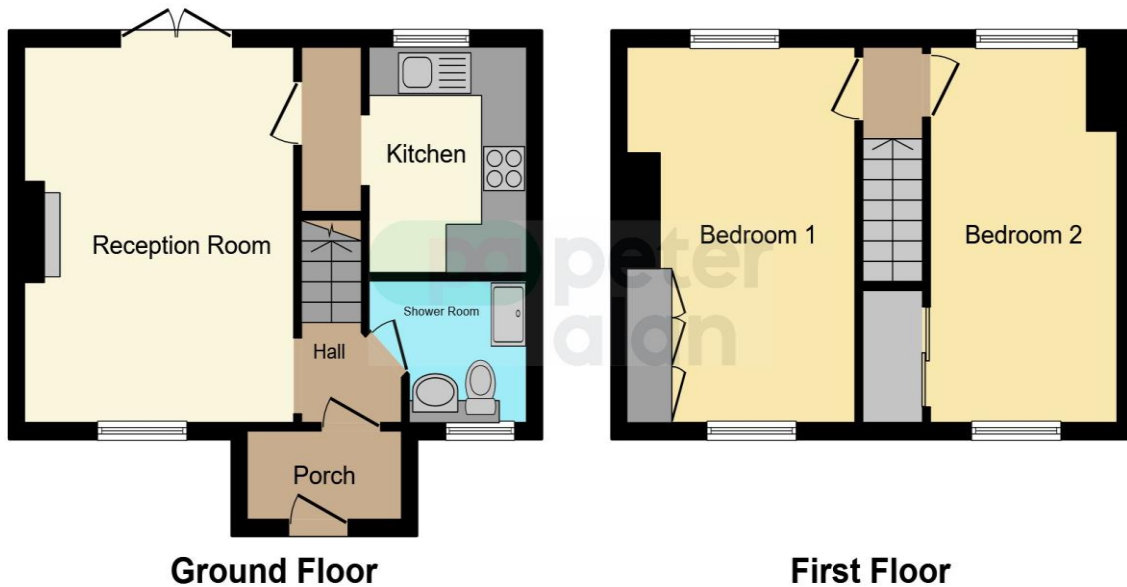
### Bedroom One

15' 3" x 11' 3" ( 4.65m x 3.43m )

01633 221892

newport@peteralan.co.uk

## Floorplan



This floorplan is for illustrative purposes only and is not drawn to scale. Measurements, floor-areas, openings and orientations are approximate. They should not be relied upon for any purpose and do not form any part of an agreement. No liability is taken for any error or mis-statement. All parties must rely on their own inspections.

## Important Information

Note while we endeavour to make our sales details accurate and reliable, if there is any point which is of particular interest to you, please contact the office and we will be pleased to confirm the position for you. We have not personally tested any apparatus, equipment, fixtures, fittings or services and cannot verify they are in working order or fit for their purposes. Nothing in these particulars is intended to indicate that carpets or curtains, furnishings or fittings, electrical goods (whether wired or not). Gas fires or light fittings or any other fixtures not expressly included form part of the property offered for sale. This computer generated Floorplan, if applicable, is intended as a general guide to the layout and design of the property. It is not to scale and should not be relied upon for dimensions. Tenure: We cannot confirm the tenure of the property as we have not had access to the legal documents. The buyer is advised to obtain verification from their solicitor or surveyor.

Peter Alan Limited is registered in England and Wales under company number 2073153, Registered Office is Cumbria House, 16-20 Hockliffe Street, Leighton Buzzard, Bedfordshire, LU7 1GN. VAT Registration Number is 500 2481 05. For activities relating to regulated mortgages and non-investment insurance contracts, Peter Alan Limited is an appointed representative of Connells Limited which is authorised and regulated by the Financial Conduct Authority. Connells Limited's Financial Services Register number is 302221. Most buy-to-let

